

WAAS CH 48839 W26A	APP CRS 262°	Rwy Idg 4007 TDZE 575 Apt Elev 585
--	------------------------	---

RNAV (GPS) RWY 26

CHILTON COUNTY (Ø2A)

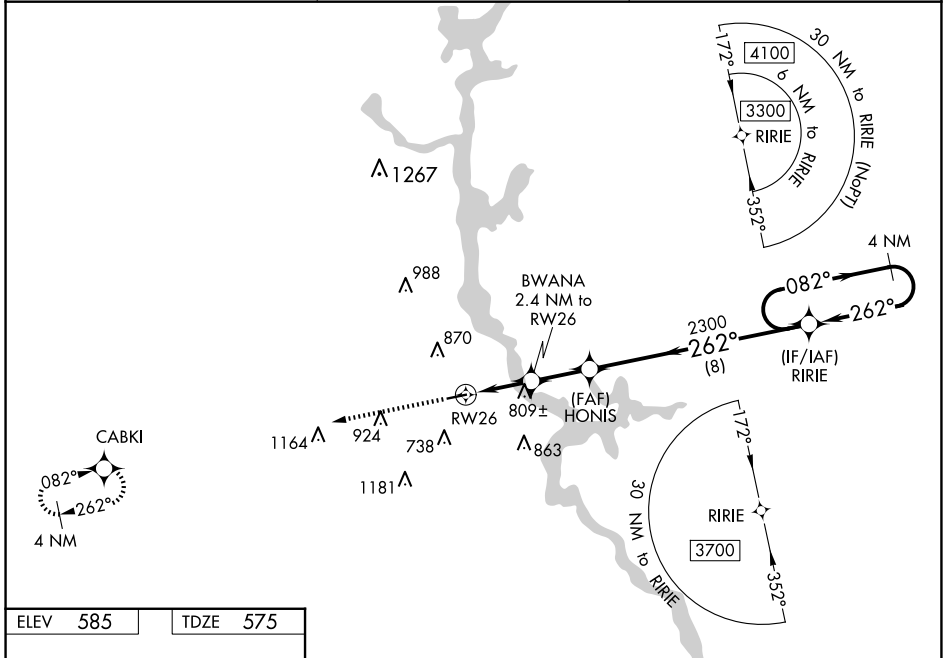
NA DME/DME RNP-0.3 NA. Procedure NA at night. Use Shelby County altimeter setting; when not received, use Merkel Field Sylacauga Muni altimeter setting and increase all MDA 20 feet and LP visibility Cat C/D ½ mile. Helicopter visibility reduction below 1 SM NA.

MISSED APPROACH: Climb to 3000 direct CABKI and hold.

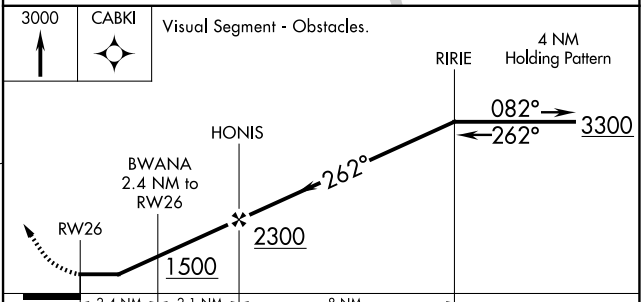
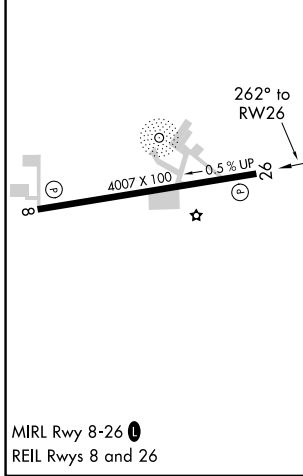
EET ASOS-3
134.325

MONTGOMERY APP CON ★
121.2 269.05

UNICOM
122.8 (CTAF) Ø



ELEV 585	TDZE 575
-----------------	-----------------



CATEGORY	A	B	C	D
LP MDA	1100-1	525 (600-1)	1100-1½	525 (600-1½)
LNAV MDA	1120-1	545 (600-1)	1120-1½	545 (600-1½)
CIRCLING	1260-1	675 (800-1)	1280-2 695 (700-2)	1600-3 1015 (1100-3)

SE-4, 23 JAN 2025 to 20 FEB 2025

SE-4, 23 JAN 2025 to 20 FEB 2025