

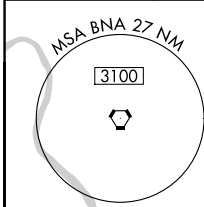
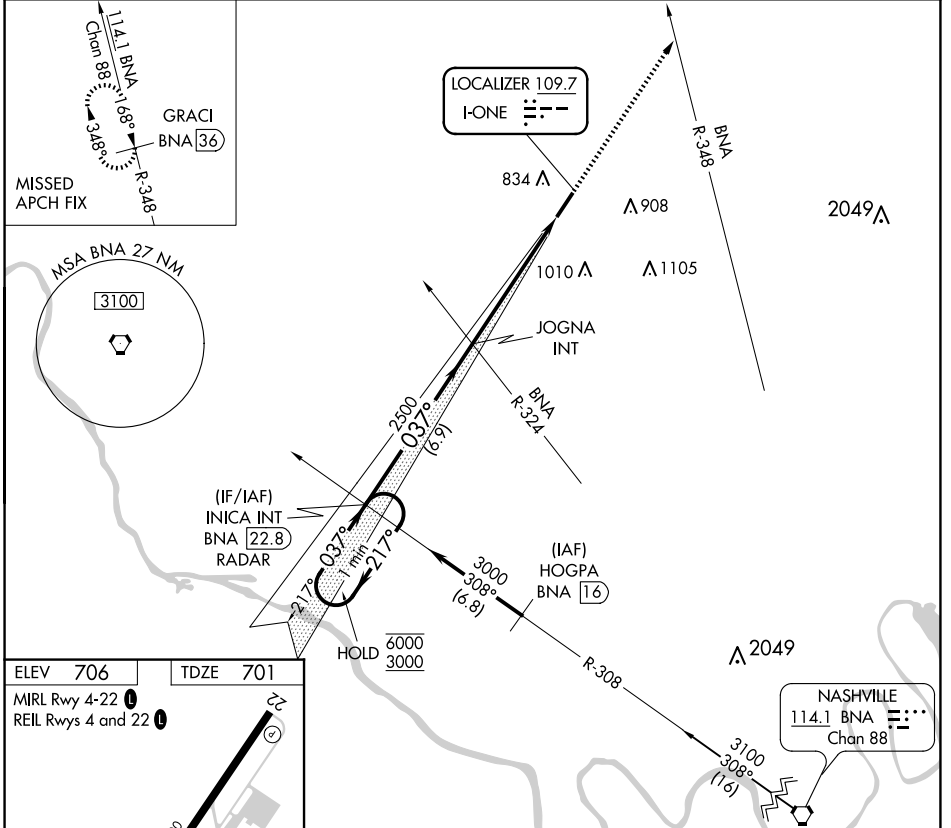
LOC RWY 4

SPRINGFIELD ROBERTSON COUNTY (M91)

LOC I-ONE 109.7	APP CRS 037°	Rwy Idg 5505 TDZE 701 Apt Elev 706
---------------------------	------------------------	---

NA Rwy 4 helicopter visibility reduction below 3/4 SM NA. MISSED APPROACH: Climb to 3100 on heading 037° and BNA VORTAC R-348, to GRACI/BNA 36 DME and hold.

AWOS-3 120.675	NASHVILLE APP CON 119.35 372.0	UNICOM 123.0 (CTAF) 0
--------------------------	--	---------------------------------



ELEV 706	TDZE 701
MIRL Rwy 4-22 0	REIL Rws 4 and 22 0

FAF to MAP 5.5 NM					
Knots	60	90	120	150	180
Min:Sec	5:30	3:40	2:45	2:12	1:50

6000 3000 ←217° 037°→ 037°	INICA INT BNA 22.8 RADAR	3100 ↑ JOGNA INT	hdg 037°	BNA R-348	GRACI BNA 36
	2500 3.00° TCH 40 ←6.9 NM 5.5 NM				
CATEGORY	A	B	C	D	
S-4	1180-1 479 (500-1)		1180-1 ³ / ₄ 479 (500-1 ³ / ₄)		
C CIRCLING	1180-1 474 (500-1)		1360-1 ³ / ₄ 654 (700-1 ³ / ₄)	1540-2 ³ / ₄ 834 (900-2 ³ / ₄)	

LOC RWY 4

SE-1, 23 JAN 2025 to 20 FEB 2025

SE-1, 23 JAN 2025 to 20 FEB 2025