

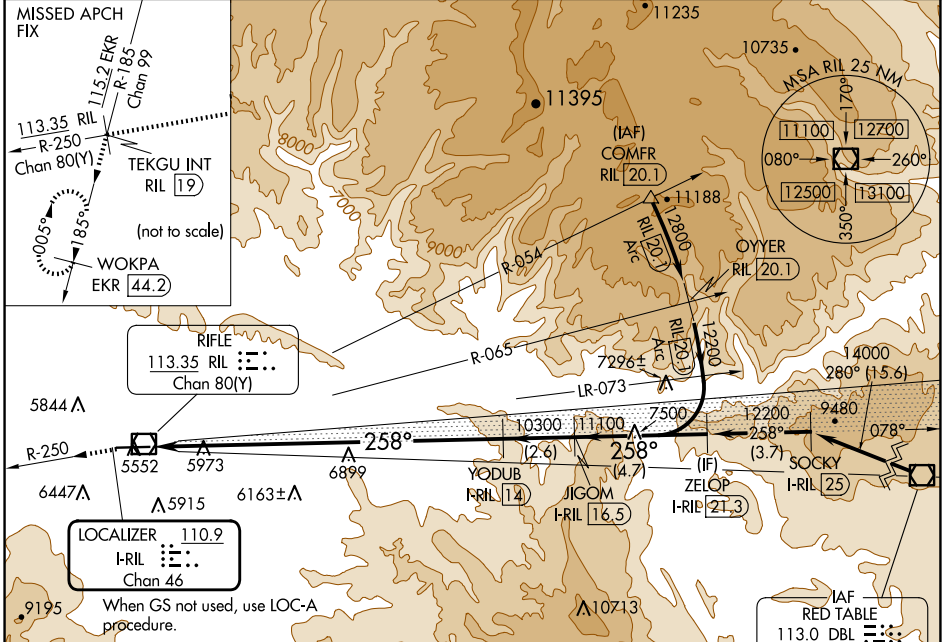
LOC/DME I-RIL <b>110.9</b> Chan 46	APP CRS <b>258°</b>	Rwy Idg TDZE Apt Elev	<b>7000</b> <b>5537</b> <b>5537</b>
--	------------------------	-----------------------------	---

# ILS RWY 26

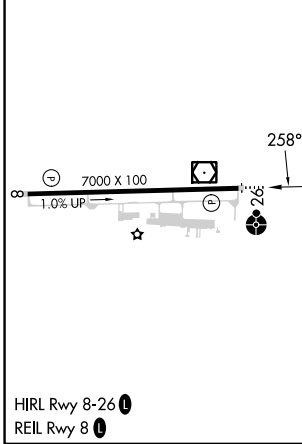
RIFLE GARFIELD COUNTY (R.I.L.)

DME required.	ODALS .....	MISSED APPROACH: Climb to 14000 on RIL VOR/DME R-250 to TEKGU INT/RIL 19 DME and on EKR VOR/DME R-185 to WOKPA/EKR 44.2 DME and hold. Missed approach requires a minimum climb of 340 feet per NM to 10300; if unable to meet climb gradient, see LOC-A.
<p>▼ ▲ ☼ -14°C</p> <p>Rwy 26 helicopter visibility reduction below 3/4 SM NA.</p>		

ASOS <b>135.275</b>	DENVER CENTER <b>134.95 327.075</b>	UNICOM <b>122.8 (CTAF) 0</b>
------------------------	--	---------------------------------



ELEV 5537	TDZE 5537
-----------	-----------



14000	TEKGU INT	EKR R-185	WOKPA EKR 44.2	Use I-RIL DME when on localizer course.	ZELOP I-RIL 21.3
RIL R-250				YODUB I-RIL 14	JIGOM I-RIL 16.5
				10300	11100
				10300	12200
				12.6 NM	2.6 NM
					4.7 NM
CATEGORY	A	B	C	D	
S-ILS 26		6800-4	1263 (1300-4)		

SW-1, 23 JAN 2025 to 20 FEB 2025

SW-1, 23 JAN 2025 to 20 FEB 2025