

| | | |
|---|------------------------|--|
| VOR/DME RIL 113.35 Chan 80(Y) | APP CRS 126° | Rwy Idg TDZE Apt Elev N/A N/A 5537 |
|---|------------------------|--|

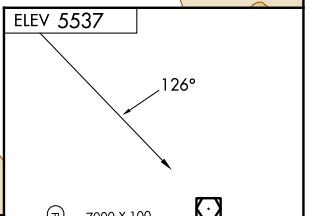
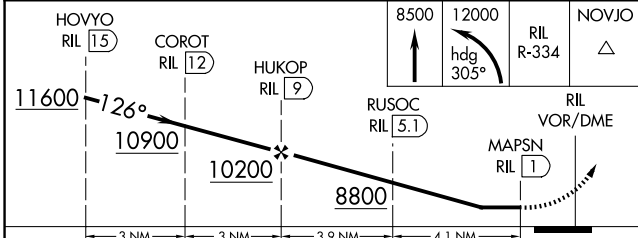
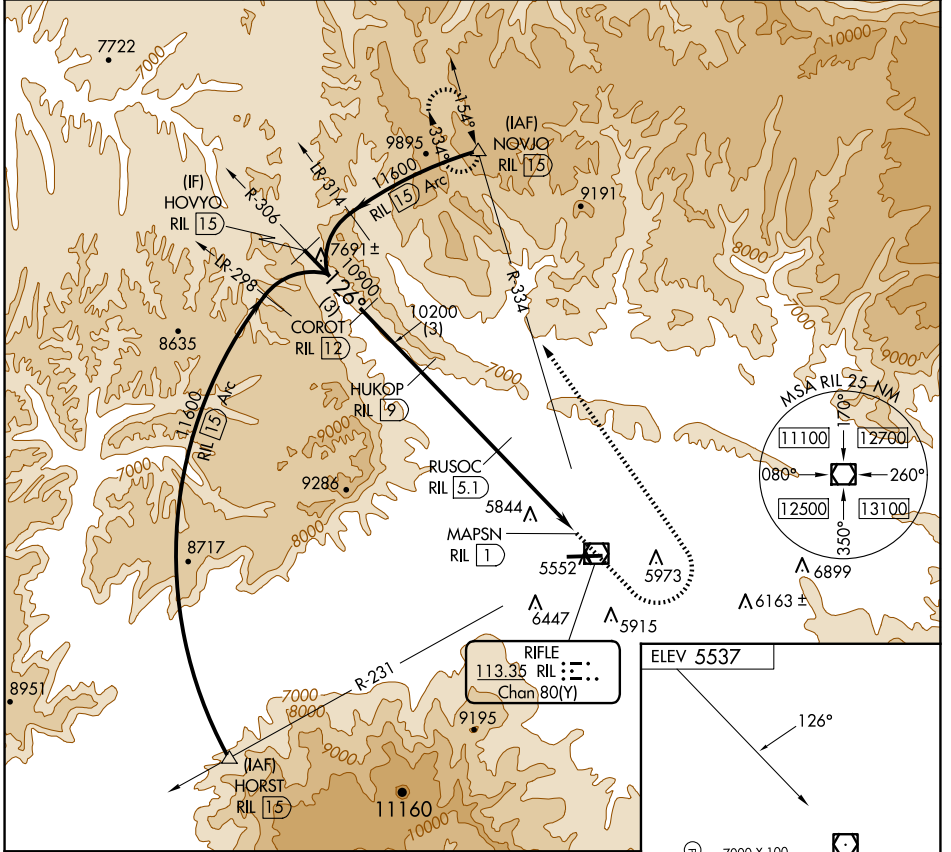
VOR/DME-C

RIFLE GARFIELD COUNTY (RIL)

⚠ Circling NA south of Rwy 8-26 at night.
⚠ -14°C

MISSED APPROACH: Climb to 8500 then climbing left turn 12000 on heading 305° and RIL VOR/DME R-334 to NOVJO/15 DME and hold, continue climb-in-hold to 12400.

| | | |
|------------------------|--|---------------------------------|
| ASOS 135.275 | DENVER CENTER 134.95 327.075 | UNICOM 122.8 (CTAF) 0 |
|------------------------|--|---------------------------------|



| CATEGORY | A | B | C | D |
|-------------------|---------------------------|---------------------------|-------------------------|----|
| C CIRCLING | 7360-1¼ 1823 (1900-1¼) | 7360-1½ 1823 (1900-1½) | 7360-3 1823 (1900-3) | NA |

ELEV 5537

126°

7000 X 100

1.0% UP

NOVJO

RIL R-334

RIL VOR/DME

MAPSN RIL 1

RUSOC RIL 5.1

HUKOP RIL 9

COROT RIL 12

HOVYO RIL 15

HIRL Rwy 8-26 0

REIL Rwy 8 0

SW-1, 23 JAN 2025 to 20 FEB 2025

SW-1, 23 JAN 2025 to 20 FEB 2025