

APP CRS 052°	Rwy Idg 3201 TDZE 84 Apt Elev 85
------------------------	---

RNAV (GPS) RWY 5

ST GEORGE (6J2)

▼ DME/DME RNP-0.3 NA. Helicopter visibility reduction below 1 SM NA. Use Summerville altimeter setting; when not received, use Charleston altimeter setting and increase all MDAs 40 feet, increase LNAV and Circling Cat C visibility ¼ mile, increase LNAV and Circling Cat D visibility ½ mile. Procedure NA at night.

▲ NA

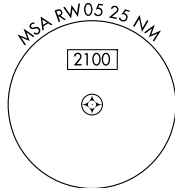
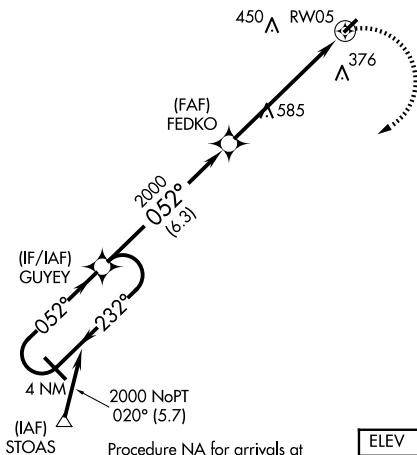
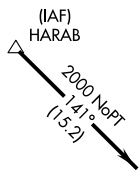
MISSED APPROACH: Climbing right turn to 2000 direct GUYEY and hold.

CHARLESTON APP CON
120.7 306.925

UNICOM
122.8 (CTAF)

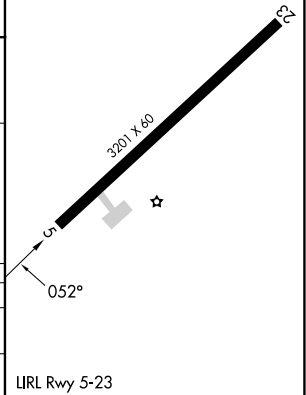
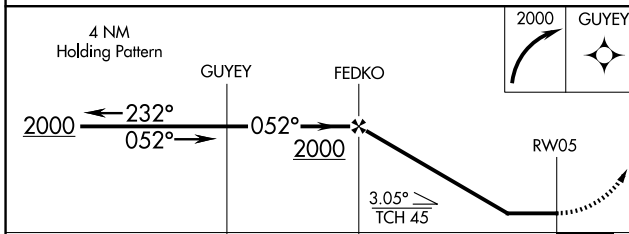
A 648

Procedure NA for arrivals at HARAB on V18 Northwest bound.



Procedure NA for arrivals at STOAS on V3 Southbound.

ELEV 85	TDZE 84
---------	---------



CATEGORY	A	B	C	D
LNAV MDA	940-1¼	856 (900-1¼)	940-2½ 856 (900-2½)	940-2¾ 856 (900-2¾)
CIRCLING	940-1¼	855 (900-1¼)	940-2½ 855 (900-2½)	940-2¾ 855 (900-2¾)

ILRL Rwy 5-23

SE-2, 23 JAN 2025 to 20 FEB 2025

SE-2, 23 JAN 2025 to 20 FEB 2025