

WAAS CH <b>82526</b> <b>W18A</b>	APP CRS <b>178°</b>	Rwy Idg TDZE Apt Elev	<b>4335</b> <b>452</b> <b>452</b>
--	------------------------	-----------------------------	---

# RNAV (GPS) RWY 18

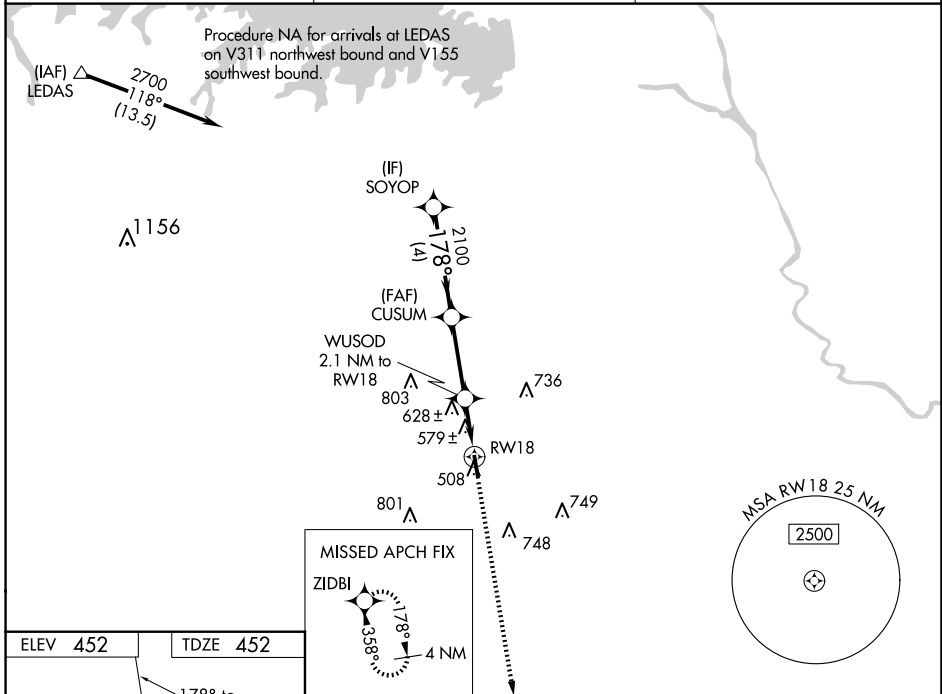
LEXINGTON COUNTY (6J0)

RNP APCH.

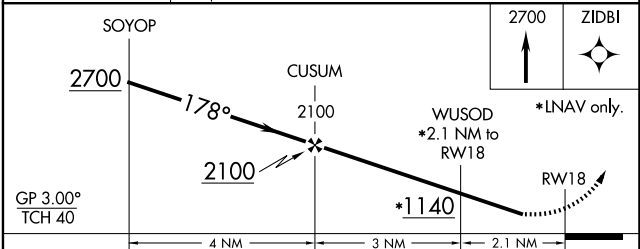
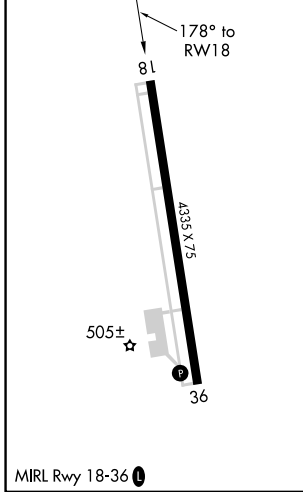
**▼** Baro-VNAV NA. Rwy 18 helicopter visibility reduction below 3/4 SM NA. Use Columbia Metro altimeter setting; when not received use Jim Hamilton L B Owens altimeter setting and increase all DA 19 feet, all MDA 20 feet and increase LPV and LNAV/VNAV all Cats visibility 1/8 mile.

**MISSED APPROACH:**  
Climb to 2700 direct ZIDBI and hold.

CAE ASOS <b>120.15</b>	COLUMBIA APP CON <b>124.15 338.2</b>	UNICOM <b>123.0 (CTAF) 0</b>
---------------------------	---	---------------------------------



ELEV 452	TDZE 452
----------	----------



CATEGORY	A	B	C	D
LPV DA	757-1	305 (400-1)		NA
LNAV/VNAV DA	797-1 1/8	345 (400-1 1/8)		NA
LNAV MDA	940-1	488 (500-1)		NA
CIRCLING	980-1 528 (600-1)	1060-1 608 (700-1)		NA

SE-2, 23 JAN 2025 to 20 FEB 2025

SE-2, 23 JAN 2025 to 20 FEB 2025