

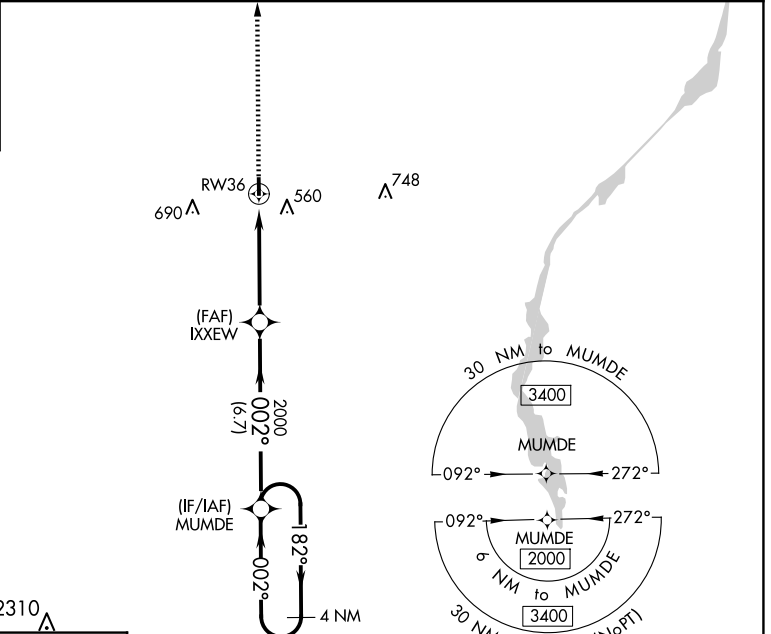
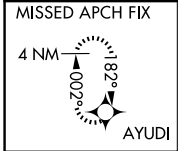
WAAS CH 99535 W36A	APP CRS 002°	Rwy Idg 3197 TDZE 337 Apt Elev 337
--	------------------------	---

RNAV (GPS) RWY 36
OKOLONA MUNI/RICHARD STOVALL FLD (5A4)

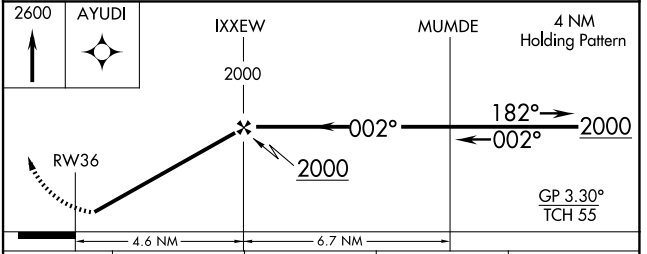
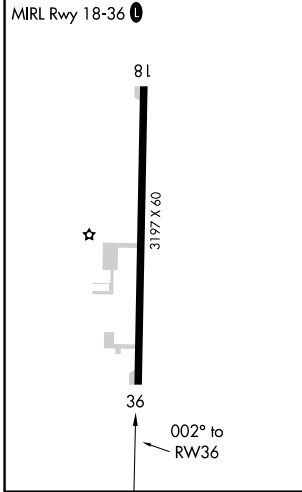
Baro-VNAV NA. DME/DME RNP-0.3 NA. Use Tupelo altimeter setting; when not received, use Columbus Air Force Base altimeter setting and increase all DA 41 feet and all MDA 60 feet; increase LNAV/VNAV all Cats visibility ¼ mile and LNAV Cat C visibility ¼ mile.
Rwy 36 helicopter visibility reduction below ¾ SM NA.

MISSED APPROACH:
Climb to 2600 direct AYUDI and hold.

COLUMBUS APP CON ★ 126.075 229.15	CTAF 122.9
---	----------------------



ELEV 337	TDZE 337
-----------------	-----------------



CATEGORY	A	B	C	D
LPV DA	624-1 287 (300-1)			NA
LNAV/VNAV DA	732-1½ 395 (400-1½)			NA
LNAV MDA	860-1 523 (600-1)	860-1½ 523 (600-1½)		NA
<input checked="" type="checkbox"/> CIRCLING	920-1 583 (600-1)	1080-2¼ 743 (800-2¼)		NA

SC-4, 23 JAN 2025 to 20 FEB 2025

SC-4, 23 JAN 2025 to 20 FEB 2025