

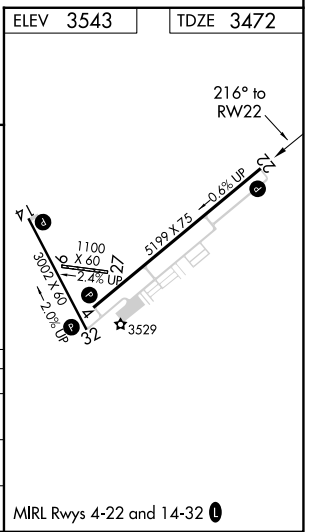
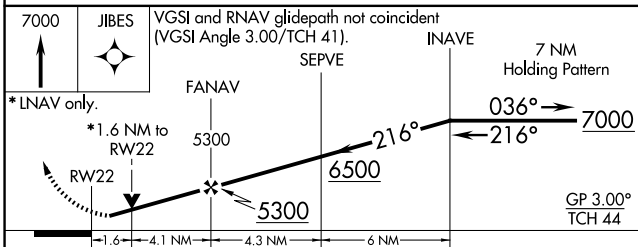
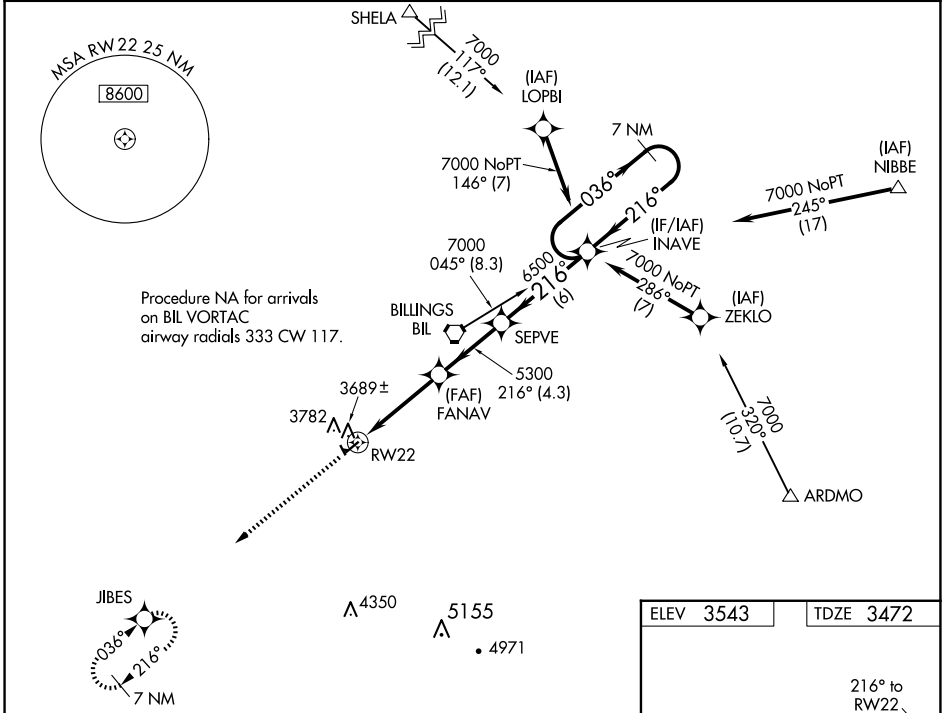
WAAS CH <b>86822</b> <b>W22A</b>	APP CRS <b>216°</b>	Rwy Idg TDZE Apt Elev	<b>5199</b> <b>3472</b> <b>3543</b>
--	------------------------	-----------------------------	---

# RNAV (GPS) RWY 22

LAUREL MUNI (6S8)

RNP APCH.	MISSED APPROACH: Climb to 7000 direct JIBES and hold, continue climb-in-hold to 7000.
<p><b>▼</b> For uncompensated Baro-VNAV systems, LNAV/VNAV NA below -21°C or above 53°C. When local altimeter setting not received, use Billings altimeter setting. Baro-VNAV and VDP NA when using Billings altimeter setting. Rwy 22 helicopter visibility reduction below 3/4 SM NA.</p>	

AWOS-2 <b>135.05</b>	BILLINGS APP CON <b>119.2 120.5 284.6</b>	AUNICOM <b>123.05 (CTAF)</b>
-------------------------	--	---------------------------------



CATEGORY	A	B	C	D
LPV DA	3767-1		295 (300-1)	
LNAV/VNAV DA	3965-1 5/8		493 (500-1 5/8)	
LNAV MDA	4000-1	528 (500-1)	4000-1 5/8	528 (500-1 5/8)

NW-1, 23 JAN 2025 to 20 FEB 2025

NW-1, 23 JAN 2025 to 20 FEB 2025