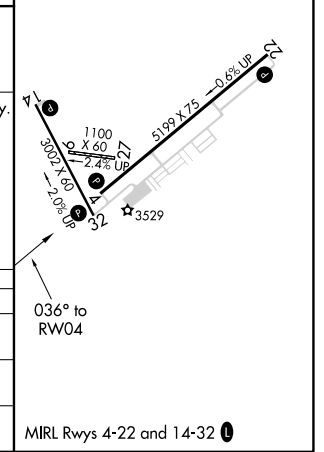
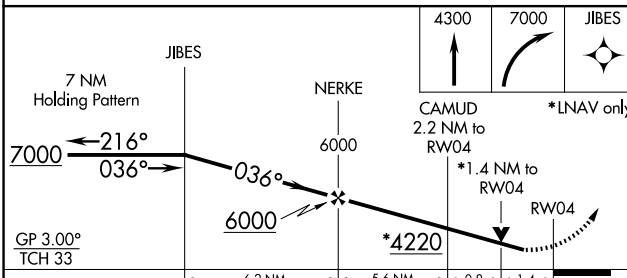
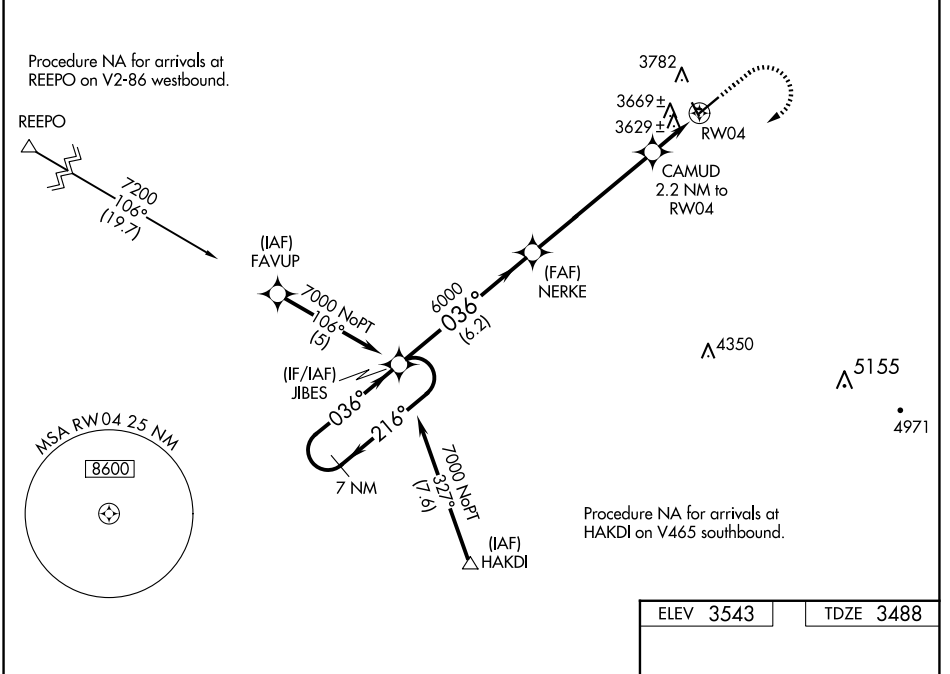


WAAS CH <b>70422</b> <b>W04A</b>	APP CRS <b>036°</b>	Rwy Idg <b>5199</b> TDZE <b>3488</b> Apt Elev <b>3543</b>
----------------------------------------	------------------------	-----------------------------------------------------------------

# RNAV (GPS) RWY 4

LAUREL MUNI (6S8)

RNP APCH.		MISSED APPROACH: Climb to 4300 then climbing right turn to 7000 direct JIBES and hold.
<p><b>⚠</b> For uncompensated Baro-VNAV systems, LNAV/VNAV NA below -21°C or above 54°C. When local altimeter setting not received, use Billings altimeter setting. Baro-VNAV and VDP NA when using Billings altimeter setting. Rwy 4 helicopter visibility reduction below 3/4 SM NA.</p>		
AWOS-2 <b>135.05</b>	BILLINGS APP CON <b>119.2 120.5 284.6</b>	AUNICOM <b>123.05 (CTAF) 0</b>



CATEGORY	A	B	C	D
LPV DA	3783-1 295 (300-1)			
LNAV/VNAV DA	3981-1 3/4 493 (500-1 3/4)			
LNAV MDA	3980-1 492 (500-1)	3980-1 3/8 492 (500-1 3/8)		

NW-1, 23 JAN 2025 to 20 FEB 2025

NW-1, 23 JAN 2025 to 20 FEB 2025