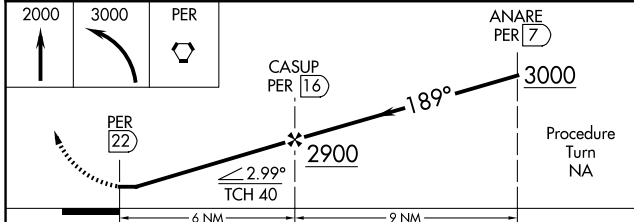
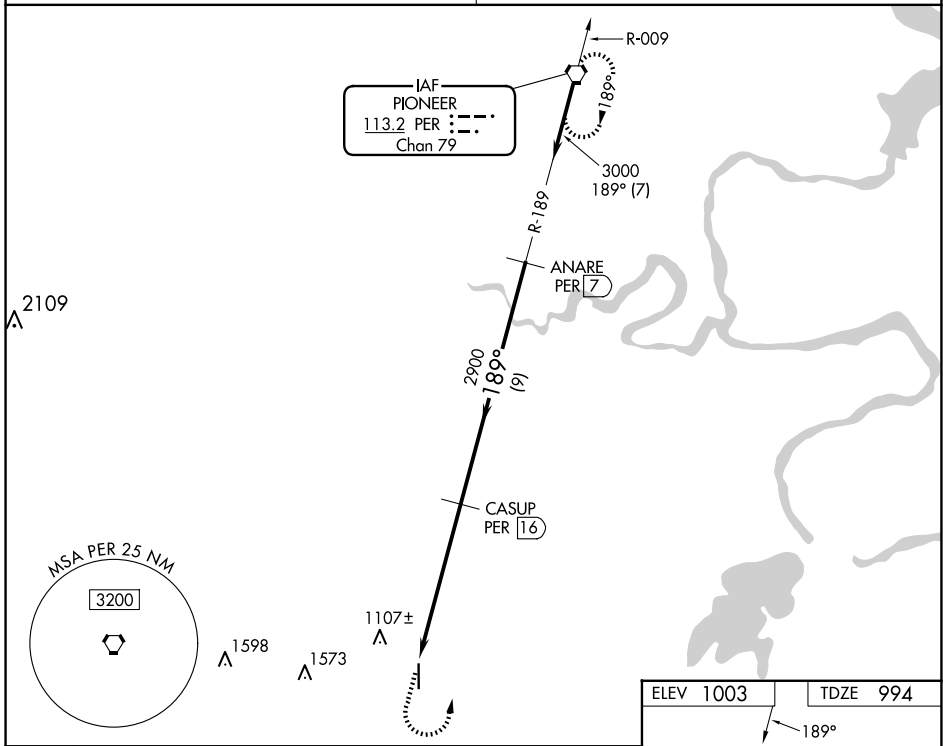


VORTAC PER 113.2 Chan 79	APP CRS 189°	Rwy Idg 5103 TDZE 994 Apt Elev 1003
--	------------------------	--

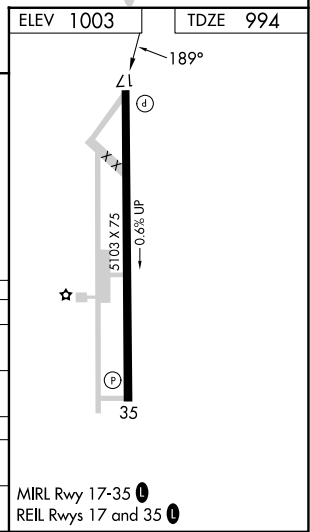
VOR RWY 17

PERRY MUNI (F22)

<p>▼ Obtain local altimeter setting on CTAF; when not received, use Ponca City altimeter setting. DME required.</p> <p>▲ NA</p>	<p>MISSED APPROACH: Climb to 2000 then climbing left turn to 3000 direct PER VORTAC and hold.</p>
<p>KANSAS CITY CENTER 127.8 319.1</p>	<p>UNICOM 122.8 (CTAF) 0</p>



CATEGORY	PONCA CITY ALTIMETER SETTING MINIMUMS			D
	A	B	C	
S-17	1500-1 506 (500-1)	1500-1¼ 506 (500-1¼)	1500-1½ 506 (500-1½)	NA
C CIRCLING	1500-1 497 (500-1)	1500-1¼ 497 (500-1¼)	1620-1¾ 617 (700-1¾)	NA
S-17	1560-1 566 (600-1)	1560-1¼ 566 (600-1¼)	1560-1⅝ 566 (600-1⅝)	NA
C CIRCLING	1560-1 557 (600-1)	1560-1¼ 557 (600-1¼)	1680-2 677 (700-2)	NA



SC-1, 23 JAN 2025 to 20 FEB 2025

SC-1, 23 JAN 2025 to 20 FEB 2025