

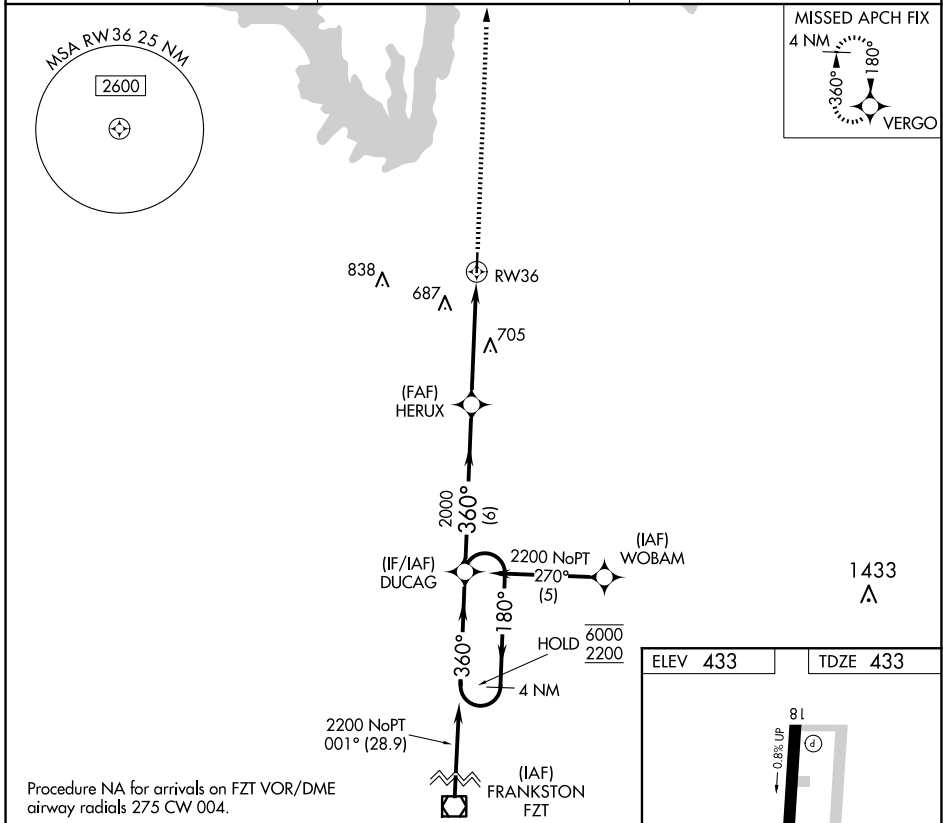
APP CRS	Rwy Idg	4002
360°	TDZE	433
	Apt Elev	433

RNAV (GPS) RWY 36

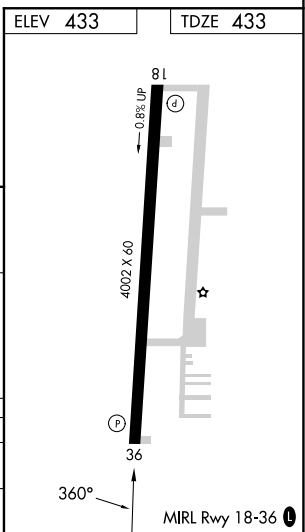
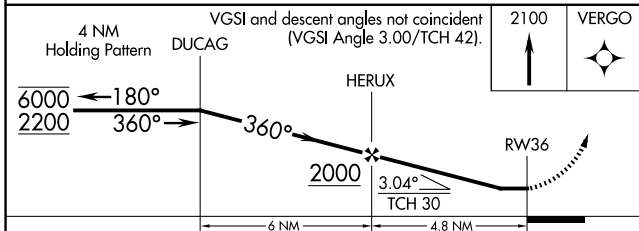
WOOD COUNTY/COLLINS FLD (JDD)

RNP APCH.	MISSED APPROACH: Climb to 2100 direct VERGO and hold.
<p>▼ Rwy 36 helicopter visibility reduction below 1 SM NA.</p> <p>▲ Straight-in and Circling Rwy 36 NA at night.</p>	

AWOS-3 118.9	LONGVIEW APP CON ★ 128.75 379.15	UNICOM 122.8 (CTAF) 0
------------------------	--	---------------------------------



Procedure NA for arrivals on FZT VOR/DME airway radials 275 CW 004.



CATEGORY	A	B	C	D
LNVA MDA	960-1	527 (600-1)	960-1½ 527 (600-1½)	NA
CIRCLING	960-1 527 (600-1)	1000-1 567 (600-1)	1000-1½ 567 (600-1½)	NA

SC-2, 23 JAN 2025 to 20 FEB 2025

SC-2, 23 JAN 2025 to 20 FEB 2025