

GARLAND FIVE DEPARTURE
(GARL5.TT) 25JAN24

ENNIS MUNI (F41)
ENNIS, TEXAS

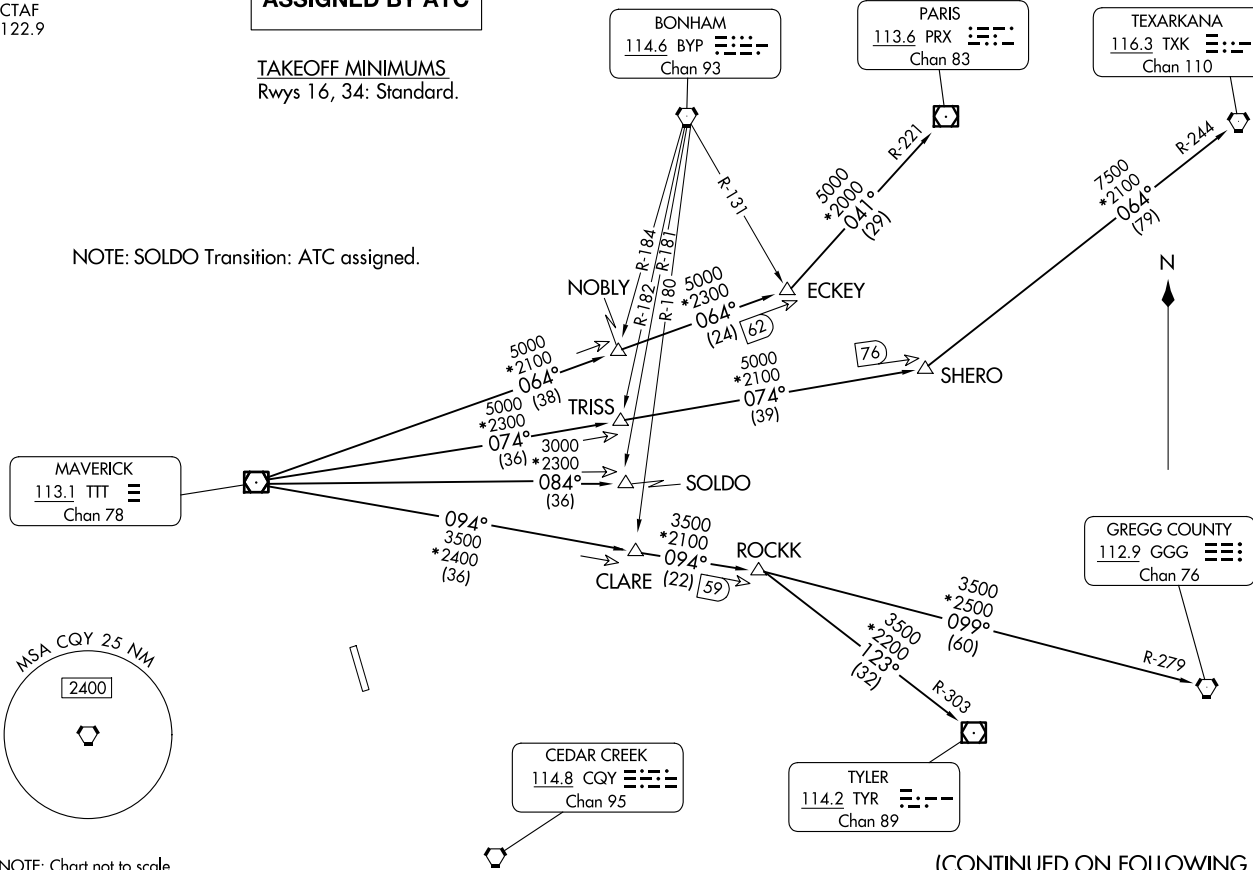
LONE STAR DEP CON
125.2 343.65
CTAF
122.9

**TOP ALTITUDE:
ASSIGNED BY ATC**

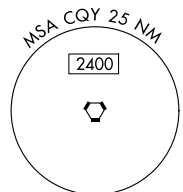
TAKEOFF MINIMUMS
Rwys 16, 34: Standard.

NOTE: SOLDO Transition: ATC assigned.

RADAR and DME required.



NOTE: Chart not to scale.



(CONTINUED ON FOLLOWING PAGE)

(GARL5.TT) 24305
GARLAND FIVE DEPARTURE

AL-6830 (FAA)

ENNIS MUNI (F41)
ENNIS, TEXAS

GARLAND FIVE DEPARTURE



DEPARTURE ROUTE DESCRIPTION

When entering controlled airspace, fly assigned heading for RADAR vectors to appropriate route. Maintain ATC assigned altitude.

GREGG COUNTY TRANSITION (GARL5.GGG): From over TTT VOR/DME on TTT R-094 to ROCKK, then on GGG R-279 to GGG VORTAC.

PARIS TRANSITION (GARL5.PRX): From over TTT VOR/DME on TTT R-064 to ECKEY, then on PRX R-221 to PRX VOR/DME.

SOLDO TRANSITION (GARL5.SOLDO): From over TTT VOR/DME on TTT R-084 to SOLDO.

TEXARKANA TRANSITION (GARL5.TXK): From over TTT VOR/DME on TTT R-074 to SHERO, then on TXK R-244 to TXK VORTAC.

TYLER TRANSITION (GARL5.TYR): From over TTT VOR/DME on TTT R-094 to ROCKK, then on TYR R-303 to TYR VOR/DME.

SC-2, 23 JAN 2025 to 20 FEB 2025

SC-2, 23 JAN 2025 to 20 FEB 2025