

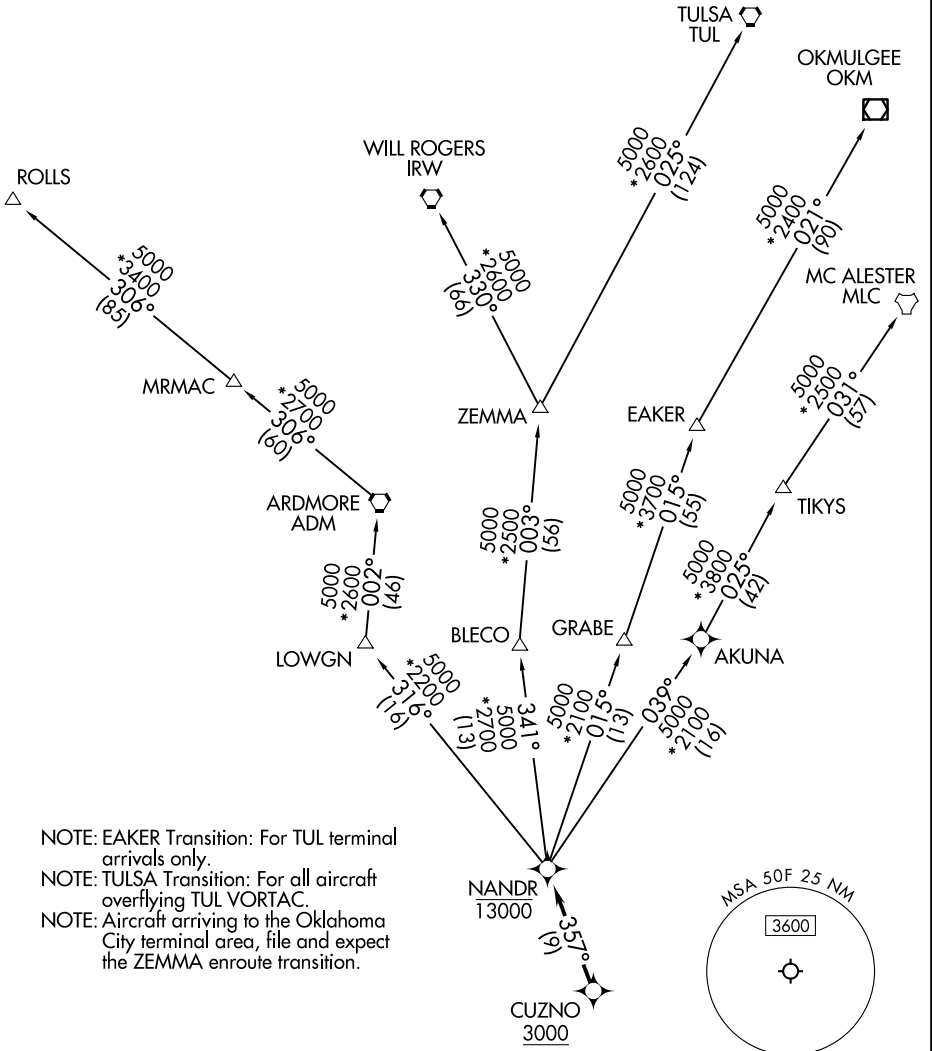
# NANDR TWO DEPARTURE (RNAV)

LONE STAR DEP CON  
135.975 379.9

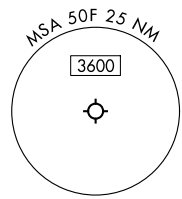
RNAV 1 - DME/DME/IRU or GPS.

RADAR required.

**TOP ALTITUDE:  
ASSIGNED BY ATC**



NOTE: EAKER Transition: For TUL terminal arrivals only.  
 NOTE: TULSA Transition: For all aircraft overflying TUL VORTAC.  
 NOTE: Aircraft arriving to the Oklahoma City terminal area, file and expect the ZEMMA enroute transition.



### TAKEOFF MINIMUMS

Rwy 17: 300-2 or standard with minimum climb of 512' per NM to 1300.



NOTE: Chart not to scale.

(CONTINUED ON FOLLOWING PAGE)

SC-2, 23 JAN 2025 to 20 FEB 2025

SC-2, 23 JAN 2025 to 20 FEB 2025

# NANDR TWO DEPARTURE (RNAV)



## DEPARTURE ROUTE DESCRIPTION

TAKEOFF RUNWAY 17: Climb on heading 165° or as assigned by ATC, thence...

... expect RADAR vectors to cross CUZNO at or above 3000, then on track 357° to cross NANDR at or below 13000, then on assigned transition.

- EAKER TRANSITION (NANDR2.EAKER)
- MC ALESTER TRANSITION (NANDR2.MLC)
- OKMULGEE TRANSITION (NANDR2.OKM)
- ROLLS TRANSITION (NANDR2.ROLLS)
- TULSA TRANSITION (NANDR2.TUL)
- WILL ROGERS TRANSITION (NANDR2.IRW)
- ZEMMA TRANSITION (NANDR2.ZEMMA)

SC-2, 23 JAN 2025 to 20 FEB 2025

SC-2, 23 JAN 2025 to 20 FEB 2025