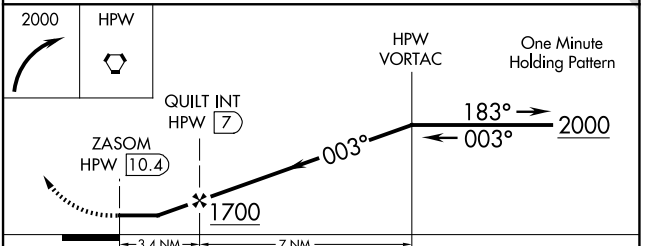
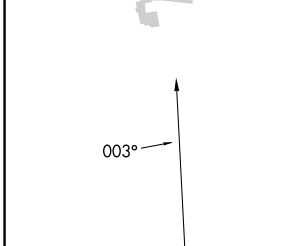
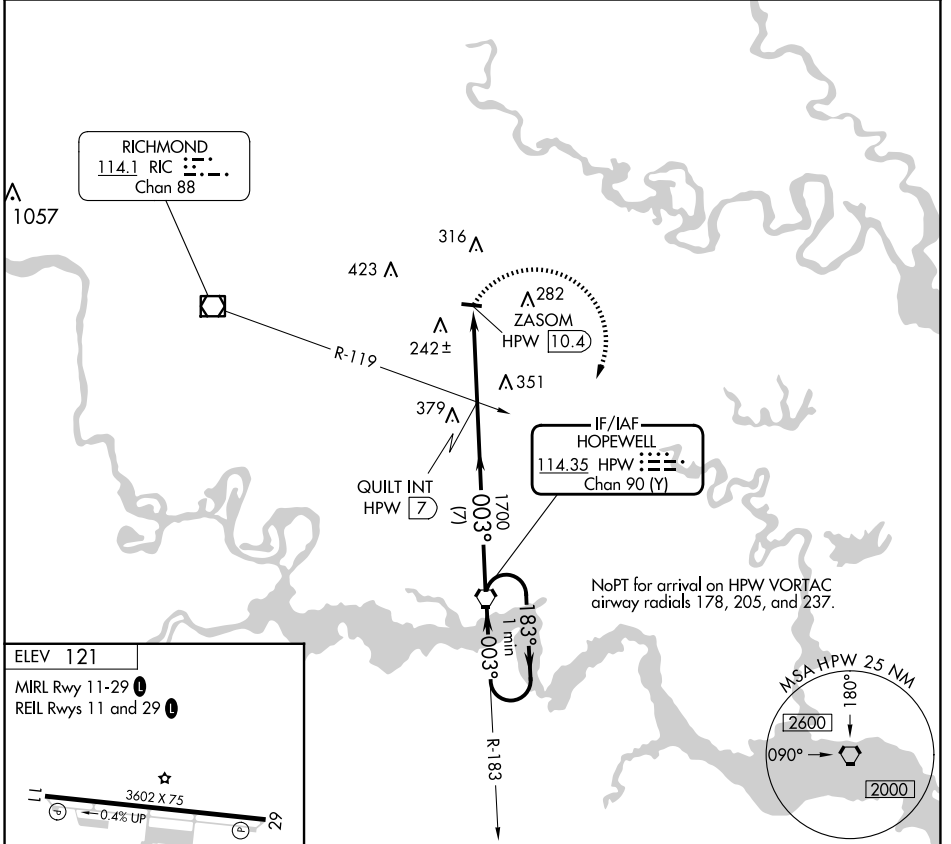


VORTAC HPW 114.35 Chan 90 (Y)	APP CRS 003°	Rwy Idg TDZE Apt Elev	N/A N/A 121
--	------------------------	-----------------------------	--

VOR-A
NEW KENT COUNTY (W96)

NA Use Richmond Intl altimeter setting. Procedure NA at night. Helicopter visibility reduction below 1 SM NA.	MISSED APPROACH: Climbing right turn to 2000 direct HPW VORTAC and hold.
--	--

AWOS-3 119.875	RIC ASOS 119.15 263.025	POTOMAC APP CON 126.4 282.375	UNICOM 122.8 (CTAF)
--------------------------	-----------------------------------	---	-------------------------------



FAF to MAP 3.4 NM						
Knots	60	90	120	150	180	
Min:Sec	3:24	2:16	1:42	1:22	1:08	
CATEGORY	A		B		C	D
<input checked="" type="checkbox"/> CIRCLING	660-1		539 (600-1)		760-1 ³ / ₄ 639 (700-1 ³ / ₄)	NA

NE-3, 23 JAN 2025 to 20 FEB 2025

NE-3, 23 JAN 2025 to 20 FEB 2025