

APP CRS  
**185°**

Rwy Idg **4220**  
TDZE **339**  
Apt Elev **345**

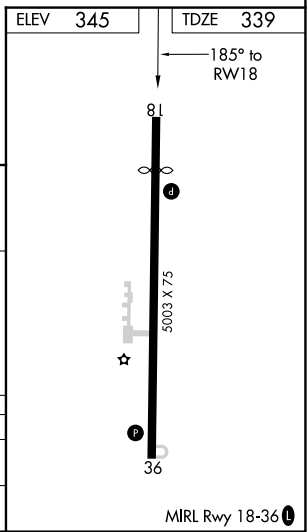
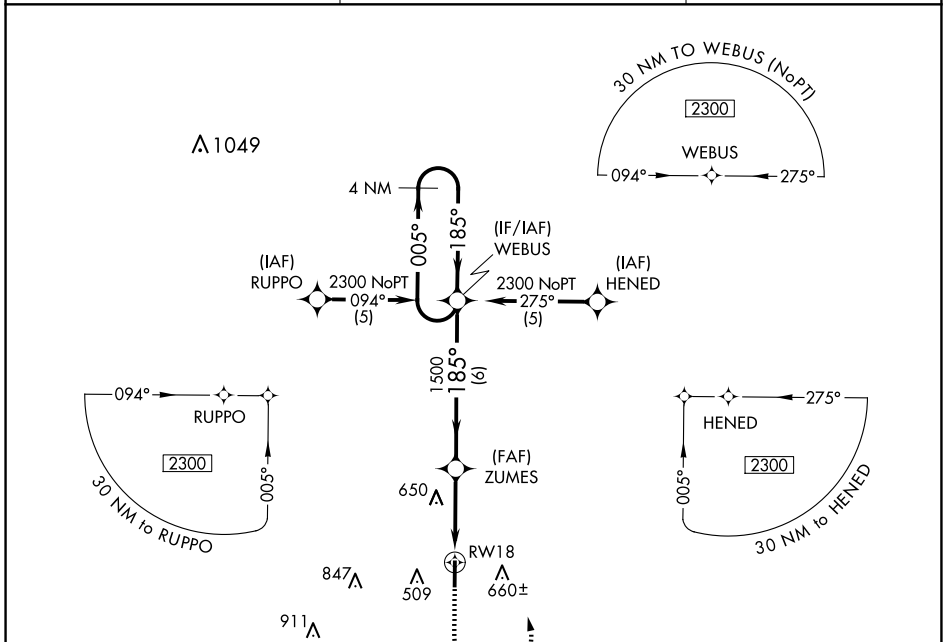
# RNAV (GPS) RWY 18

DR C P SAVAGE SR (53A)

**NA** DME/DME RNP-0.3 NA. Procedure NA at night. Helicopter visibility reduction below 1 SM NA. Use Americus altimeter setting, when not received use Macon altimeter setting and increase all MDA 20 feet.

MISSED APPROACH: Climb to 1500 then climbing left turn to 2300 direct WEBUS and hold.

ACJ AWOS-3 **128.375** ATLANTA APP CON \* **124.2 279.6** CTAf **122.9**



4 NM Holding Pattern		VGSI and descent angles not coincident (VGSI Angle 3.30/TCH 35).		1500	2300	WEBUS
2300 ← 005°		185° →		ZUMES		
3.03° TCH 45		1500		RWY 18		
6 NM		3.5 NM				

CATEGORY	A	B	C	D
LNVA MDA	1020-1	681 (700-1)	1020-2 681 (700-2)	NA
CIRCLING	1020-1	675 (700-1)	1120-2½ 775 (800-2½)	NA

SE-4, 23 JAN 2025 to 20 FEB 2025

SE-4, 23 JAN 2025 to 20 FEB 2025