

| | | | |
|--|------------------------|-----------------------------|---|
| WAAS CH 86625 W20A | APP CRS 198° | Rwy Idg TDZE Apt Elev | 6001 501 501 |
|--|------------------------|-----------------------------|---|

RNAV (GPS) RWY 20

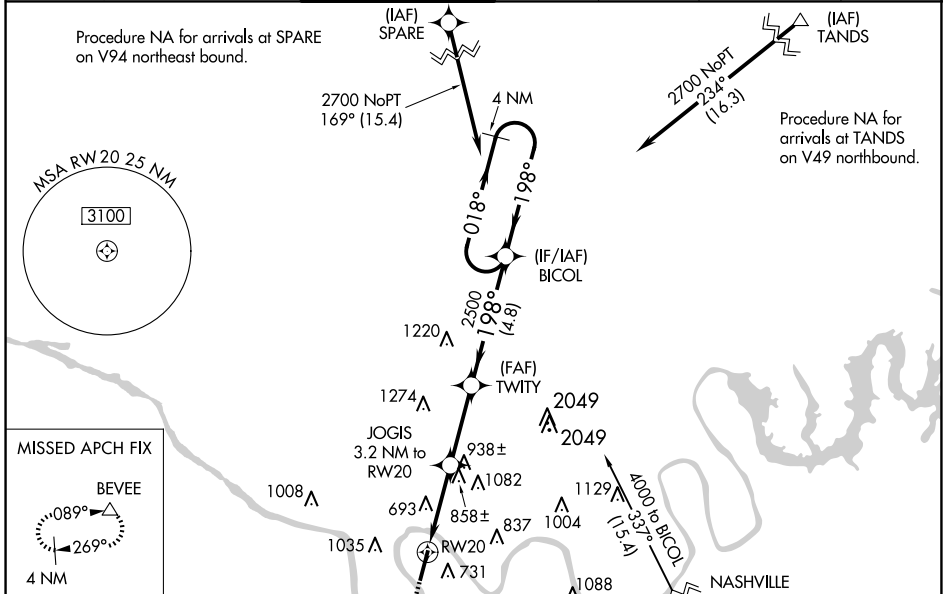
JOHN C TUNE (JWN)

▽ For uncompensated Baro-VNAV systems, LNAV/VNAV NA below -1.5°C (5°F) or above 54°C (130°F), DME/DME RNP-0.3 NA. When local altimeter setting not received, use Nashville Intl altimeter setting and increase all DA 40 feet and all visibilities 1/8 mile; increase all MDA 40 feet and LNAV Cats C and D visibility 1/8 mile. Circling NA east of Rwy 2-20. Baro-VNAV and VDP NA when using Nashville Intl altimeter setting. Helicopter visibility reduction below 3/4 SM NA.

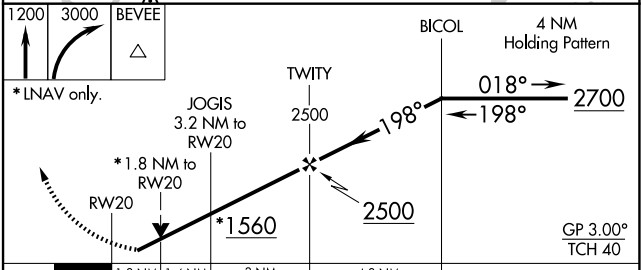
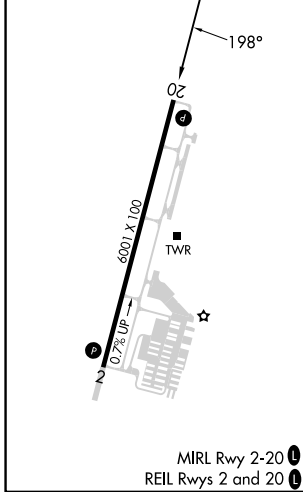
△ NA

MISSED APPROACH: Climb to 1200 then climbing right turn to 3000 direct BEVEE and hold.

| | | | | | | |
|------------------------|--|---|-------------------------|--------------------------|--|------------------------|
| ATIS 127.075 | NASHVILLE APP CON 119.35 372.0 | JOHN TUNE TOWER ★ 119.45 (CTAF) 0 | GND CON 121.7 | CLNC DEL 121.7 | CLNC DEL 124.55 (when twr closed) | UNICOM 122.7 |
|------------------------|--|---|-------------------------|--------------------------|--|------------------------|



| | |
|----------|-------------------|
| ELEV 501 | D TDZE 501 |
|----------|-------------------|



| CATEGORY | A | B | C | D |
|-------------------|--------|-------------|-------------------------|-------------------------|
| LPV DA | | 856-1¼ | 355 (400-1¼) | |
| LNAV/VNAV DA | | 1003-1¾ | 502 (600-1¾) | |
| LNAV MDA | 1120-1 | 619 (700-1) | 1120-1¾ | 619 (700-1¾) |
| C CIRCLING | 1200-1 | 699 (700-1) | 1340-2½ 839 (900-2½) | 1340-2¾ 839 (900-2¾) |

RNAV (GPS) RWY 20

SE-1, 23 JAN 2025 to 20 FEB 2025

SE-1, 23 JAN 2025 to 20 FEB 2025