

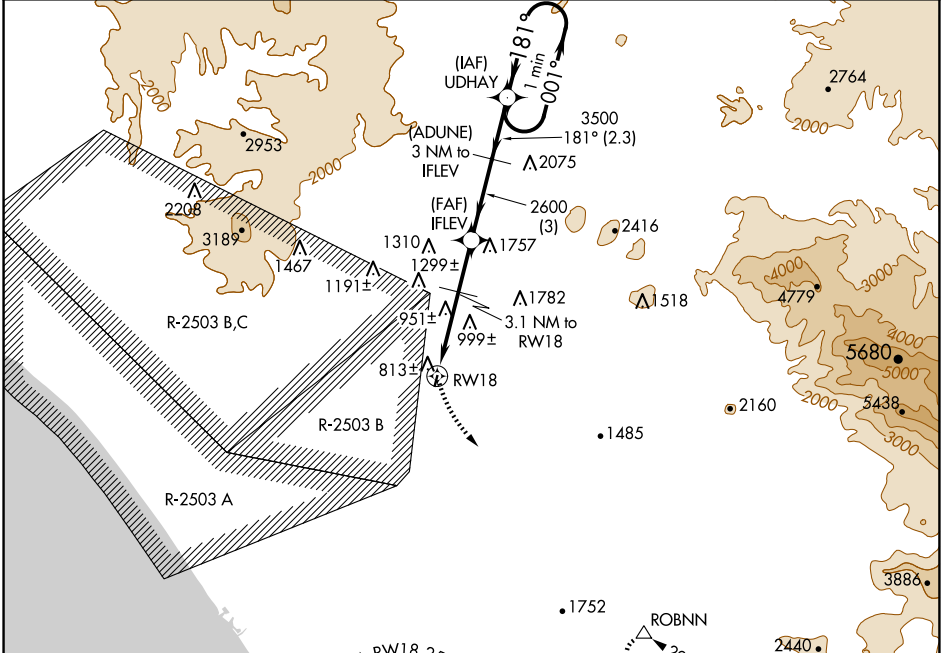
APP CRS	Rwy Idg	<b>2160</b>
<b>181°</b>	TDZE	<b>708</b>
	Apt Elev	<b>708</b>

**GPS RWY 18**  
FALLBROOK COMMUNITY AIRPARK (L18)

**⚠** Circling NA west of Rwy 18-36. When local altimeter setting not received, use Miramar MCAS (Joe Foss Fld) altimeter setting and increase all MDAs 120 feet.

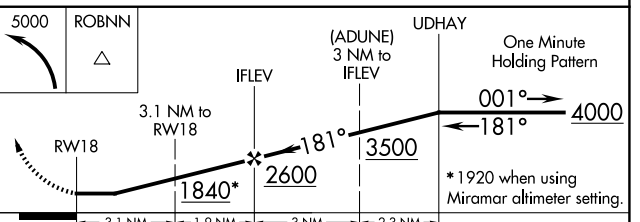
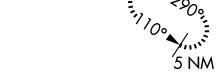
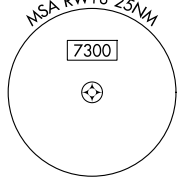
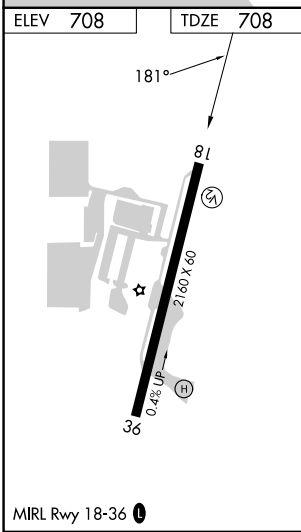
**⚠** MISSED APPROACH: Climbing left turn to 5000 direct ROBNN WP and hold.

AWOS-3P <b>118.425</b>	SOCAL APP CON <b>127.3 323.0</b>	CTAF <b>123.05 0</b>
---------------------------	-------------------------------------	-------------------------



SW-3, 23 JAN 2025 to 20 FEB 2025

SW-3, 23 JAN 2025 to 20 FEB 2025



CATEGORY	A	B	C	D
S-18	1260-1	552 (600-1)		NA
CIRCLING	1260-1 552 (600-1)	1380-1 672 (700-1)		NA