

WAAS CH 53730 W17A	APP CRS 172°	Rwy Idg TDZE 1738 Apt Elev 1739
--	------------------------	---

RNAV (GPS) RWY 17

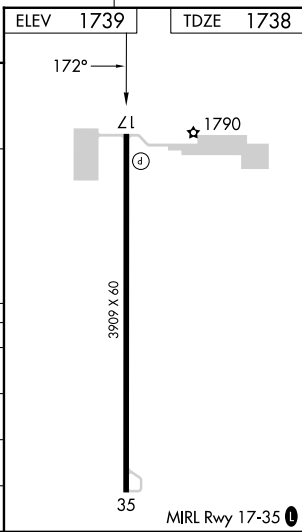
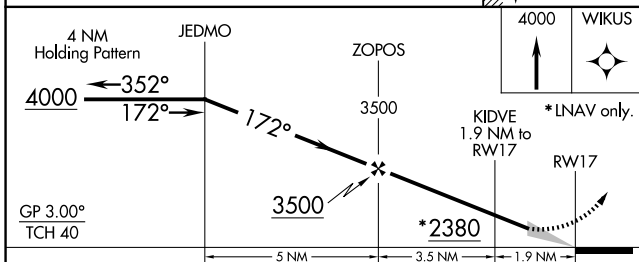
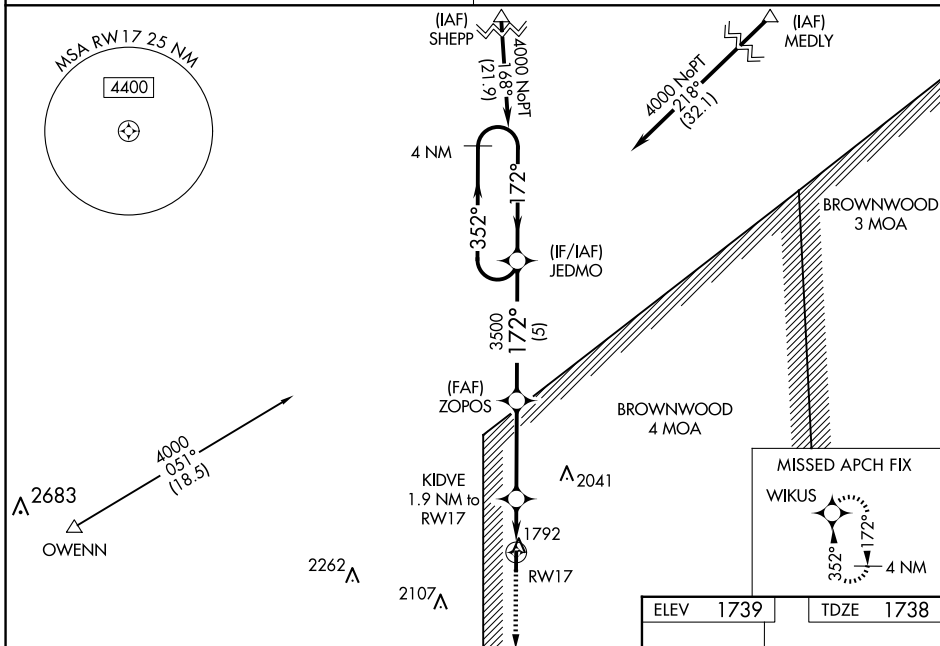
BRUCE FLD (E30)

Baro-VNAV NA.
DME/DME RNP-0.3 NA.
NA
 Use San Angelo altimeter setting, when not received use Brady altimeter setting and increase all DA 15 feet and all MDA 20 feet, and increase LPV and LNAV/VNAV all Cats visibility 1/8 mile.

MISSED APPROACH:
 Climb to 4000 direct
 WIKUS and hold.

SAN ANGELO APP CON ★
125.35 354.1

CTAF
122.9 0



CATEGORY	A	B	C	D
LPV DA	2089-1 1/8	351 (400-1 1/8)		NA
LNAV/VNAV DA	2089-1 1/8	351 (400-1 1/8)		NA
LNAV MDA	2160-1	422 (500-1)		NA
CIRCLING	2220-1	481 (500-1)		NA

SC-3, 23 JAN 2025 to 20 FEB 2025

SC-3, 23 JAN 2025 to 20 FEB 2025