

APP CRS 318°	Rwy Idg 4660
	TDZE 988
	Apt Elev 989

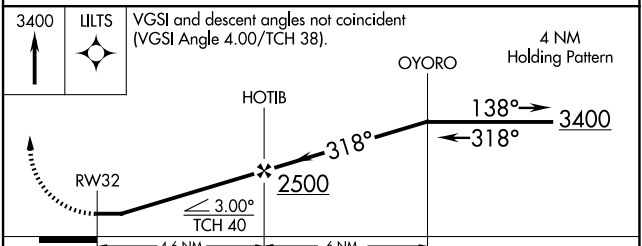
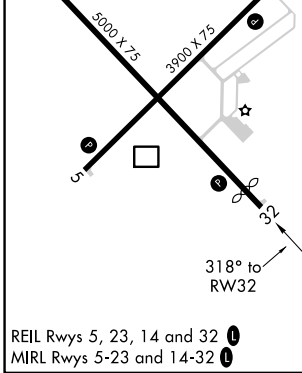
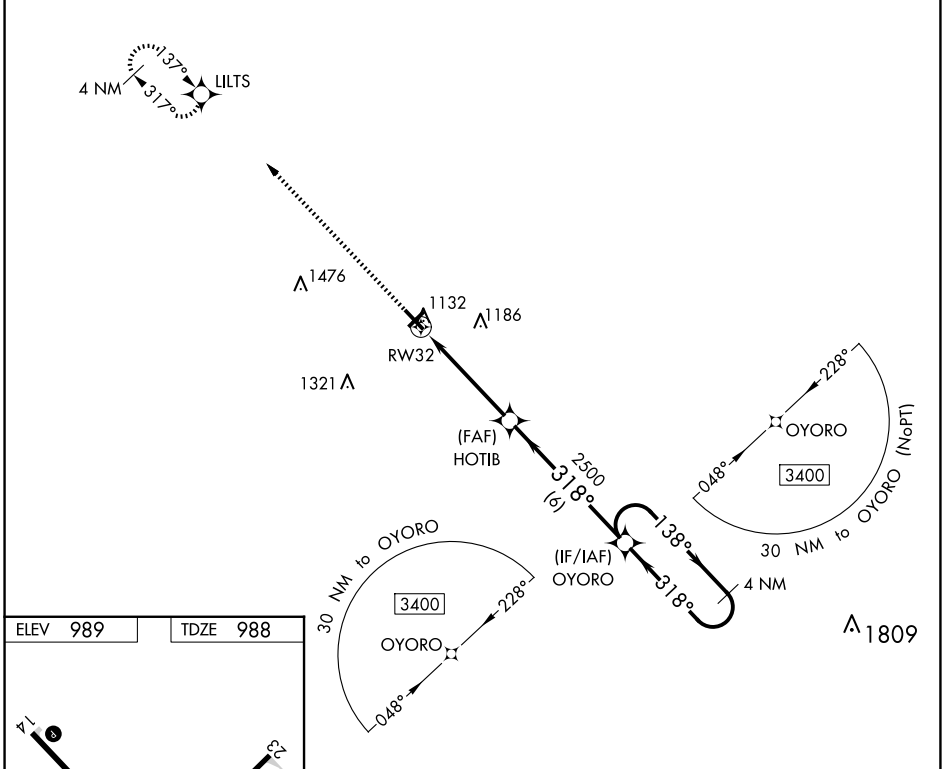
RNAV (GPS) RWY 32

BURNETT COUNTY (RZN)

⚠ DME/DME RNP-0.3 NA. When local altimeter setting not received, use Rush City, MN altimeter setting and increase all MDA 80 feet; increase LNAV Cat C/D visibility 1/4 mile, and Circling Cat C/D visibility 1/4 mile. Helicopter visibility reduction below 1 SM NA. Night landing: Rwy 5, 23, 32 NA.

MISSED APPROACH:
Climb to 3400 direct LILTS and hold.

AWOS-3 118.325	MINNEAPOLIS CENTER 121.05 225.775	UNICOM 122.8 (CTAF) 0
--------------------------	---	---------------------------------



CATEGORY	A	B	C	D
LNAV MDA	1440-1 452 (500-1)		1440-1 3/8 452 (500-1 3/8)	
C CIRCLING	1440-1 451 (500-1)		1540-1 1/2 551 (600-1 1/2)	1680-2 1/4 691 (700-2 1/4)

EC-3, 23 JAN 2025 to 20 FEB 2025

EC-3, 23 JAN 2025 to 20 FEB 2025