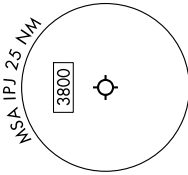


# KILNS FIVE DEPARTURE (RNAV)

SE-2, 23 JAN 2025 to 20 FEB 2025

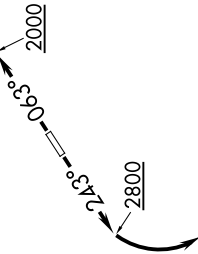
CHARLOTTE DEP CON  
134.75 257.2  
AWOS-3  
119.675  
CLINC DEL (GCO)  
124.9  
UNICOM (CTAF)  
123.05



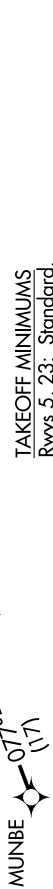
**TOP ALTITUDE:**  
3000

RNAV 1 - DME/DME/IRU or GPS.  
RADAR required.

NOTE: For turbojets only.  
NOTE: Transponder code will be issued via PDC or Charlotte CLINC DEL.  
NOTE: Upon reaching 10000 MSL, accelerate to and maintain 280K, if unable advise ATC.  
NOTE: If unable to accept climb rates, advise ATC on initial contact.



TAKEOFF MINIMUMS  
Rwys 5, 23: Standard.



NOTE: Chart not to scale.

## DEPARTURE ROUTE DESCRIPTION

**TAKEOFF RUNWAY 5:** Climb on heading 063° to 2000 before proceeding on course, then on heading assigned by ATC, thence . . . .  
**TAKEOFF RUNWAY 23:** Climb on heading 243° to 2800 before turning left, then on heading assigned by ATC, thence . . . .

. . . . on RADAR vectors to MUNBE, then on depicted route to KILNS, then on AUDII Transition. Maintain 3000. Expect clearance to filed altitude within 10 minutes after departure.

**AUDII TRANSITION (KILNS5.AUDII)**

SE-2, 23 JAN 2025 to 20 FEB 2025