

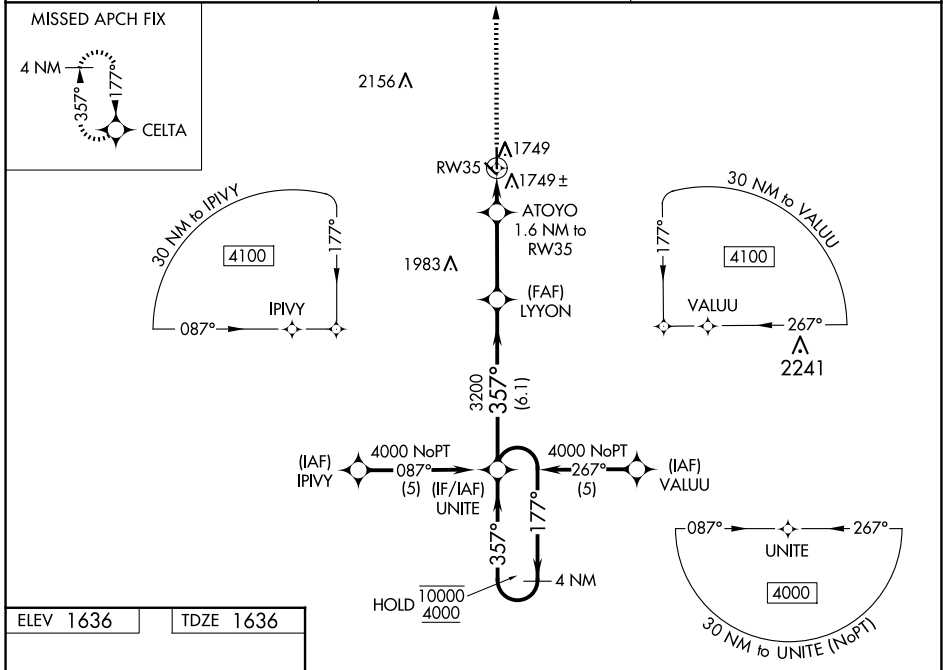
WAAS CH 93614 W35A	APP CRS 357°	Rwy Idg 4317 TDZE 1636 Apt Elev 1636
--	------------------------	---

RNAV (GPS) RWY 35

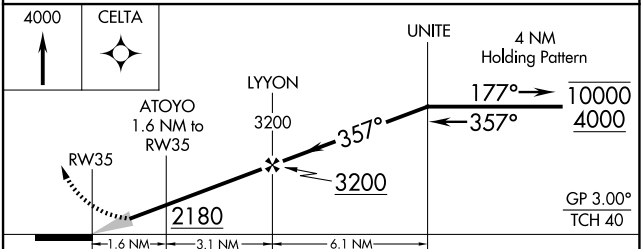
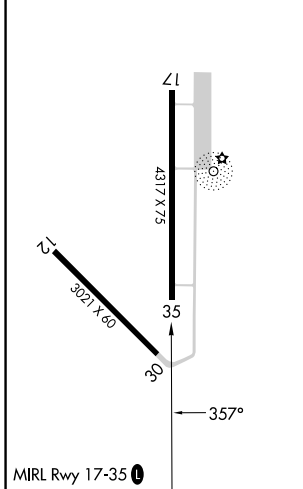
FAIRMONT STATE (F^MZ)

RNP APCH - GPS.	MISSED APPROACH: Climb to 4000 direct CELTA and hold.
<p>⚠ NA Circling to Rwy 12, 30 NA at night. Baro-VNAV NA. Use York altimeter setting; when not received, use Hebron altimeter setting and increase LPV DA to 1965 feet and all visibilities $\frac{1}{8}$ SM; increase LNAV/VNAV DA to 2125 feet; and increase all MDAs 40 feet.</p>	

JYR AWOS-3 124.175	MINNEAPOLIS CENTER 119.4 278.8	CTAF 122.9
------------------------------	--	----------------------



ELEV 1636	TDZE 1636
-----------	-----------



CATEGORY	A	B	C	D
LPV DA	1934-7 $\frac{7}{8}$	298 (300-7 $\frac{7}{8}$)		NA
LNAV/VNAV DA	2094-1 $\frac{3}{8}$	458 (500-1 $\frac{3}{8}$)		NA
LNAV MDA	2060-1	424 (500-1)		NA
C CIRCLING	2120-1	484 (500-1)		NA

NC-2, 23 JAN 2025 to 20 FEB 2025

NC-2, 23 JAN 2025 to 20 FEB 2025