

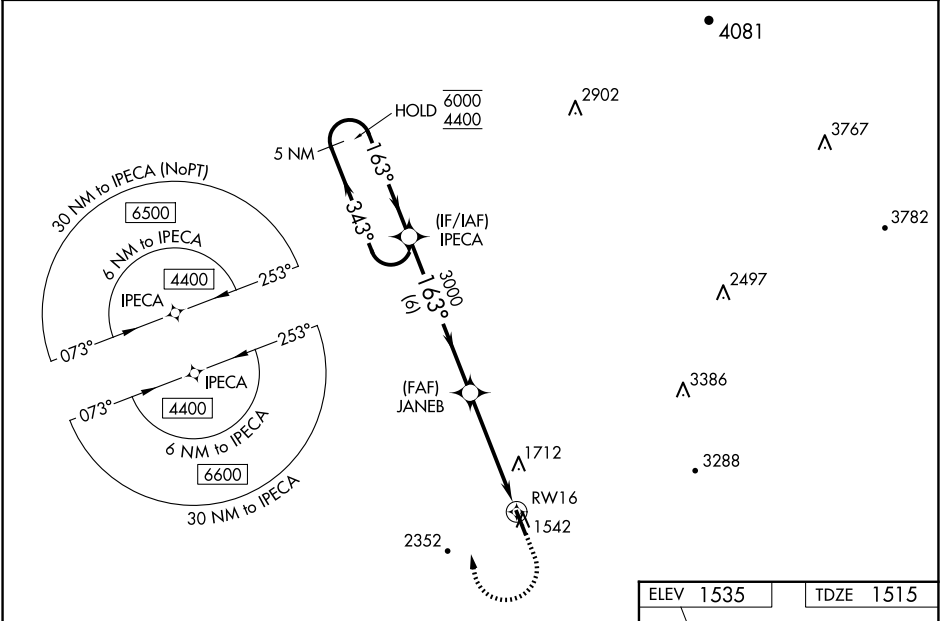
WAAS CH 82005 W16A	APP CRS 163°	Rwy Idg TDZE Apt Elev	5000 1515 1535
--	------------------------	-----------------------------	---

RNAV (GPS) RWY 16

PICKENS COUNTY (JZP)

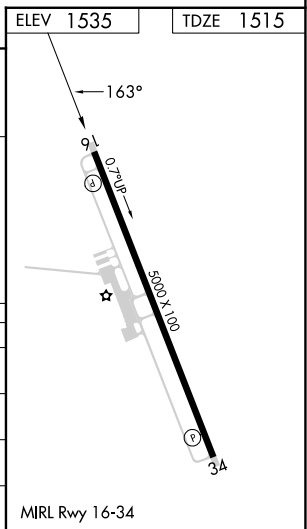
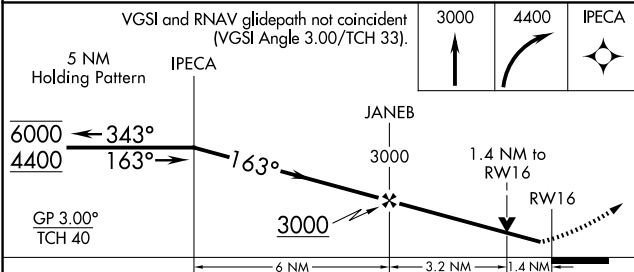
RNP APCH - GPS.		MISSED APPROACH: Climb to 3000 then climbing right turn to 4400 direct IPECA and hold.
▽ ▲ Rwy 16 helicopter visibility reduction below ¾ SM NA. For uncompensated Baro-VNAV systems, LNAV/VNAV NA below -18°C or above 54°C.		

AWOS-3PT 120.025	ATLANTA CENTER 133.1 342.425	UNICOM 122.725 (CTAF)
----------------------------	--	---------------------------------



SE-4, 23 JAN 2025 to 20 FEB 2025

SE-4, 23 JAN 2025 to 20 FEB 2025



CATEGORY	A	B	C	D
LPV DA		1915-1½	400 (400-1½)	
LNAV/VNAV DA		1980-1¾	465 (500-1½)	
LNAV MDA	1980-1	465 (500-1)	1980-1¾	465 (500-1½)
CIRCLING	1980-1 445 (500-1)	2360-1¼ 825 (900-1¼)	2760-3	1225 (1300-3)