

WAAS CH 69438 W10A	APP CRS 096°	Rwy Idg TDZE Apt Elev	5002 240 240
----------------------------------------	------------------------	-----------------------------	-----------------------------------------

RNAV (GPS) RWY 10

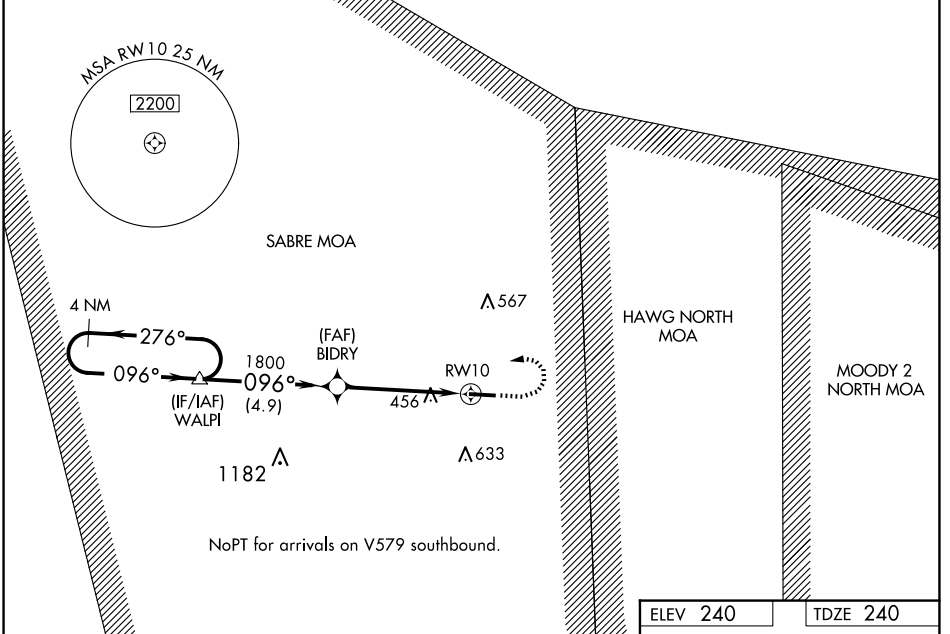
BERRIEN COUNTY (4J2)

▽ Baro-VNAV NA. DME/DME RNP-0.3 NA. Helicopter visibility reduction below 3/4 SM NA. Use Moody AFB altimeter setting. When not received, use Douglas altimeter setting and increase all DA 24 feet and MDA 40 feet; increase LNAV/VNAV all Cats visibility 1/8 mile and increase LNAV Cat C and Circling Cat C visibility 1/4 mile. Night landing: Rwy 28 NA.

▲ NA

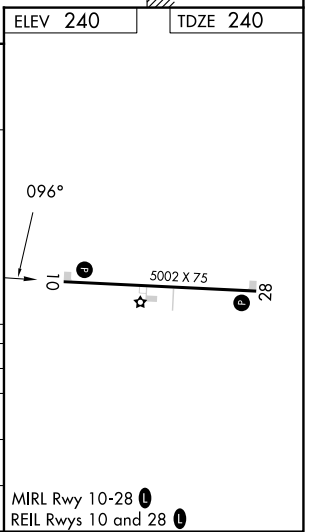
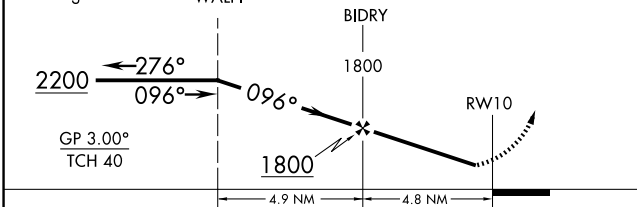
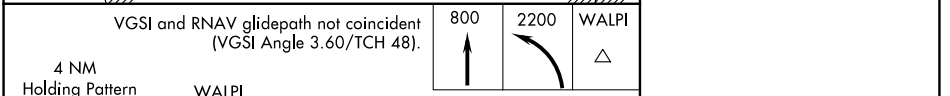
MISSED APPROACH: Climb to 800 then climbing left turn to 2200 direct WALPI and hold.

KVAD ATIS ★ 273.5	VALDOSTA APP CON ★ 126.6 285.6	UNICOM 122.7 (CTAF) 0
-----------------------------	------------------------------------------	---------------------------------



SE-4, 23 JAN 2025 to 20 FEB 2025

SE-4, 23 JAN 2025 to 20 FEB 2025



CATEGORY	A	B	C	D
LPV DA	560-1 1/8	320 (400-1 1/8)		NA
LNAV/VNAV DA	793-1 7/8	553 (600-1 7/8)		NA
LNAV MDA	760-1	520 (600-1)	760-1 3/8 520 (600-1 3/8)	NA
C CIRCLING	820-1	580 (600-1)	980-2 740 (800-2)	NA