

IZZ0 EIGHT DEPARTURE (RNAV)

AL-6915 (FAA)

GLENDALE RGNL (GEU)
GLENDALE, ARIZONA

SW-4, 23 JAN 2025 to 20 FEB 2025

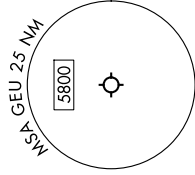
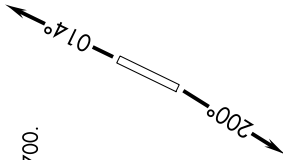
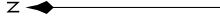
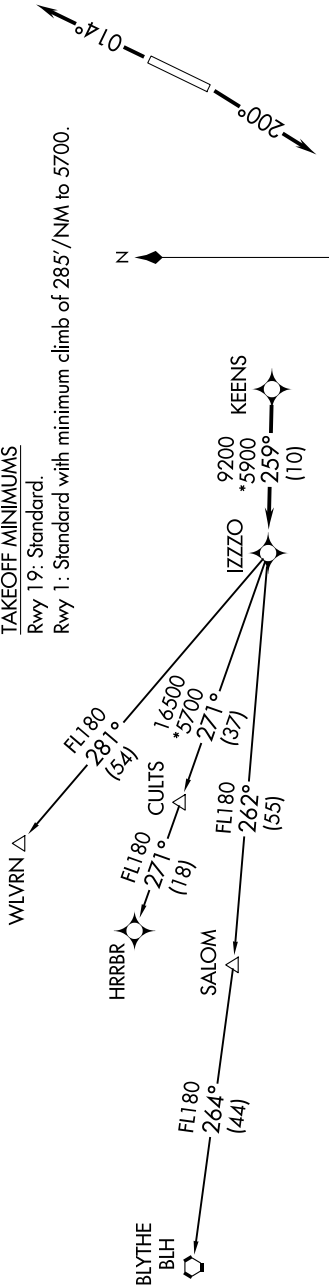
TOP ALTITUDE: ASSIGNED BY ATC

LUKE DEP CON*
118.15 363.125
PHOENIX DEP CON
120.7 239.0
ATIS
119.425
GND CON
118.0
GLENDALE TOWER*
121.0

NOTE: Turbojets and turboprops only.
NOTE: Aircraft requesting FL220 and below must file BLYTHE Transition.
NOTE: Turbojets landing LAX, file WLVRN Transition.
NOTE: Aircraft landing other than LAX and turboprops landing at LAX: Requesting FL240 and above, file HRRBR Transition.
NOTE: Aircraft departing KGEU and KGYR ATC assigned only.

TAKEOFF MINIMUMS

Rwy 19: Standard.
Rwy 1: Standard with minimum climb of 285'/NM to 5700.



NOTE: Chart not to scale.

DEPARTURE ROUTE DESCRIPTION

TAKEOFF RUNWAY 1: Climb on heading 014° or as assigned by ATC, thence. . . .
TAKEOFF RUNWAY 19: Climb on heading 200° or as assigned by ATC, thence. . . .
 . . . for RADAR vectors to KEENS, then on track 259° to IZZO, then on (transition).
 Maintain ATC assigned altitude, expect filed altitude 3 minutes after departure.

- BLYTHE TRANSITION (IZZ08.BLH)
- HRRBR TRANSITION (IZZ08.HRRBR)
- WLVRN TRANSITION (IZZ08.WLVRN)

SW-4, 23 JAN 2025 to 20 FEB 2025

IZZ0 EIGHT DEPARTURE (RNAV)