

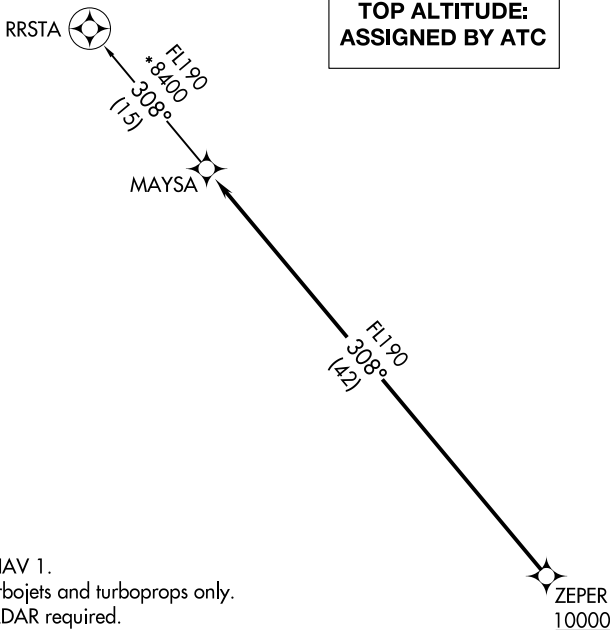
(MAYSA7.MAYSA) 24249

MAYSA SEVEN DEPARTURE (RNAV) AL-6915 (FAA)

GLENDALE RGNL (G^ETU)
GLENDALE, ARIZONA

**TOP ALTITUDE:
ASSIGNED BY ATC**

ATIS
119.425
GND CON
118.0
GLENDALE TOWER *
121.0
LUKE DEP CON *
118.15 363.125
PHOENIX DEP CON
120.7 239.0

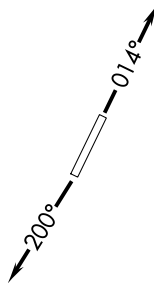


- NOTE: RNAV 1.
- NOTE: Turbojets and turboprops only.
- NOTE: RADAR required.
- NOTE: GPS required.
- NOTE: Aircraft departing KGEU and KGYR ATC assigned only. Do not file.

TAKEOFF MINIMUMS

Rwys 1, 19: Standard.

NOTE: Chart not to scale.



DEPARTURE ROUTE DESCRIPTION

TAKEOFF RUNWAY 1: Climb on heading 014° or as assigned by ATC, thence. . .

TAKEOFF RUNWAY 19: Climb on heading 200° or as assigned by ATC, thence. . .

. . . expect RADAR vectors to cross ZEPER at or above 10000, then on track 308° to MAYSA, then on RRSTA TRANSITION. Maintain ATC assigned altitude, expect filed altitude 3 minutes after departure.

RRSTA TRANSITION (MAYSA7.RRSTA)

MAYSA SEVEN DEPARTURE (RNAV)

(MAYSA7.MAYSA) 21MAY20

GLENDALE, ARIZONA
GLENDALE RGNL (G^ETU)

SW-4, 23 JAN 2025 to 20 FEB 2025

SW-4, 23 JAN 2025 to 20 FEB 2025