

GARLAND FIVE DEPARTURE
(GARLS.TT) 25JAN24

PEROT FLD./FORT WORTH ALLIANCE (AFTW)
FORT WORTH, TEXAS

LONE STAR DEP CON
118.1 306.95
ATIS
126.925
CLNC DEL
128.725
GND CON
132.65 306.2
ALLIANCE TOWER
135.15 257.9

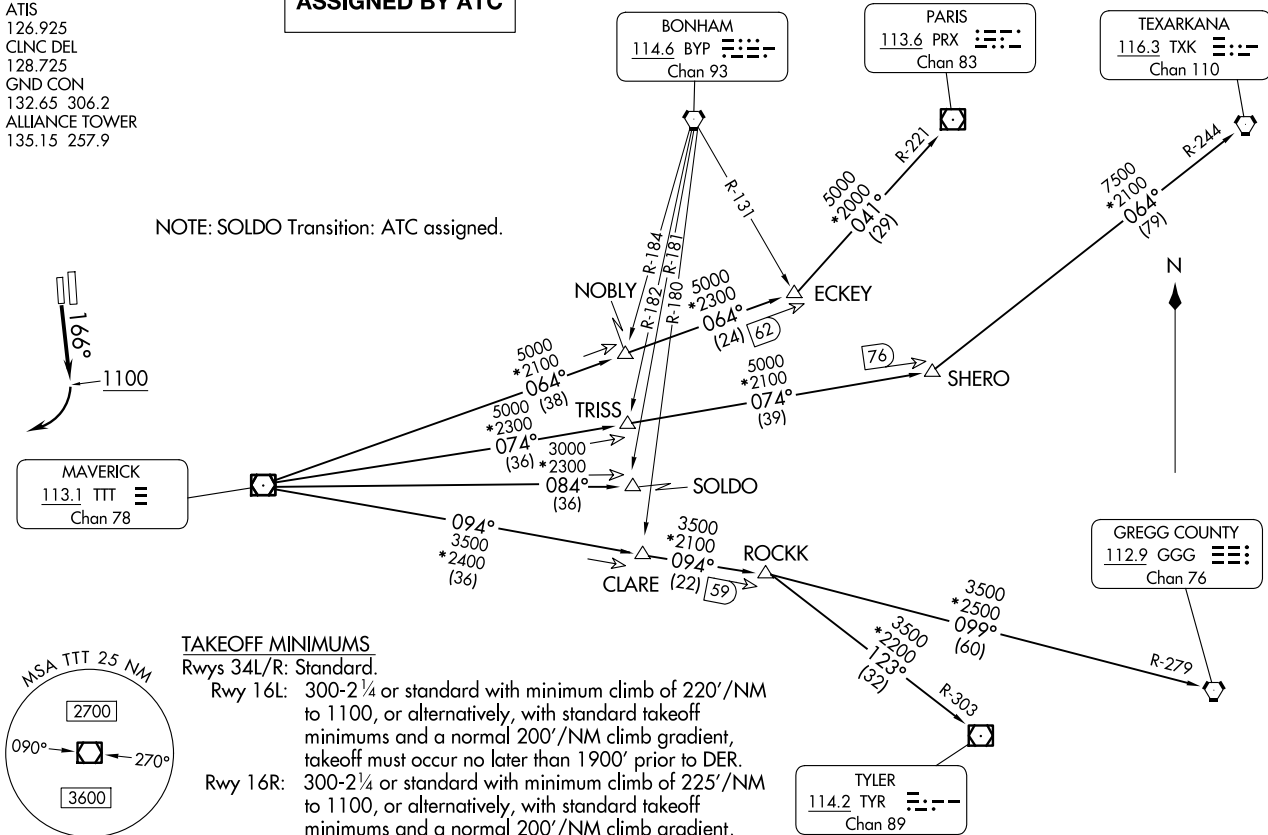
**TOP ALTITUDE:
ASSIGNED BY ATC**

RADAR and DME required.

(GARLS.TT) 24305
GARLAND FIVE DEPARTURE

AL-6918 (FAA)
PEROT FLD./FORT WORTH ALLIANCE (AFTW)
FORT WORTH, TEXAS

NOTE: SOLDO Transition: ATC assigned.



TAKEOFF MINIMUMS

Rwys 34L/R: Standard.

Rwy 16L: 300-2¼ or standard with minimum climb of 220'/NM to 1100, or alternatively, with standard takeoff minimums and a normal 200'/NM climb gradient, takeoff must occur no later than 1900' prior to DER.

Rwy 16R: 300-2¼ or standard with minimum climb of 225'/NM to 1100, or alternatively, with standard takeoff minimums and a normal 200'/NM climb gradient, takeoff must occur no later than 2000' prior to DER.

(CONTINUED ON FOLLOWING PAGE)

GARLAND FIVE DEPARTURE



DEPARTURE ROUTE DESCRIPTION

TAKEOFF RUNWAY 16R: Climb on heading 166° to 1100 before turning right.

When entering controlled airspace, fly assigned heading for RADAR vectors to appropriate route. Maintain ATC assigned altitude.

GREGG COUNTY TRANSITION (GARL5.GGG): From over TTT VOR/DME on TTT R-094 to ROCKK, then on GGG R-279 to GGG VORTAC.

PARIS TRANSITION (GARL5.PRX): From over TTT VOR/DME on TTT R-064 to ECKEY, then on PRX R-221 to PRX VOR/DME.

SOLDO TRANSITION (GARL5.SOLDO): From over TTT VOR/DME on TTT R-084 to SOLDO.

TEXARKANA TRANSITION (GARL5.TXK): From over TTT VOR/DME on TTT R-074 to SHERO, then on TXK R-244 to TXK VORTAC.

TYLER TRANSITION (GARL5.TYR): From over TTT VOR/DME on TTT R-094 to ROCKK, then on TYR R-303 to TYR VOR/DME.

SC-2, 23 JAN 2025 to 20 FEB 2025

SC-2, 23 JAN 2025 to 20 FEB 2025