

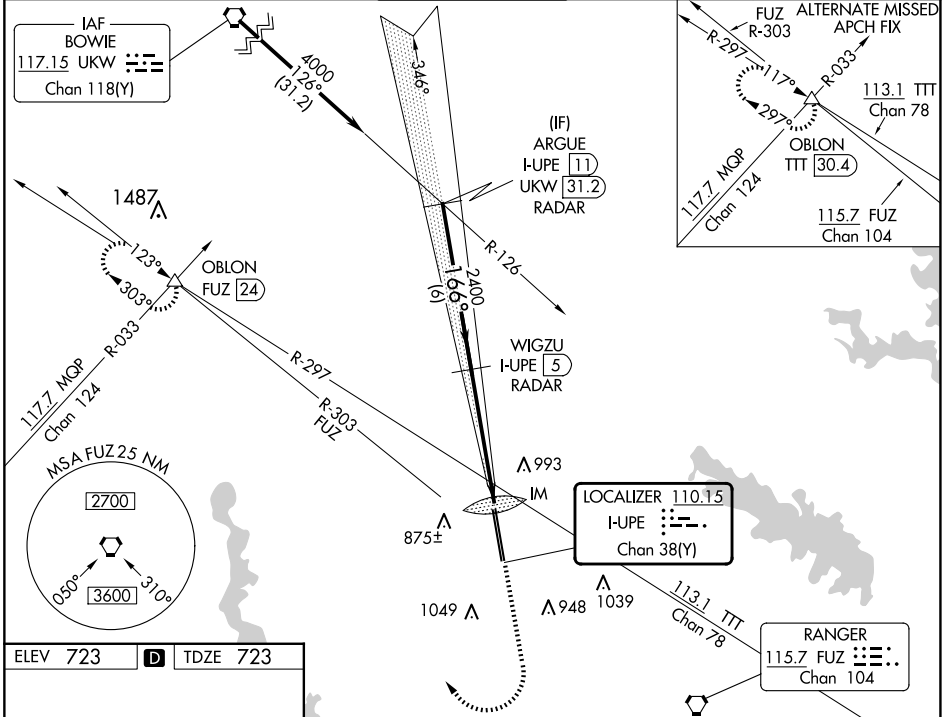
LOC/DME I-UIPE <b>110.15</b> Chan <b>38 (Y)</b>	APP CRS <b>166°</b>	Rwy Idg <b>10600</b> TDZE <b>723</b> Apt Elev <b>723</b>
---	------------------------	--

# ILS RWY 16L (CAT II & III)

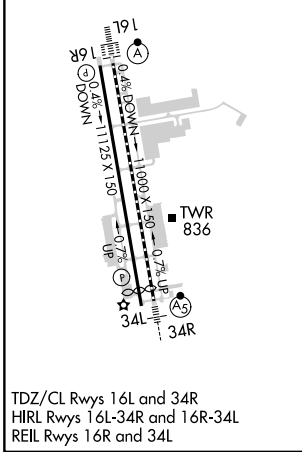
PEROT FLD/FORT WORTH ALLIANCE (AFW)

DME or RADAR required.	ALSF-2	MISSED APPROACH: Climb to 1200 then climbing right turn to 3000 on heading 330° and FUZ VORTAC R-303 to OBLON INT/FUZ 24 DME and hold.
------------------------	--------	--

ATIS <b>126.925</b>	LONE STAR APP CON <b>118.1 306.95</b>	ALLIANCE TOWER <b>135.15 257.9</b>	GND CON <b>132.65 306.2</b>	CLNC DEL <b>128.725</b>
------------------------	--	---------------------------------------	--------------------------------	----------------------------



ELEV 723	<b>D</b>	TDZE 723
----------	----------	----------



TDZ/CL Rwy 16L and 34R  
HIRL Rwy 16L-34R and 16R-34L  
REIL Rwy 16R and 34L

ARGUE I-UIPE (11) RADAR	WIGZU I-UIPE (5) RADAR	1200	3000	FUZ R-303	OBLON
4000	2400	↑	↗	hdg 330°	△
GS 3.00° TCH 55	2400				IM 767
	6 NM		5.1 NM		1049'
CATEGORY	A	B	C	D	
S-ILS 16L	CAT II RA 101/12		100 DA 823		
S-ILS 16L	CAT III		RVR 06		

## CATEGORY II & III ILS - SPECIAL AIRCREW & AIRCRAFT CERTIFICATION REQUIRED

SC-2, 23 JAN 2025 to 20 FEB 2025

SC-2, 23 JAN 2025 to 20 FEB 2025