

# JOE POOL SEVEN DEPARTURE

LONE STAR DEP CON  
118.1 306.95  
ATIS  
126.925  
CLNC DEL  
128.725  
GND CON  
132.65 306.2  
ALLIANCE TOWER  
135.15 257.9

RADAR and DME required.

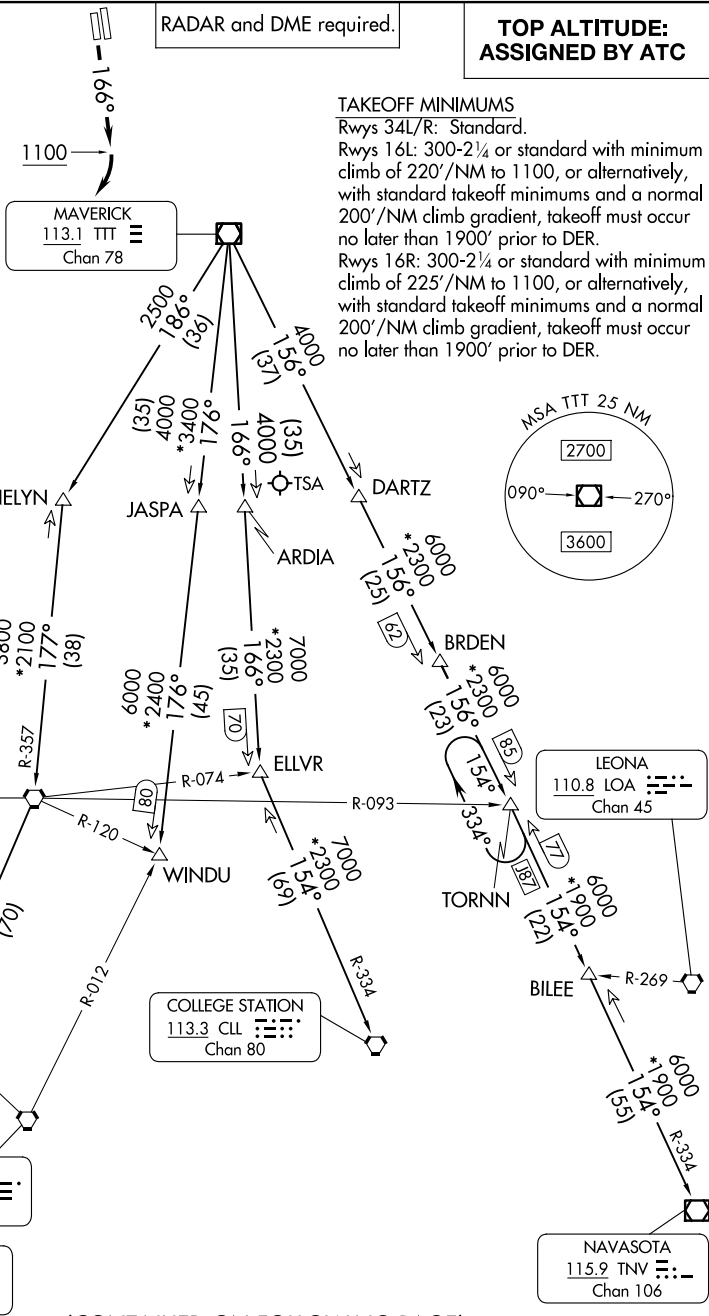
**TOP ALTITUDE:  
ASSIGNED BY ATC**

### TAKEOFF MINIMUMS

Rwys 34L/R: Standard.

Rwys 16L: 300-2¼ or standard with minimum climb of 220'/NM to 1100, or alternatively, with standard takeoff minimums and a normal 200'/NM climb gradient, takeoff must occur no later than 1900' prior to DER.

Rwys 16R: 300-2¼ or standard with minimum climb of 225'/NM to 1100, or alternatively, with standard takeoff minimums and a normal 200'/NM climb gradient, takeoff must occur no later than 1900' prior to DER.



SC-2, 23 JAN 2025 to 20 FEB 2025

SC-2, 23 JAN 2025 to 20 FEB 2025

(CONTINUED ON FOLLOWING PAGE)

NOTE: Chart not to scale.

# JOE POOL SEVEN DEPARTURE

# JOE POOL SEVEN DEPARTURE



## DEPARTURE ROUTE DESCRIPTION

TAKEOFF RUNWAY 16R: Climb on heading 166° to 1100 before turning right.

When entering controlled airspace, fly assigned heading for RADAR vectors to appropriate route. Maintain ATC assigned altitude.

COLLEGE STATION TRANSITION (JPOOL7.CLL): From over TTT VOR/DME on TTT R-166 to ELLVR, then on CLL R-334 to CLL VORTAC.

ELLVR TRANSITION (JPOOL7.ELLVR): From over TTT VOR/DME on TTT R-166 to ELLVR.

HOARY TRANSITION (JPOOL7.HOARY): From over TTT VOR/DME on TTT R-186 to NELYN, then on ACT R-357 to ACT VORTAC, then on ACT R-193 to HOARY.

NAVASOTA TRANSITION (JPOOL7.TNV): From over TTT VOR/DME on TTT R-156 to TORNN, then on TNV R-334 to TNV VOR/DME.

SAN ANTONIO TRANSITION (JPOOL7.SAT): From over TTT VOR/DME on TTT R-186 to NELYN, then on ACT R-357 to ACT VORTAC, then on ACT R-193 to HOARY, then on SAT R-024 to SAT VORTAC.

TORNNN TRANSITION (JPOOL7.TORNNN): From over TTT VOR/DME on TTT R-156 to TORNNN.

WACO TRANSITION (JPOOL7.ACT): From over TTT VOR/DME on TTT R-186 to NELYN, then on ACT R-357 to ACT VORTAC.

WINDU TRANSITION (JPOOL7.WINDU): From over TTT VOR/DME on TTT R-176 to WINDU.

NOTE: COLLEGE STATION Transition: For piston and turboprop aircraft destined to HOU, EFD, GLS, or LBX. Also for all other aircraft types destined to all other Houston terminal area airports except IAH, CXO, DWH, T78 or 6R3.

NOTE: ELLVR Transition: For turbojet aircraft destined to HOU, EFD, GLS, or LBX.

NOTE: SAN ANTONIO Transition: For aircraft overflying Centex and San Antonio.

NOTE: TORNNN Transition: Only for aircraft destined IAH, CXO, DWH, T78 or 6R3.

NOTE: WACO Transition: For aircraft inbound to Waco or Gray terminal area airports.

NOTE: WINDU Transition: For aircraft inbound to Austin or San Antonio terminal area.

SC-2, 23 JAN 2025 to 20 FEB 2025

SC-2, 23 JAN 2025 to 20 FEB 2025