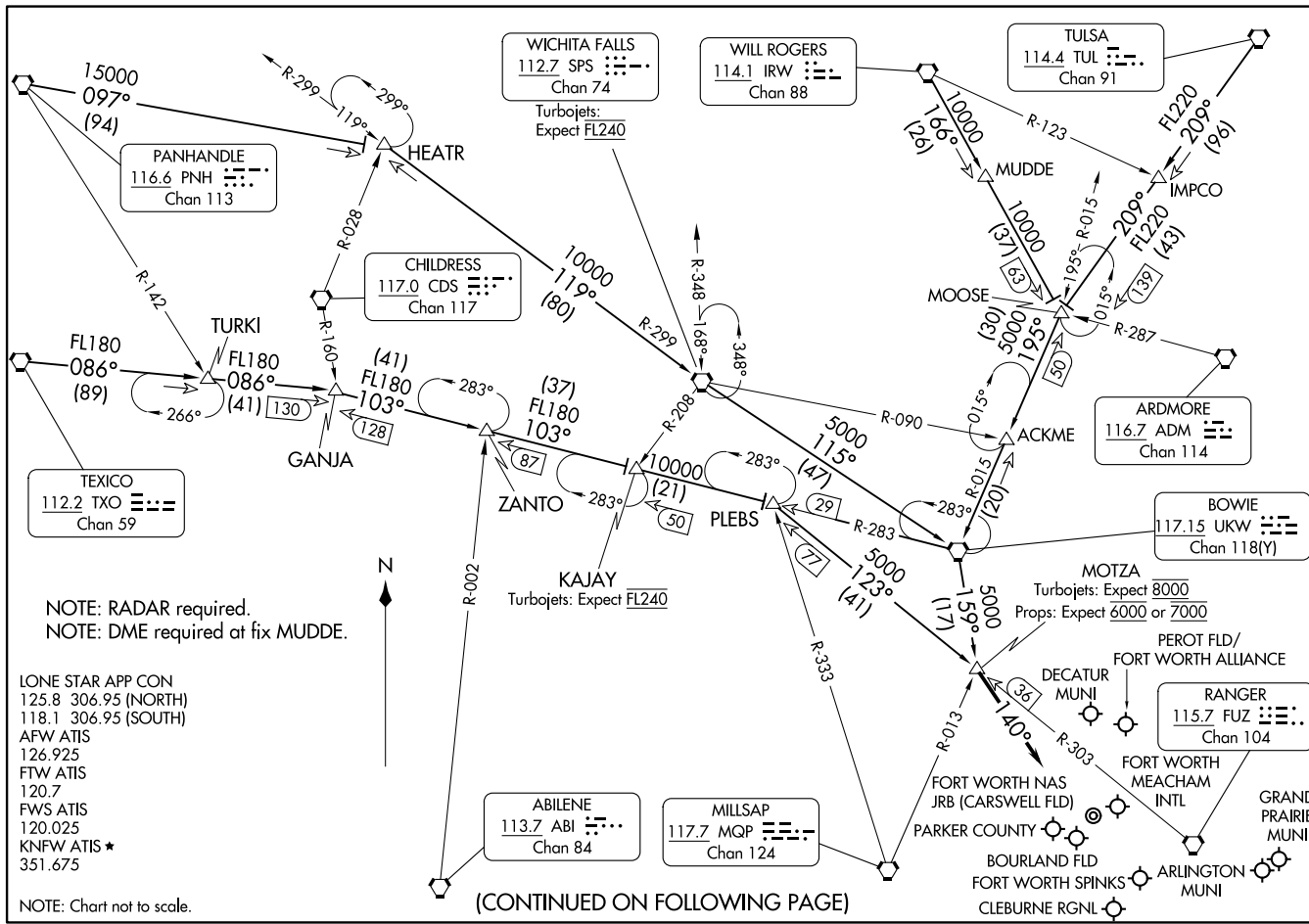


MOTZA ONE ARRIVAL
(MOTZA,MOTZA1) 17JUN21

(MOTZA,MOTZA1) 24305
MOTZA ONE ARRIVAL

AL-6918 (FAA)

FORT WORTH, TEXAS



(CONTINUED ON FOLLOWING PAGE)

FORT WORTH, TEXAS

ARRIVAL ROUTE DESCRIPTION

BOWIE TRANSITION (UKW.MOTZA1): From over UKW VORTAC on UKW R-159 to MOTZA. Thence

MUDDE TRANSITION (MUDDE.MOTZA1): From over MUDDE on IRW R-166 to MOOSE, then on UKW R-015 to UKW VORTAC, then on UKW R-159 to MOTZA. Thence

PANHANDLE TRANSITION (PNH.MOTZA1): From over PNH VORTAC on PNH R-097 to HEATR, then on SPS R-299 to SPS VORTAC, then on SPS R-115 and UKW R-299 to UKW VORTAC, then on UKW R-159 to MOTZA. Thence

TEXICO TRANSITION (TXO.MOTZA1): From over TXO VORTAC on TXO R-086 to GANJA, then on UKW R-283 to PLEBS, then on FUZ R-303 to MOTZA. Thence

TULSA TRANSITION (TUL.MOTZA1): From over TUL VORTAC on TUL R-209 to MOOSE, then on UKW R-015 to UKW VORTAC, then on UKW R-159 to MOTZA. Thence

TURKI TRANSITION (TURKI.MOTZA1): From over TURKI on TXO R-086 to GANJA, then on UKW R-283 to PLEBS, then on FUZ R-303 to MOTZA. Thence

WICHITA FALLS TRANSITION (SPS.MOTZA1): From over SPS VORTAC on SPS R-115 and UKW R-299 to UKW VORTAC, then on UKW R-159 to MOTZA. Thence

WILL ROGERS TRANSITION (IRW.MOTZA1): From over IRW VORTAC on IRW R-166 to MOOSE, then on UKW R-015 to UKW VORTAC, then on UKW R-159 to MOTZA. Thence

. . . . From over MOTZA heading 140° for vectors to final approach course.

SC-2, 23 JAN 2025 to 20 FEB 2025

SC-2, 23 JAN 2025 to 20 FEB 2025