

# NANDR TWO DEPARTURE (RNAV)

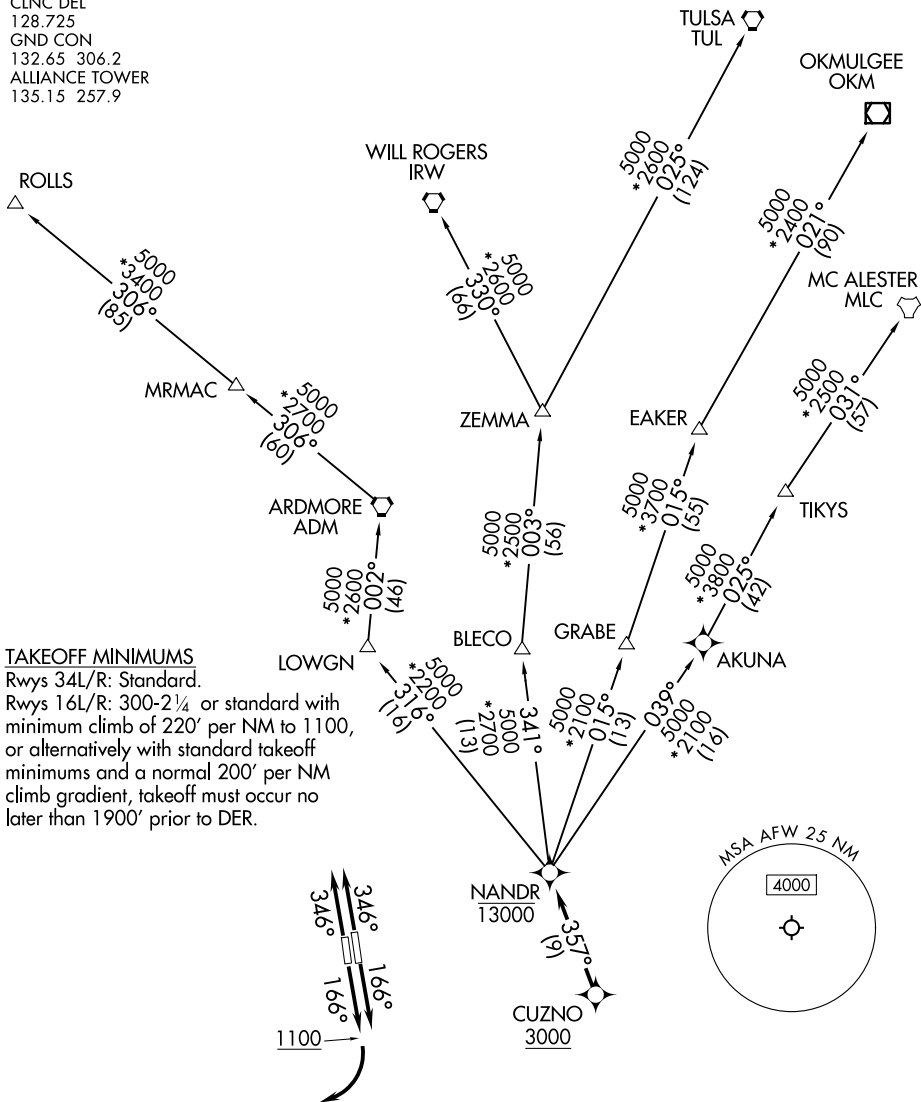
FORT WORTH, TEXAS

LONE STAR DEP CON  
118.1 306.95  
ATIS  
126.925  
CLNC DEL  
128.725  
GND CON  
132.65 306.2  
ALLIANCE TOWER  
135.15 257.9

RNAV 1 - DME/DME/IRU or GPS.

RADAR required.

**TOP ALTITUDE:  
ASSIGNED BY ATC**



SC-2, 23 JAN 2025 to 20 FEB 2025

SC-2, 23 JAN 2025 to 20 FEB 2025

NOTE: Chart not to scale.

(CONTINUED ON FOLLOWING PAGE)

# NANDR TWO DEPARTURE (RNAV)

(NANDR2.NANDR) 20APR23

FORT WORTH, TEXAS

PEROT FLD/FORT WORTH ALLIANCE (AFW)



DEPARTURE ROUTE DESCRIPTION

TAKEOFF RUNWAY 16L: Climb on heading 166° or as assigned by ATC, thence . . . .

TAKEOFF RUNWAY 16R: Climb on heading 166° to 1100 before turning right or as assigned by ATC, thence . . . .

TAKEOFF RUNWAYS 34L/R: Climb on heading 346° or as assigned by ATC, thence . . . .

. . . . expect RADAR vectors to cross CUZNO at or above 3000, then on track 357° to cross NANDR at or below 13000, then on assigned transition.

EAKER TRANSITION (NANDR2.EAKER)

MC ALESTER TRANSITION (NANDR2.MLC)

OKMULGEE TRANSITION (NANDR2.OKM)

ROLLS TRANSITION (NANDR2.ROLLS)

TULSA TRANSITION (NANDR2.TUL)

WILL ROGERS TRANSITION (NANDR2.IRW)

ZEMMA TRANSITION (NANDR2.ZEMMA)

SC-2, 23 JAN 2025 to 20 FEB 2025

SC-2, 23 JAN 2025 to 20 FEB 2025