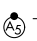


WAAS CH 82324 W34A	APP CRS 346°	Rwy Idg 11000 TDZE 681 Apt Elev 723
--	------------------------	--

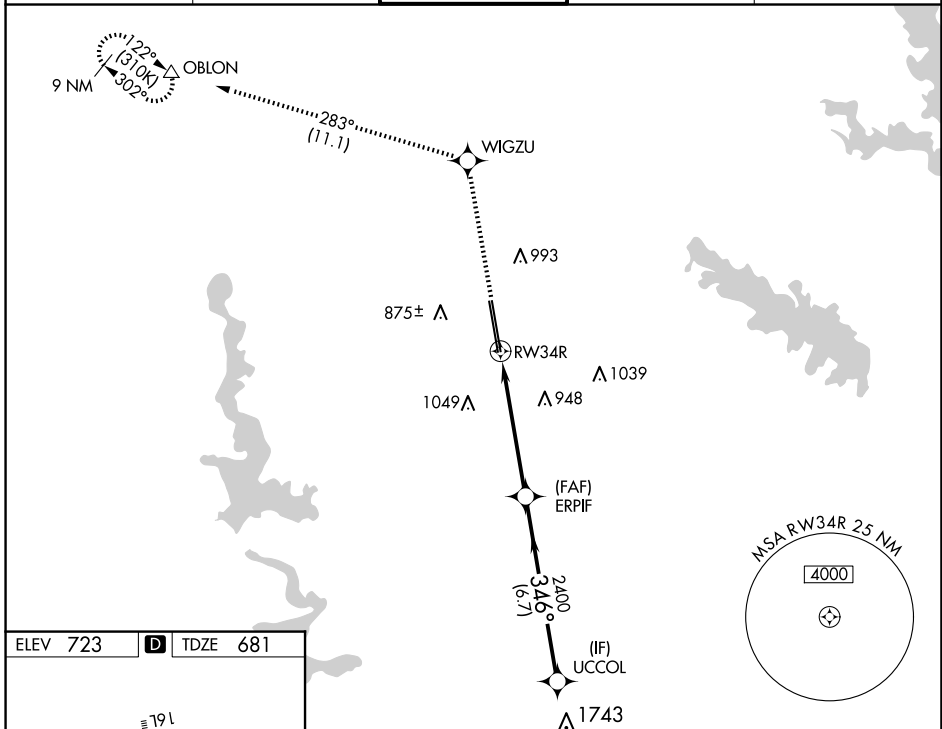
RNAV (GPS) RWY 34R

PEROT FLD/FORT WORTH ALLIANCE (AFW)

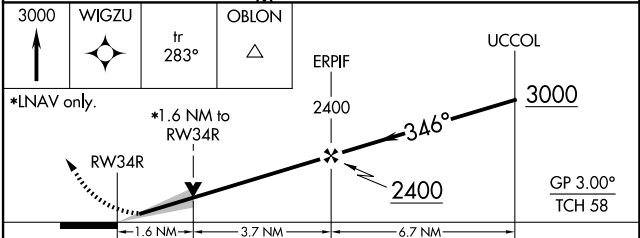
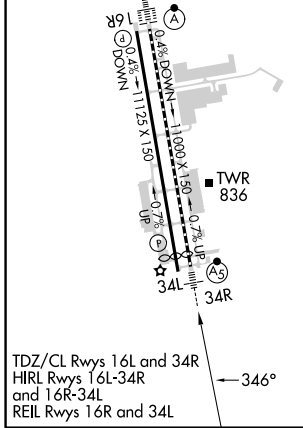
▼ For uncompensated Baro-VNAV systems, LNAV/VNAV NA below -8°C (18°F) or above 54°C (130°F). Circling NA east of Rwy 16L-34R. DME/DME RNP-0.3 NA.
 ▲ For inop ALS, increase LPV Cat E visibility to RVR 4000, increase LNAV/VNAV all Cats visibility to 2 SM, increase LNAV Cat E visibility to 1½ SM.

MALSR  MISSED APPROACH: Climb to 3000 direct WIGZU and on track 283° to OBLON and hold.

ATIS 126.925	LONE STAR APP CON 118.1 306.95	ALLIANCE TOWER 135.15 257.9	GND CON 132.65 306.2	CLNC DEL 128.725
------------------------	--	---------------------------------------	--------------------------------	----------------------------



ELEV 723	D	TDZE 681
----------	----------	----------



CATEGORY	A	B	C	D	E
LPV DA	881/18		200 (200-½)		
LNAV/VNAV DA	1437-1¾		756 (800-1¾)		
LNAV MDA	1240/24	559 (600-½)	1240/60	559 (600-1¼)	
C CIRCLING	1240-1 517 (600-1)	1320-1 597 (600-1)	1360-1¾ 637 (700-1¾)	1380-2 657 (700-2)	1380-2½ 657 (700-2½)

SC-2, 23 JAN 2025 to 20 FEB 2025

SC-2, 23 JAN 2025 to 20 FEB 2025