

# TRUUK TWO ARRIVAL (RNAV)

DALLAS-FORT WORTH, TEXAS

LONE STAR APP CON  
 118.1 306.95  
 AFW ATIS  
 126.925  
 FTW ATIS  
 120.7  
 FWS ATIS  
 120.025  
 KNFW ATIS\*  
 351.675

NOTE: RADAR required.  
 NOTE: RNAV 1.  
 NOTE: DME/DME/IRU or GPS required.

SASIE  
 VERTICAL NAVIGATION  
 PLANNING INFORMATION

TURBOJET NORTH FLOW:

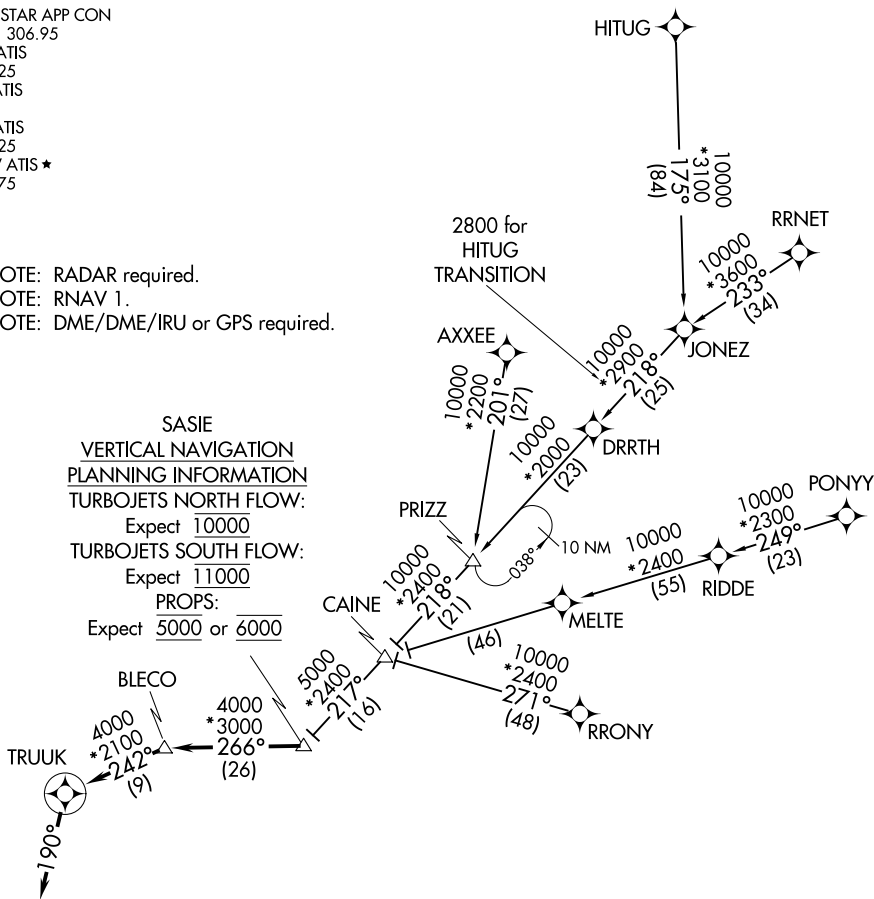
Expect 10000

TURBOJET SOUTH FLOW:

Expect 11000

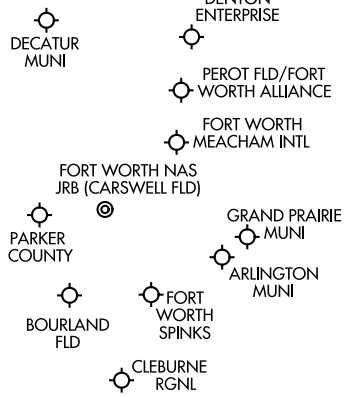
PROPS:

Expect 5000 or 6000



SC-2, 23 JAN 2025 to 20 FEB 2025

SC-2, 23 JAN 2025 to 20 FEB 2025



NOTE: Chart not to scale.

### ARRIVAL ROUTE DESCRIPTION

AXXEE TRANSITION (AXXEE.TRUUK2): (For aircraft filing FL230 and below).  
HITUG TRANSITION (HITUG.TRUUK2)  
PONY TRANSITION (PONY.TRUUK2)  
RRNET TRANSITION (RRNET.TRUUK2)  
RRONY TRANSITION (RRONY.TRUUK2): (For aircraft filing FL230 and below).

From SASIE on track 266° to BLECO, then on track 242° to TRUUK, then on track 190°. Expect RADAR vectors to final approach course.

# TRUUK TWO ARRIVAL (RNAV)

DALLAS-FORT WORTH, TEXAS