

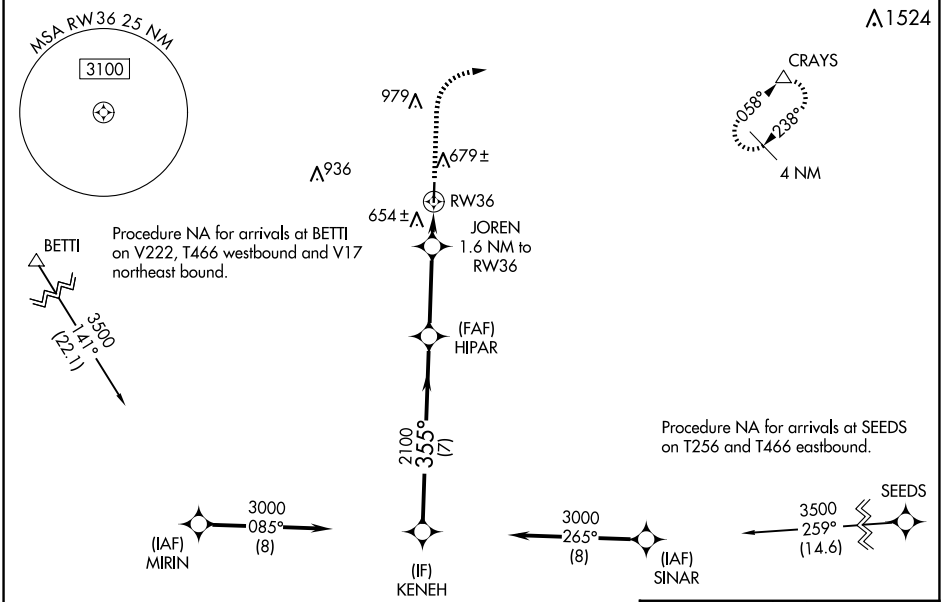
WAAS CH <b>53323</b> <b>W36A</b>	APP CRS <b>355°</b>	Rwy Idg TDZE Apt Elev	<b>4001</b> <b>530</b> <b>532</b>
--	------------------------	-----------------------------	---

# RNAV (GPS) RWY 36

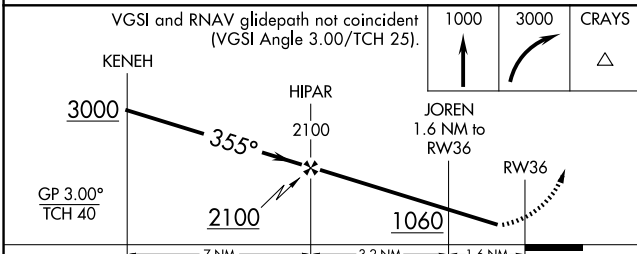
LOCKHART MUNI (5ØR)

RNP APCH - GPS.	MISSED APPROACH: Climb to 1000, then climbing right turn to 3000 direct CRAYS and hold.
<p><b>∇</b> Rwy 36 helicopter visibility reduction below ¼ NA. Baro-VNAV NA. Use San Marcos altimeter setting; when not received, use Austin-Bergstrom Intl altimeter setting; increase LPV DA to 830 feet; increase LNAV/VNAV DA to 880 feet; increase all MDAs 20 feet and visibility Cat C ½ SM.</p> <p><b>Δ</b> NA</p>	

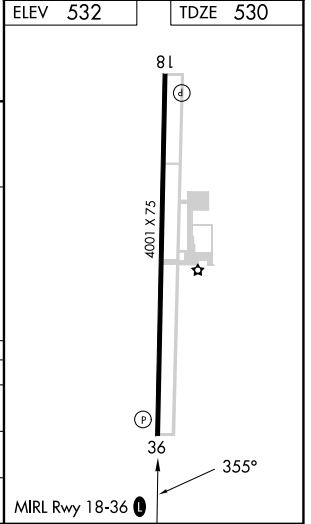
AUSTIN APP CON <b>120.875 270.25</b>	UNICOM <b>122.8 (CTAF) 0</b>
---	---------------------------------



ELEV <b>532</b>	TDZE <b>530</b>
-----------------	-----------------



CATEGORY	A	B	C	D
LPV DA	813-1	283 (300-1)		NA
LNAV/VNAV DA	863-1 ½	333 (400-1 ½)		NA
LNAV MDA	940-1	410 (500-1)	940-1 ½ 410 (500-1 ½)	NA



SC-3, 23 JAN 2025 to 20 FEB 2025

SC-3, 23 JAN 2025 to 20 FEB 2025