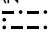
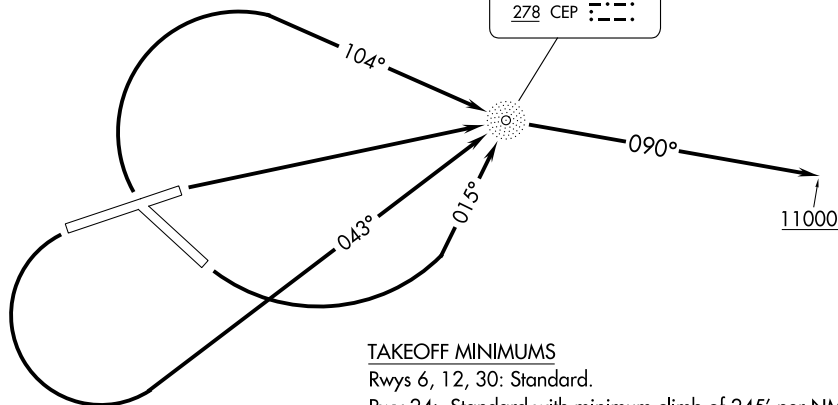


ALBUQUERQUE CENTER
132.65 257.6

CAPITAN
278 CEP 



TAKEOFF MINIMUMS

Rwys 6, 12, 30: Standard.

Rwy 24: Standard with minimum climb of 245' per NM to 8300 or 1200-3 for climb in visual conditions.

TAKEOFF OBSTACLE NOTES

- Rwy 12: Terrain, 9' from DER, 5' right of centerline, 6722' MSL.
Trees, beginning 61' from DER, 146' left of centerline, up to 6727' MSL.
Tree, 99' from DER, 125' right of centerline, 6725' MSL.
- Rwy 24: Tree, 648' from DER, 264' right of centerline, 11' AGL/6832' MSL.
Trees, beginning 747' from DER, 300' left of centerline, up to 15' AGL/6835' MSL.
Vehicle on road, 940' from DER, 39' left of centerline, up to 15' AGL/6854' MSL.
Pole, 4427' from DER, 942' left of centerline, 45' AGL/6925' MSL.
- Rwy 30: Sign, 47' from DER, 60' right of centerline, 6774' MSL.
Sign, 72' from DER, 197' left of centerline, up to 2' AGL/6779' MSL.
Vehicle on road, 436' from DER, 253' right of centerline, 15' AGL/6787' MSL.
Tree, 692' from DER, 179' left of centerline, 6796' MSL.
Building, tree, beginning 753' from DER, 308' left of centerline, up to 30' AGL/6808' MSL.
Pole, 1092' from DER, 433' left of centerline, 76' AGL/6845' MSL.
Pole, 1201' from DER, 633' left of centerline, 67' AGL/6847' MSL.
Pole, 1693' from DER, 908' left of centerline, 69' AGL/6853' MSL.

NOTE: Chart not to scale.

DEPARTURE ROUTE DESCRIPTION

- TAKEOFF RUNWAY 6:** Climb direct CEP NDB, then on bearing 090° from CEP NDB to 11000 before proceeding on course.
- TAKEOFF RUNWAY 12:** Climbing left turn to intercept course 015° to CEP NDB, then on bearing 090° from CEP NDB to 11000 before proceeding on course.
- TAKEOFF RUNWAY 24:** Climbing left turn to intercept course 043° to CEP NDB, then on bearing 090° from CEP NDB to 11000 before proceeding on course.
- TAKEOFF RUNWAY 30:** Climbing right turn to intercept course 104° to CEP NDB, then on bearing 090° from CEP NDB to 11000 before proceeding on course.
- VCOA RUNWAY 24:** Obtain ATC approval for VCOA when requesting IFR clearance. Climb in visual conditions to cross Sierra Blanca Rgnl at or above 7900 then direct CEP NDB, then on bearing 090° from CEP NDB to 11000 before proceeding on course.