

WAAS CH <b>53420</b> <b>W24A</b>	APP CRS <b>241°</b>	Rwy ldg TDZE Apt Elev	<b>8120</b> <b>6771</b> <b>6814</b>
--	------------------------	-----------------------------	---

# RNAV (GPS) RWY 24

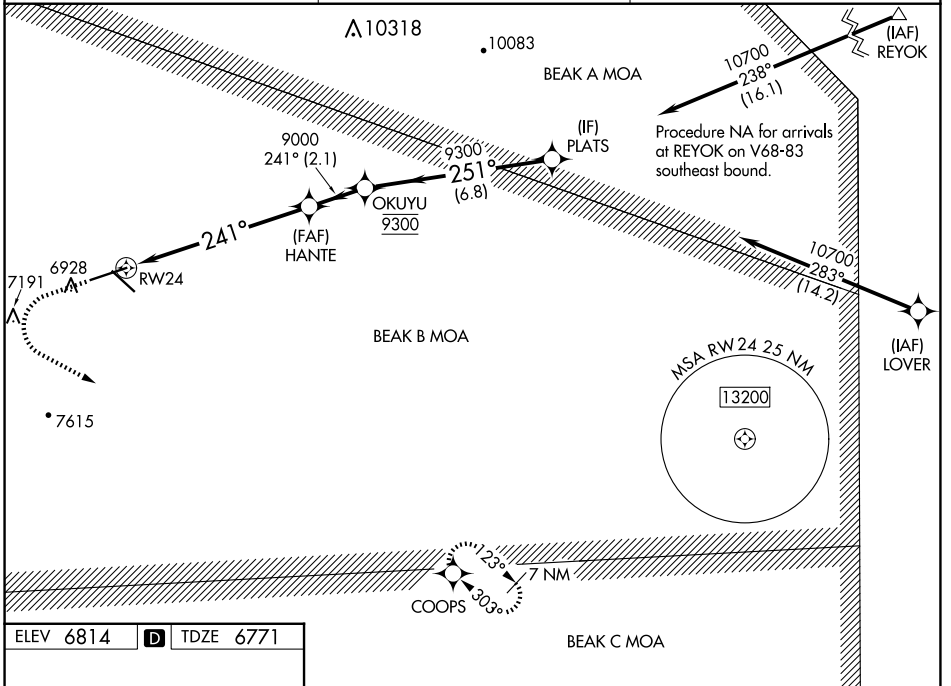
SIERRA BLANCA RGNL (S.R.R.)

RNP APCH - GPS.

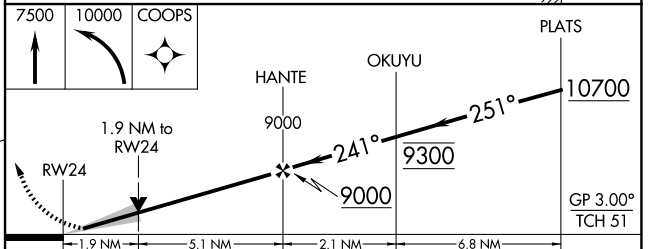
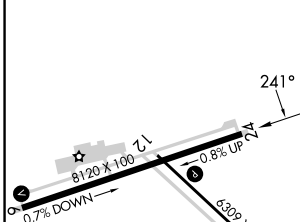
**⚠** When local altimeter setting not received, procedure NA.  
**⚠** For uncompensated Baro-VNAV systems, LNAV/VNAV NA below -28°C or above 54°C. Circling Rwy 12 NA at night.

MISSED APPROACH: Climb to 7500 then climbing left turn to 10000 direct COOPS and hold.

AWOS-3 <b>126.475</b>	ALBUQUERQUE CENTER <b>132.65 257.6</b>	UNICOM <b>122.8 (CTAF) 0</b>
--------------------------	---	---------------------------------



ELEV 6814	<b>D</b>	TDZE 6771
-----------	----------	-----------



CATEGORY	A	B	C	D
LPV DA	6971-3/4		200 (200-3/4)	
LNAV/VNAV DA	7220-1 3/8		449 (500-1 3/8)	
LNAV MDA	7380-1	609 (600-1)	7380-1 3/4	609 (600-1 3/4)
CIRCLING	7380-1	566 (600-1)	7600-2 1/4 786 (800-2 1/4)	7860-3 1046 (1100-3)

SW-1, 23 JAN 2025 to 20 FEB 2025

SW-1, 23 JAN 2025 to 20 FEB 2025