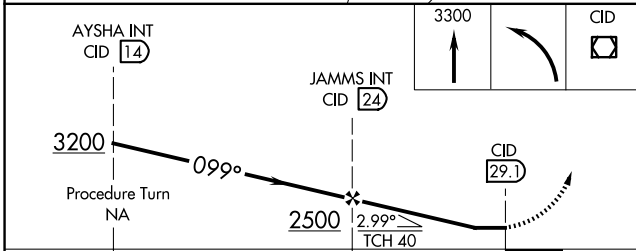
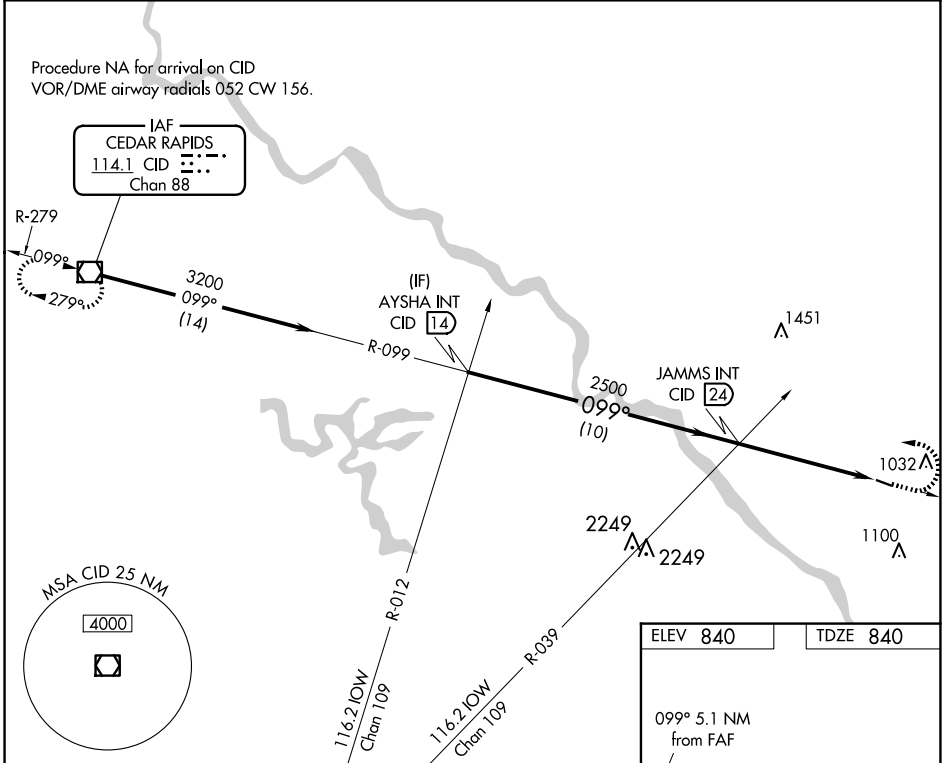


VOR/DME CID <b>114.1</b> Chan <b>88</b>	APP CRS <b>099°</b>	Rwy Idg TDZE <b>840</b> Apt Elev <b>840</b>
---	------------------------	---

# VOR RWY 11

MATHEWS MEML (8C4)

<p><b>▼</b> Use Iowa City altimeter setting, when not received</p> <p><b>▲</b> NA use Cedar Rapids altimeter setting.</p>	<p>MISSED APPROACH: Climb to 3300 then left turn direct CID VOR/DME and hold.</p>
<p>CEDAR RAPIDS APP CON ★</p> <p><b>119.7 266.8</b></p>	<p>CTAF</p> <p><b>122.9</b></p>



ELEV 840	TDZE 840
099° 5.1 NM from FAF	
3000 x 60	
MIRL Rwy 11-29 REIL Rwy 11	
FAF to MAP 5.1 NM	
Knots	60 90 120 150 180
Min:Sec	5:06 3:24 2:33 2:02 1:42

CATEGORY	A	B	C	D
S-11	1400-1 560 (600-1)	1400-1¼ 560 (600-1¼)		NA
CIRCLING	1460-1 620 (700-1)	1460-1¼ 620 (700-1¼)		NA

NC-3, 23 JAN 2025 to 20 FEB 2025

NC-3, 23 JAN 2025 to 20 FEB 2025