

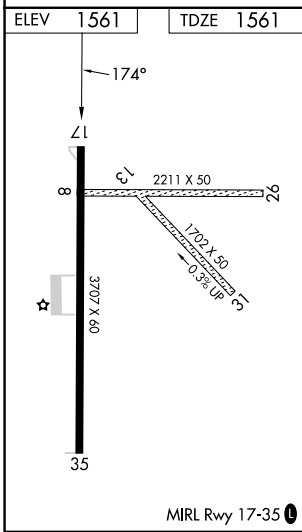
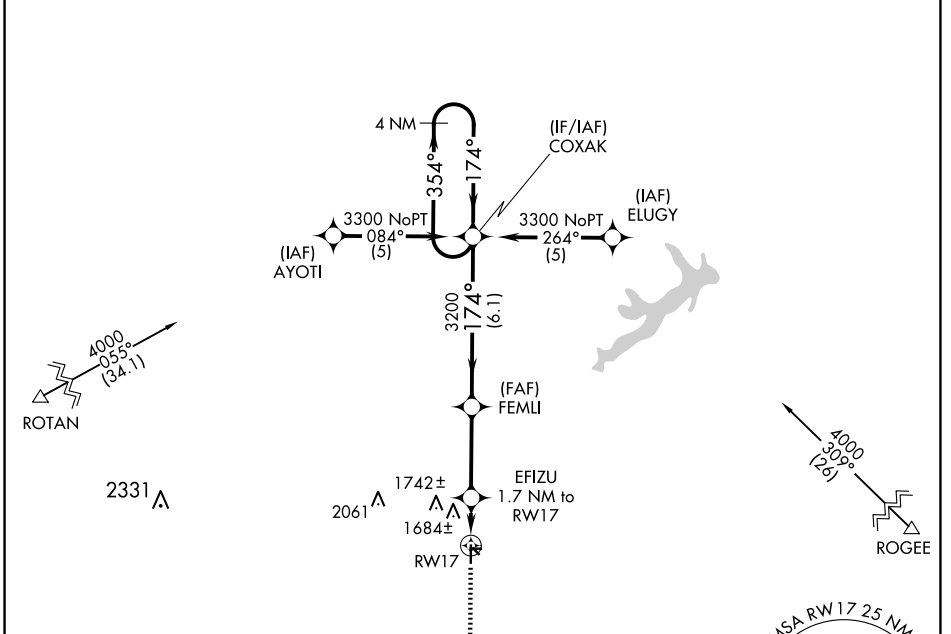
APP CRS	Rwy Idg	<b>3707</b>
<b>174°</b>	TDZE	<b>1561</b>
	Apt Elev	<b>1561</b>

# RNAV (GPS) RWY 17

ARLEDGE FLD (F56)

RNP APCH-GPS.	Procedure NA at night. Use Abilene Rgnl altimeter setting; when not received use Breckenridge altimeter setting and increase all MDAs 40 feet. Rwy 17 helicopter visibility reduction below	MISSED APPROACH: Climb to 3300 direct HINTA and hold.
NA	1 SM NA. Circling NA to Rwys 8/26 and 13/31.	

ABILENE APP CON	UNICOM
<b>127.2 282.3</b>	<b>122.8 (CTAF) 0</b>



ELEV	1561	TDZE	1561
3300	HINTA	FEMLI	COXAK
↑	★		4 NM Holding Pattern
EFIZU	2120	3200	3300
1.7 NM to RWY 17	≤ 3.04° TCH 40	174°	174°
1.7 NM	3.3 NM	6.1 NM	
CATEGORY	A	B	C
LNAV MDA	2040-1	479 (500-1)	2040-1 <sup>3</sup> / <sub>8</sub> 479 (500-1 <sup>3</sup> / <sub>8</sub> )
CIRCLING	2100-1 539 (600-1)	2200-1 639 (700-1)	2220-1 <sup>3</sup> / <sub>4</sub> 659 (700-1 <sup>3</sup> / <sub>4</sub> )

SC-2, 23 JAN 2025 to 20 FEB 2025

SC-2, 23 JAN 2025 to 20 FEB 2025