

APP CRS	Rwy Idg	6101
181°	TDZE	5024
	Apt Elev	5024

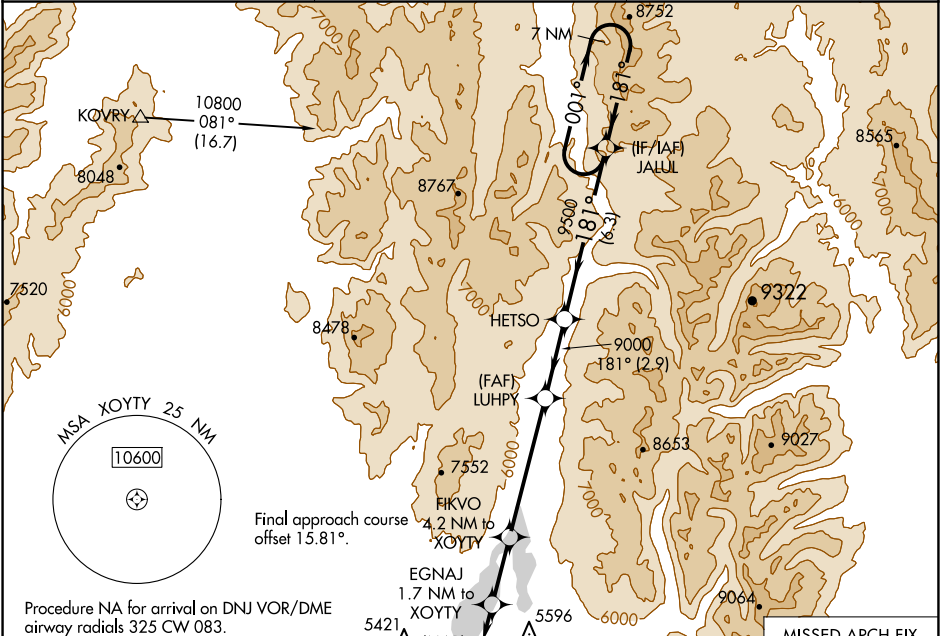
RNAV (GPS) RWY 16

MC CALL MUNI (MYL)

▼ Rwy 16 helicopter visibility reduction below 1 SM NA.
▲ DME/DME RNP-0.3 NA.
☄ -20°C Straight-in Rwy 16 NA at night, Circling Rwy 16 NA at night.

MISSED APPROACH: Climb to 11700 direct UDABE and on track 158° to PEPUC and hold, continue climb-in-hold to 11700.

ASOS 119.925	SALT LAKE CENTER 128.05 306.95	UNICOM 122.8 (CTAF) 📻
------------------------	--	--



NW-1, 23 JAN 2025 to 20 FEB 2025

NW-1, 23 JAN 2025 to 20 FEB 2025

Procedure NA for arrival on DNJ VOR/DME airway radials 325 CW 083.

ELEV 5024	TDZE 5024
-----------	-----------

MIRL Rwy 16-34 **📻**
 REIL Rws 16 and 34 **📻**

11700 UDABE	tr 158°	PEPUC	Visual Segment - Obstacles.	JALUL	7 NM Holding Pattern
EGNAJ 1.7 NM to XOYTY		FIKVO 4.2 NM to XOYTY	LUHPY	HETSO	001° → 10800
XOYTY	5940	6940	9000	9500	← 181°
0.5	1.7	2.5 NM	5.1 NM	2.9 NM	6.3 NM
CATEGORY	A	B	C	D	
LNAV MDA	5520-1	496 (500-1)	5520-1 $\frac{3}{8}$ 496 (500-1 $\frac{3}{8}$)	NA	
C CIRCLING	5940-1 $\frac{1}{4}$	916 (1000-1 $\frac{1}{4}$)	6140-3 1116 (1200-3)	NA	