

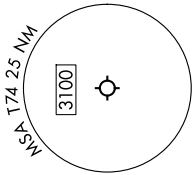
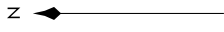
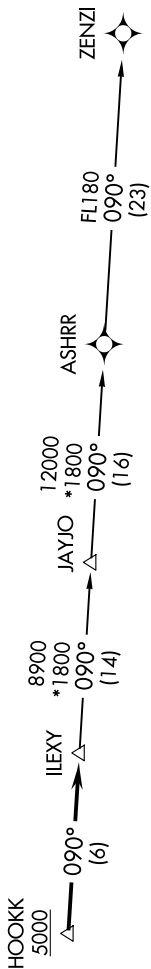
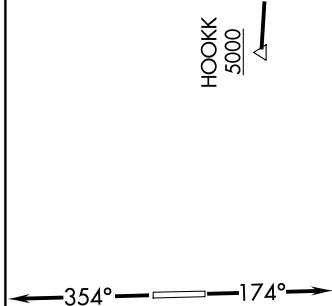
UNICOM (CTAF)
172.225
AUSTIN DEPT CON
127.225 - 317.65

**TOP ALTITUDE:
ASSIGNED BY ATC**

RNAV 1 - DME/DME/IRU or GPS.
RADAR required.

TAKEOFF MINIMUMS:

Rwys 17, 35: Standard.



NOTE: Houston terminal area arrivals expect routing from ILEXY.
 NOTE: JAYJO transition to join V306 only.
 NOTE: Aircraft not destined the Houston terminal area or joining V306 must file the ZENZI transition.

NOTE: Chart not to scale.

DEPARTURE ROUTE DESCRIPTION

TAKEOFF RUNWAY 17: Climb on heading 174° or as assigned by ATC for vectors to cross HOOKK at or above 5000, thence. . . .
TAKEOFF RUNWAY 35: Climb on heading 354° or as assigned by ATC for vectors to cross HOOKK at or above 5000, thence. . . .
 . . . on track 090° to ILEXY, then on transition. Maintain altitude assigned by ATC. Expect filed altitude 10 minutes after departure.

JAYJO TRANSITION (ILEXY4.JAYJO)
ZENZI TRANSITION (ILEXY4.ZENZI)