

(COOLI6.COOLI) 19227

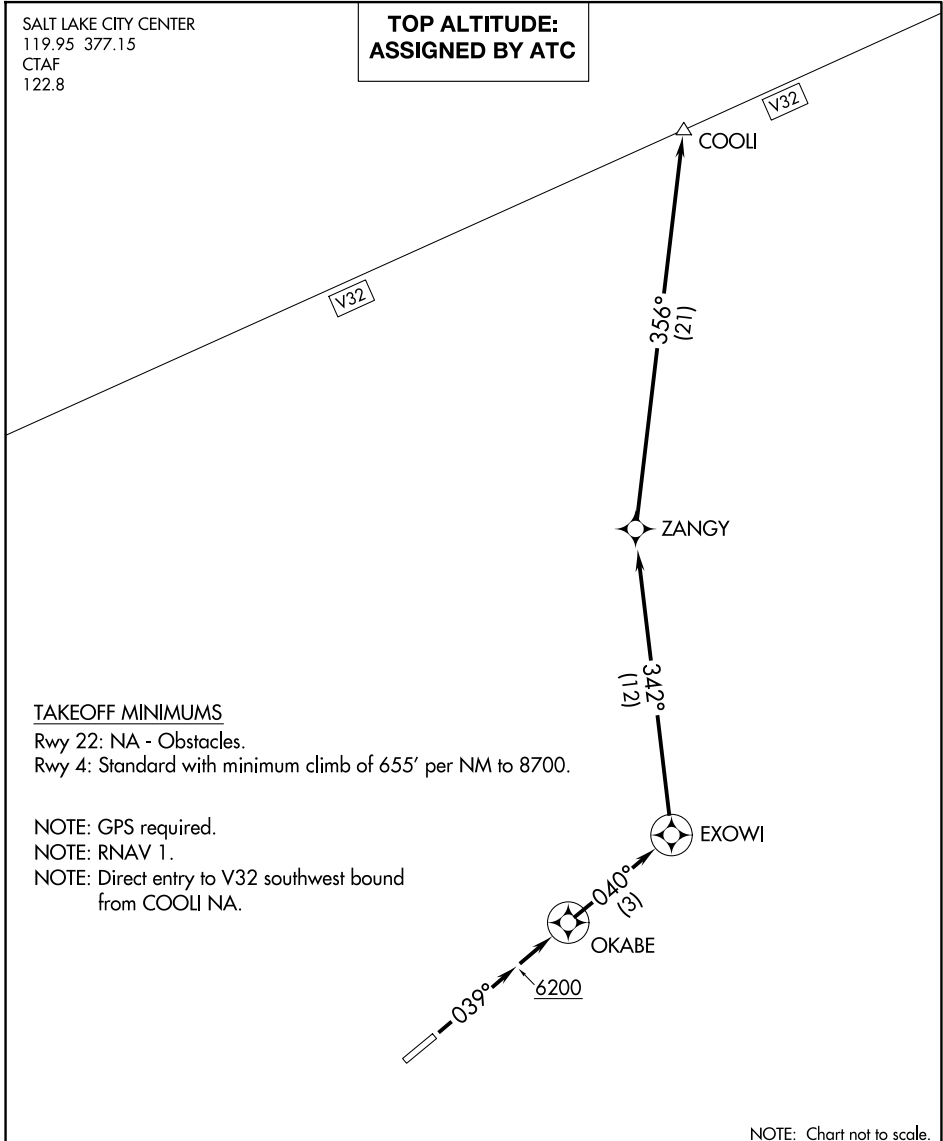
COOLI SIX DEPARTURE (RNAV)

AL-6969 (FAA)

HEBER VALLEY (HCR)
HEBER, UTAH

SALT LAKE CITY CENTER
119.95 377.15
CTAF
122.8

**TOP ALTITUDE:
ASSIGNED BY ATC**



TAKEOFF MINIMUMS

Rwy 22: NA - Obstacles.

Rwy 4: Standard with minimum climb of 655' per NM to 8700.

NOTE: GPS required.

NOTE: RNAV 1.

NOTE: Direct entry to V32 southwest bound from COOLI NA.

SW-4, 23 JAN 2025 to 20 FEB 2025

SW-4, 23 JAN 2025 to 20 FEB 2025



DEPARTURE ROUTE DESCRIPTION

TAKEOFF RUNWAY 4: Climb heading 039° to 6200, then climb to 12000 (or maintain ATC assigned altitude) direct OKABE and on track 040° to EXOWI, then on depicted route to COOLI.

COOLI SIX DEPARTURE (RNAV)
(COOLI6.COOLI) 15AUG19

HEBER, UTAH
HEBER VALLEY (HCR)