

WAAS CH 58244 W36A	APP CRS 360°	Rwy Idg TDZE Apt Elev	6001 1301 1316
--	------------------------	-----------------------------	---

RNAV (GPS) RWY 36


MONETT RGNL (HFJ)

RNP APCH - GPS.

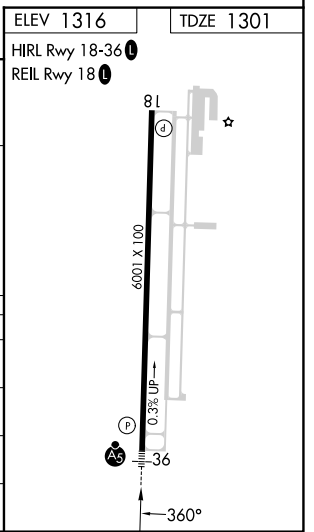
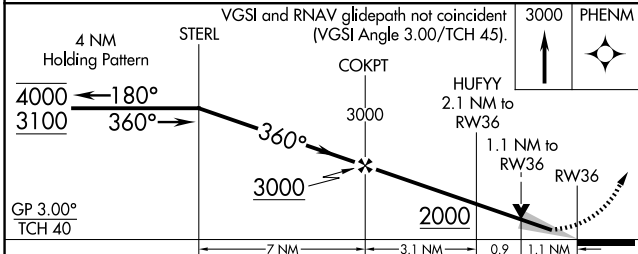
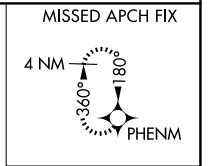
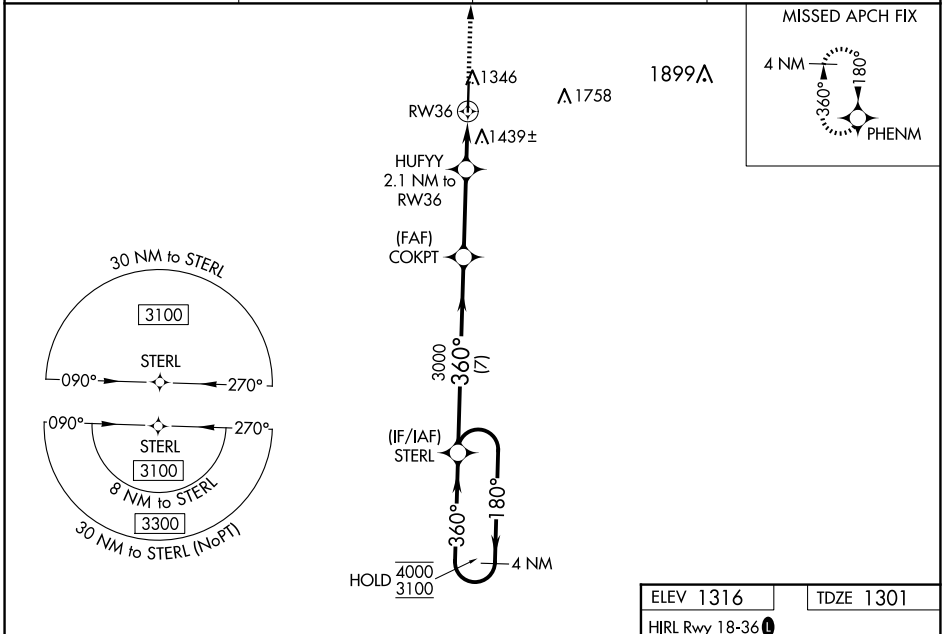
⚠ Baro-VNAV and VDP NA when using Joplin altimeter setting. For uncompensated Baro-VNAV systems, LNAV/VNAV NA below -17°C or above 54°C. When local altimeter setting not received, use Joplin altimeter setting: increase LPV DA to 1613 feet; increase LNAV/VNAV DA to 1862 feet and all visibilities $\frac{3}{8}$ SM; increase all MDAs 120 feet and LNAV visibility Cats C and D $\frac{3}{8}$ SM, and Circling visibility Cat C/D $\frac{1}{2}$ SM.

MALSRL

MISSED APPROACH:
Climb to 3000 direct PHENM and hold.



AWOS-3 118.275	SPRINGFIELD APP CON 124.95 318.2	CLNC DEL 121.85	UNICOM 123.075 (CTAF) U
--------------------------	--	---------------------------	--



CATEGORY	A	B	C	D
LPV DA		1501- $\frac{1}{2}$	200 (200- $\frac{1}{2}$)	
LNAV/VNAV DA		1750- $\frac{7}{8}$	449 (500- $\frac{7}{8}$)	
LNAV MDA	1700- $\frac{1}{2}$	399 (400- $\frac{1}{2}$)	1700- $\frac{5}{8}$	399 (400- $\frac{5}{8}$)
C CIRCLING	1760-1 444 (500-1)	1900-1 584 (600-1)	1900-1 $\frac{1}{2}$ 584 (600-1 $\frac{1}{2}$)	2060-2 $\frac{1}{2}$ 744 (800-2 $\frac{1}{2}$)

NC-3, 23 JAN 2025 to 20 FEB 2025

NC-3, 23 JAN 2025 to 20 FEB 2025