

APP CRS	Rwy Idg	N/A
328°	TDZE	N/A
	Apt Elev	30

RNAV (GPS)-A

LAUREL (NØ6)

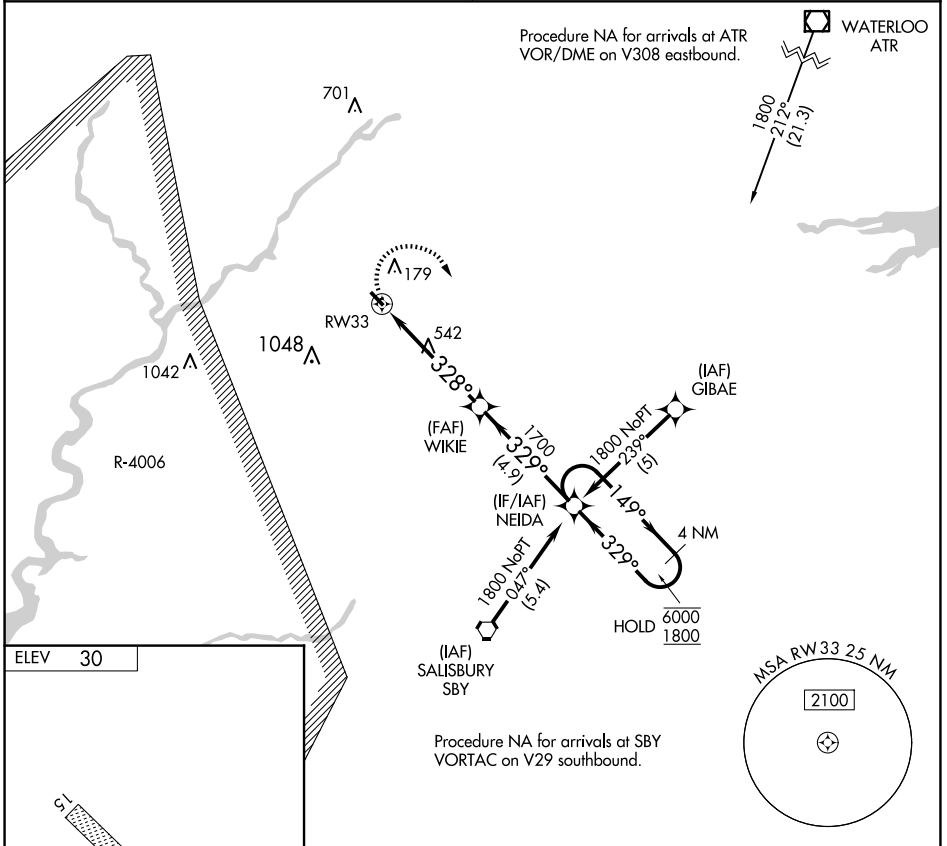
RNP APCH.

▼ Procedure NA at night. Use Salisbury altimeter setting; when not received, use Georgetown altimeter setting.

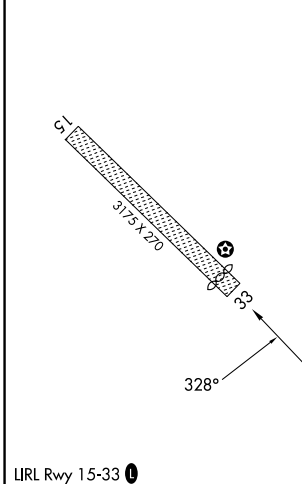
MISSED APPROACH: Climbing right turn to 1800 direct NEIDA and hold.

PATUXENT APP CON*
127.95 314.0

UNICOM
122.8 (CTAF) 0



ELEV	30
------	----



1800	NEIDA	Visual Segment - Obstacles.	4 NM Holding Pattern
		NEIDA	
		WIKIE	
		RW33	
		1700	
		328°	
		329°	
		149°	
		6000	
		1800	
		5.1 NM	4.9 NM
CATEGORY	A	B	C D
CIRCLING	880-1¼	850 (900-1¼)	NA

NE-3, 23 JAN 2025 to 20 FEB 2025

NE-3, 23 JAN 2025 to 20 FEB 2025