

|  |                        |   |
|--|------------------------|---|
| WAAS<br>CH <b>72722</b><br><b>W17A</b> | APP CRS<br><b>167°</b> | Rwy Idg <b>3799</b><br>TDZE <b>225</b><br>Apt Elev <b>225</b> |
|--|------------------------|---|

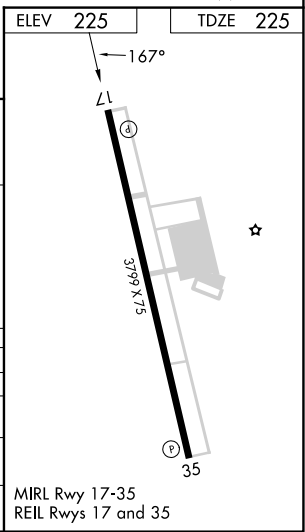
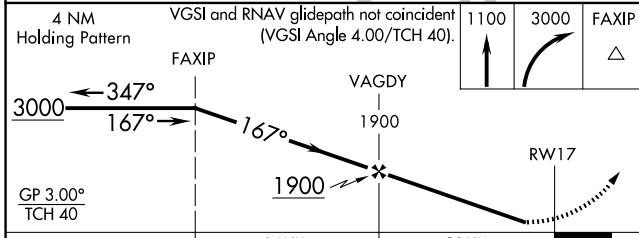
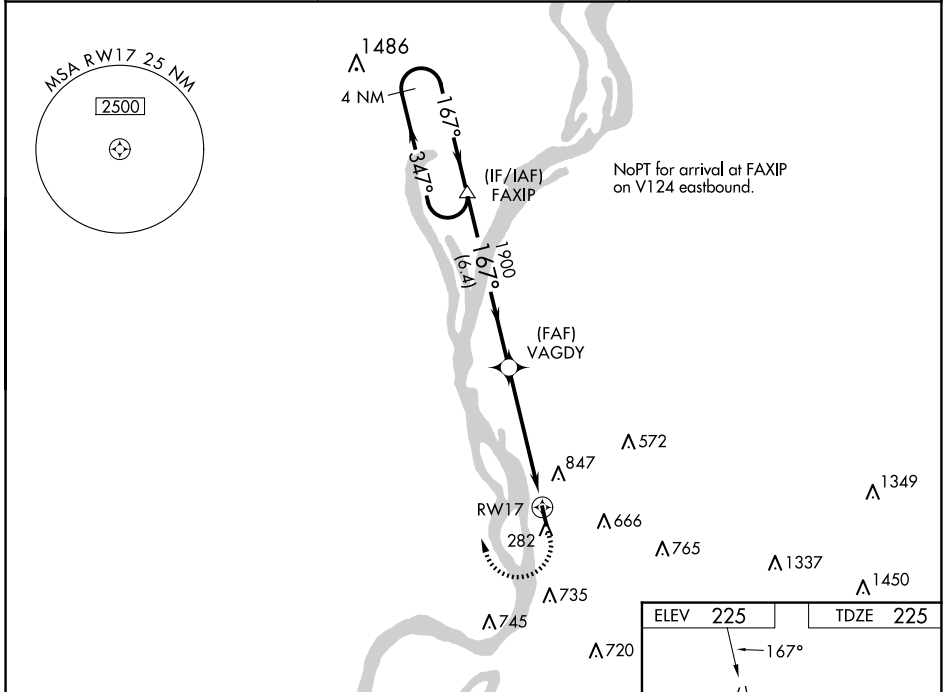
# RNAV (GPS) RWY 17

GENERAL DEWITT SPAIN (M01)

▼ Baro-VNAV NA when using Memphis Intl altimeter setting. For uncompensated Baro-VNAV systems, LNAV/VNAV NA below -15°C (5°F) or above 54°C (130°F).  
 ▲ NA DME/DME RNP-0.3 NA. When local altimeter setting not received, use Memphis Intl altimeter setting and increase all DA and MDA 40 feet and increase LNAV/VNAV visibility all Cats ¼ mile. Circling Rwy 35 NA at night. Rwy 17, helicopter visibility reduction below ¾ SM NA. Rwy 35, helicopter visibility reduction below 1 SM NA.

MISSED APPROACH:  
 Climb to 1100 then climbing right turn to 3000 direct FAXIP and hold.

|                           |                                       |                               |
|---------------------------|---------------------------------------|-------------------------------|
| AWOS-3PT<br><b>118.35</b> | MEMPHIS APP CON<br><b>119.1 291.6</b> | UNICOM<br><b>122.7 (CTAF)</b> |
|---------------------------|---------------------------------------|-------------------------------|



| CATEGORY     | A                        | B                        | C                       | D  |
|--------------|--------------------------|--------------------------|-------------------------|----|
| LPV DA       | 475-1                    | 250 (300-1)              |                         | NA |
| LNAV/VNAV DA | 1016-3                   | 791 (800-3)              |                         | NA |
| LNAV MDA     | 1020-1<br>795 (800-1)    | 1020-1¼<br>795 (800-1¼)  | 1020-2½<br>795 (800-2½) | NA |
| CIRCLING     | 1200-1¼<br>975 (1000-1¼) | 1200-1½<br>975 (1000-1½) | 1200-3<br>975 (1000-3)  | NA |

SE-1, 23 JAN 2025 to 20 FEB 2025

SE-1, 23 JAN 2025 to 20 FEB 2025