

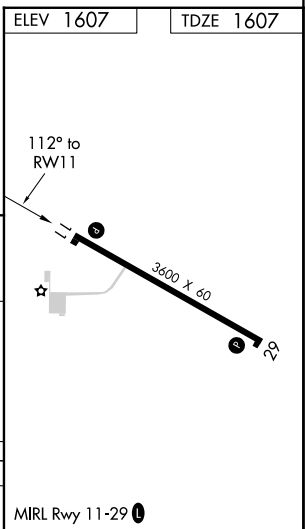
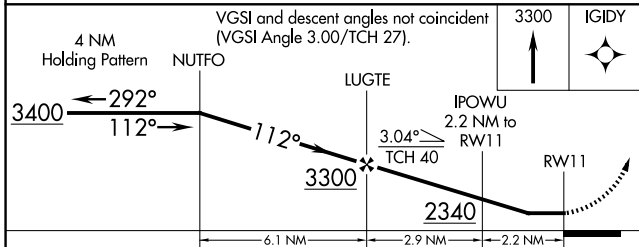
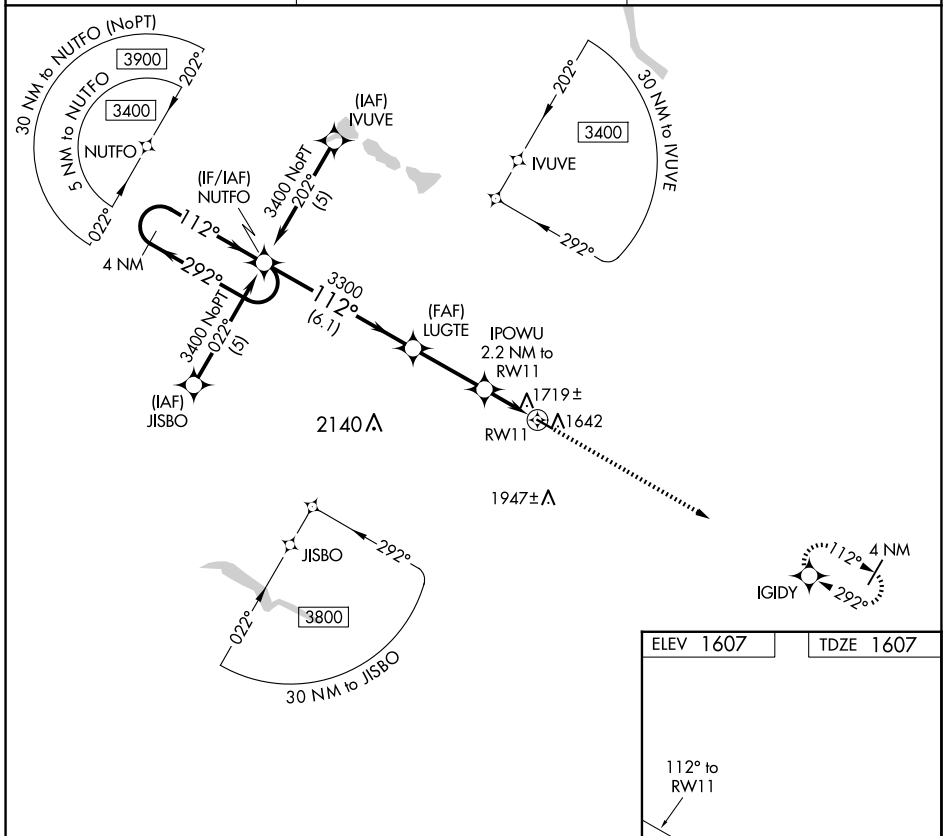
APP CRS	Rwy Idg	<b>3600</b>
<b>112°</b>	TDZE	<b>1607</b>
	Apt Elev	<b>1607</b>

# RNAV (GPS) RWY 11

HARVEY MUNI (5H4)

RNP APCH.	Procedure NA at night. Rwy 11 helicopter visibility reduction below 1 SM NA. When local altimeter setting not received; use Devil's Lake altimeter setting and increase all MDA 140 feet and LNAV Cat C visibility 1/2 SM.	MISSED APPROACH: Climb to 3300 direct IGIDY and hold.
-----------	--	---

AWOS-3 <b>118.825</b>	MINNEAPOLIS CENTER <b>135.25 256.7</b>	UNICOM <b>122.8 (CTAF) 1</b>
--------------------------	---	---------------------------------



CATEGORY	A	B	C	D
LNAV MDA	1980-1	373 (400-1)		NA

NC-1, 23 JAN 2025 to 20 FEB 2025

NC-1, 23 JAN 2025 to 20 FEB 2025