

NESS CITY, KANSAS

AL-9052 (FAA)

23110

WAAS CH 77944 W17A	APP CRS 172°	Rwy Idg TDZE 2322 Apt Elev 2322	4000
--	------------------------	---	-------------

RNAV (GPS) RWY 17

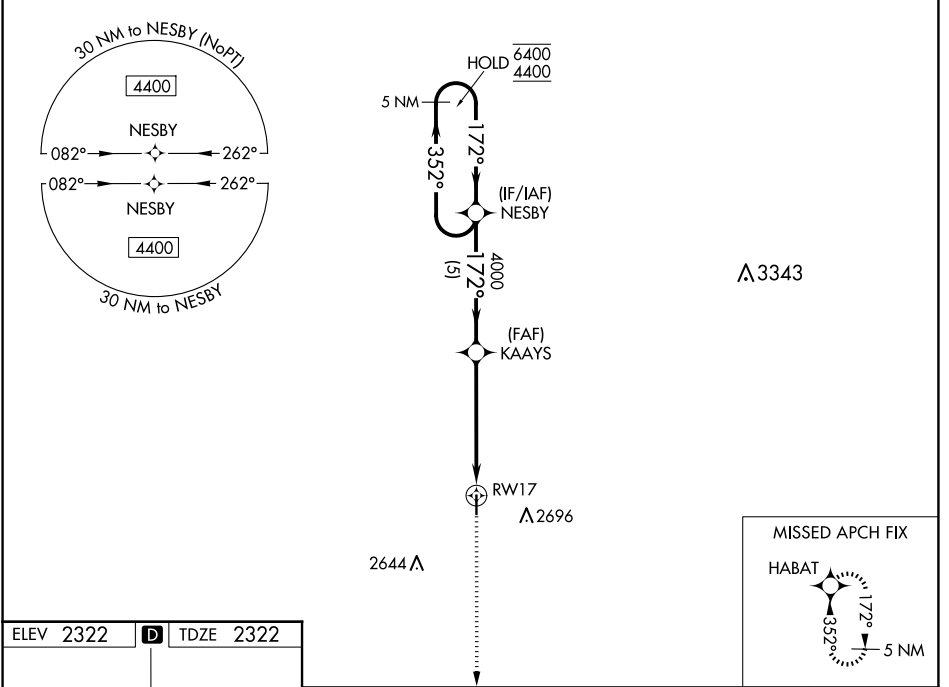
NESS CITY MUNI (48K)

RNP APCH - GPS.

⚠ NA Baro-VNAV NA. Use Hays Rgnl altimeter setting, when not received, use Hill City altimeter setting and increase LPV DA to 2659 feet, increase LNAV/VNAV DA to 2758 feet, and increase all MDAs 20 feet.

MISSED APPROACH: Climb to 4400 direct HABAT and hold.

HYS AWOS-3PT 125.525	KANSAS CITY CENTER 124.4 322.4	CTAF 122.90
--------------------------------	--	-----------------------



ELEV 2322	D	TDZE 2322
-----------	----------	-----------

172°

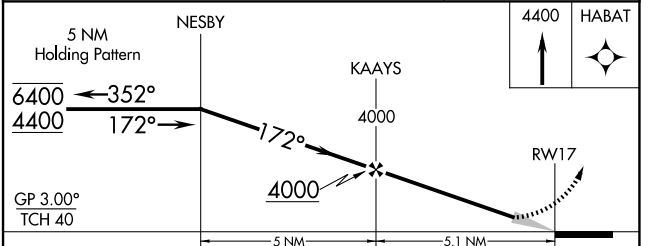
41

4000 X 60 ± 0.9% UP

35

MIRL Rwy 17-35

REIL Rwys 17 and 35



CATEGORY	A	B	C	D
LPV DA	2653-1	331 (400-1)		NA
LNAV/VNAV DA	2752-1¼	430 (500-1¼)		NA
LNAV MDA	3080-1 758 (800-1)	3080-1¼ 758 (800-1¼)		NA
CIRCLING	3080-1 758 (800-1)	3140-1¼ 818 (900-1¼)		NA

NESS CITY, KANSAS
Orig 20APR23

38°28'N-99°55'W

NESS CITY MUNI (48K) RNAV (GPS) RWY 17

NC-2, 23 JAN 2025 to 20 FEB 2025

NC-2, 23 JAN 2025 to 20 FEB 2025