

WAAS CH <b>53746</b> <b>W13A</b>	APP CRS <b>132°</b>	Rwy Idg TDZE Apt Elev	<b>5600</b> <b>4234</b> <b>4234</b>
--	------------------------	-----------------------------	---

# RNAV (GPS) RWY 13

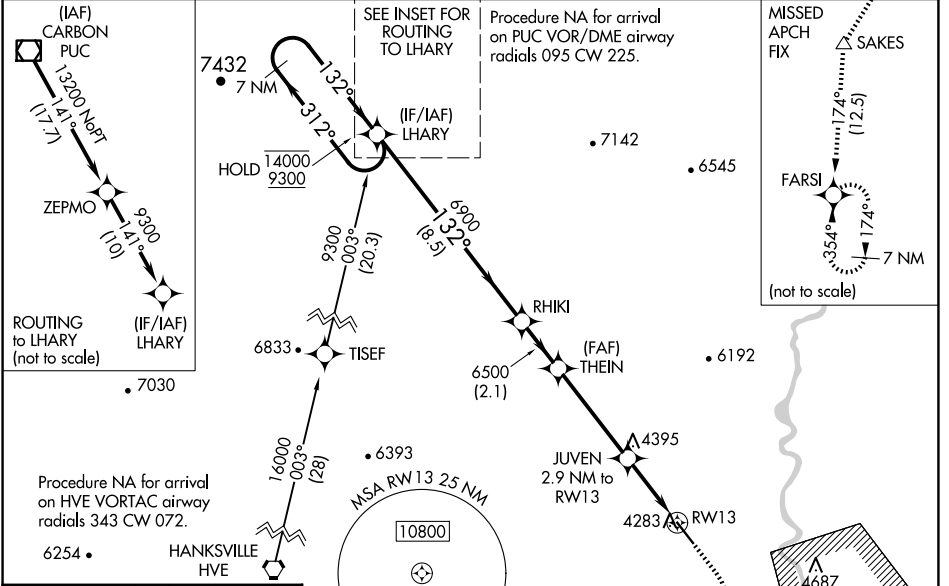
GREEN RIVER MUNI (U34)

RNP APCH - GPS.

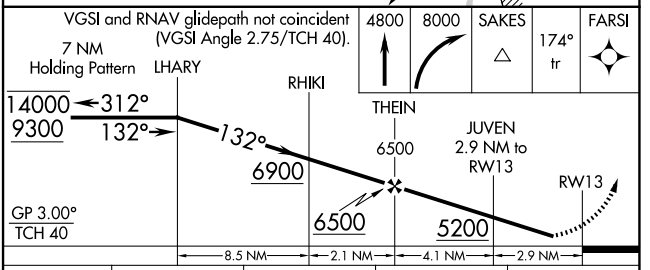
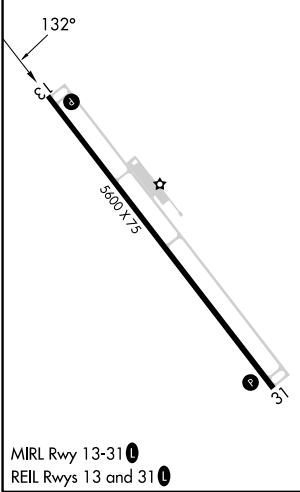
**NA** Rwy 13 helicopter visibility reduction below 3/4 SM NA. Use Moab altimeter setting; when not received, use Hanksville altimeter setting and increase LPV DA to 4603 feet; increase LNAV/VNAV DA to 4603 feet; increase all MDAs 20 feet and LNAV visibility Cat C/D 1/8 SM, and Circling visibility Cat D 1/4 SM. Baro-VNAV NA. Circling NA for Cats C and D northeast of Rwy 13-31.

MISSED APPROACH: Climb to 4800, then climbing right turn to 8000 direct SAKES and on 174° track to FARSI and hold.

CNY ASOS <b>118.525</b>	SALT LAKE CENTER <b>133.6 269.25</b>	UNICOM <b>122.8 (CTAF)</b>
----------------------------	---	-------------------------------



ELEV <b>4234</b>	TDZE <b>4234</b>
------------------	------------------



CATEGORY	A	B	C	D
LPV DA		4588-1	354 (400-1)	
LNAV/VNAV DA		4588-1	354 (400-1)	
LNAV MDA	4640-1	406 (500-1)	4640-1 1/8	406 (500-1 1/8)
CIRCLING	4800-1 566 (600-1)	4840-1 606 (700-1)	4840-1 3/4 606 (700-1 3/4)	5100-2 3/4 866 (900-2 3/4)

SW-4, 23 JAN 2025 to 20 FEB 2025

SW-4, 23 JAN 2025 to 20 FEB 2025