

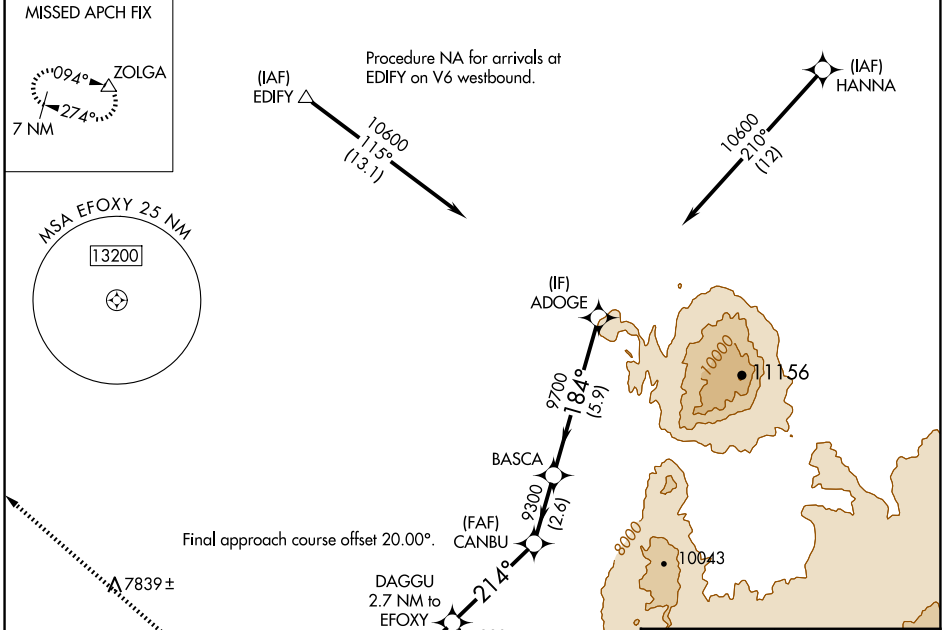
APP CRS 214°	Rwy Idg 8801
TDZE 6911	Apt Elev 7014

RNAV (GPS) RWY 23

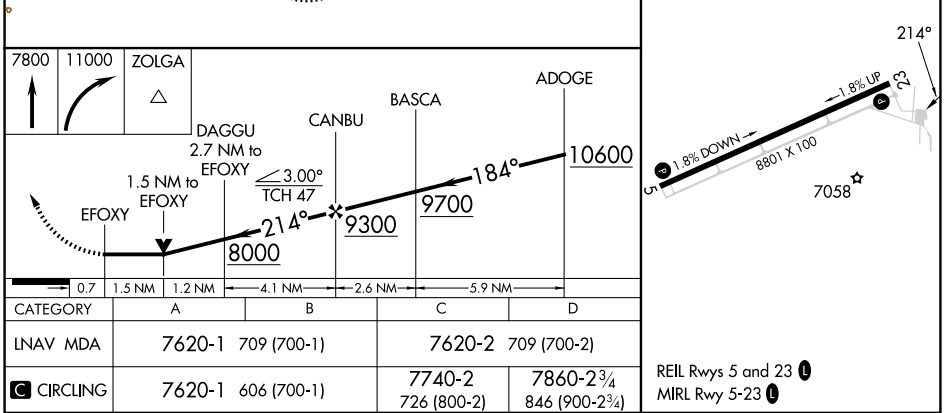
SHIVELY FLD (SAA)

RNP APCH - GPS.	MISSED APPROACH: Climb to 7800 then climbing right turn to 11000 direct ZOLGA and hold.
Rwy 23 helicopter visibility reduction below 3/4 SM NA.	

AWOS-3PT 118.175	DENVER CENTER 132.1 254.35	UNICOM 122.8 (CTAF) ①
----------------------------	--------------------------------------	---------------------------------



ELEV 7014	TDZE 6911
-----------	-----------



NW-1, 23 JAN 2025 to 20 FEB 2025

NW-1, 23 JAN 2025 to 20 FEB 2025