

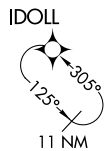
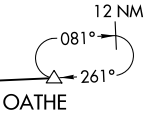
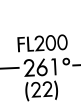
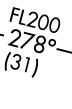
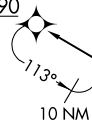
RNAV 1 - DME/DME/IRU or GPS
 RADAR required for non-GPS equipped aircraft

DENVER APP CON
 126.55 269.525
 D-ATIS ARR
 125.6 379.9
 DENVER TOWER
 128.75 273.55 (Rwy 7-25)
 132.35 239.275 (Rwys 8-26, 17L-35R)
 124.3 322.45 (Rwy 17R-35L)
 135.3 351.95 (Rwys 16L-34R, 16R-34L)



See following page
 for arrival routes

CLASH
 FL220
 FL190



- NOTE: Turbojet aircraft only.
- NOTE: Turbojet aircraft descend via MACH number until intercepting 280K. Maintain 280K until slowed by the STAR.
- NOTE: Denver Center will issue "descend via" clearance and landing direction.
- NOTE: Expect runway assignment on initial contact with Denver TRACON.
- NOTE: Landing North select Rwy 35R Transition.
- NOTE: Landing South select Rwy 17R Transition.
- NOTE: Landing East select Rwy 7 Transition.
- NOTE: Landing West select Rwy 26 Transition.

KIISS TRANSITION (KIISS.CLASH4)
OATHE TRANSITION (OATHE.CLASH4)

(CONTINUED ON FOLLOWING PAGE)

NOTE: Chart not to scale.

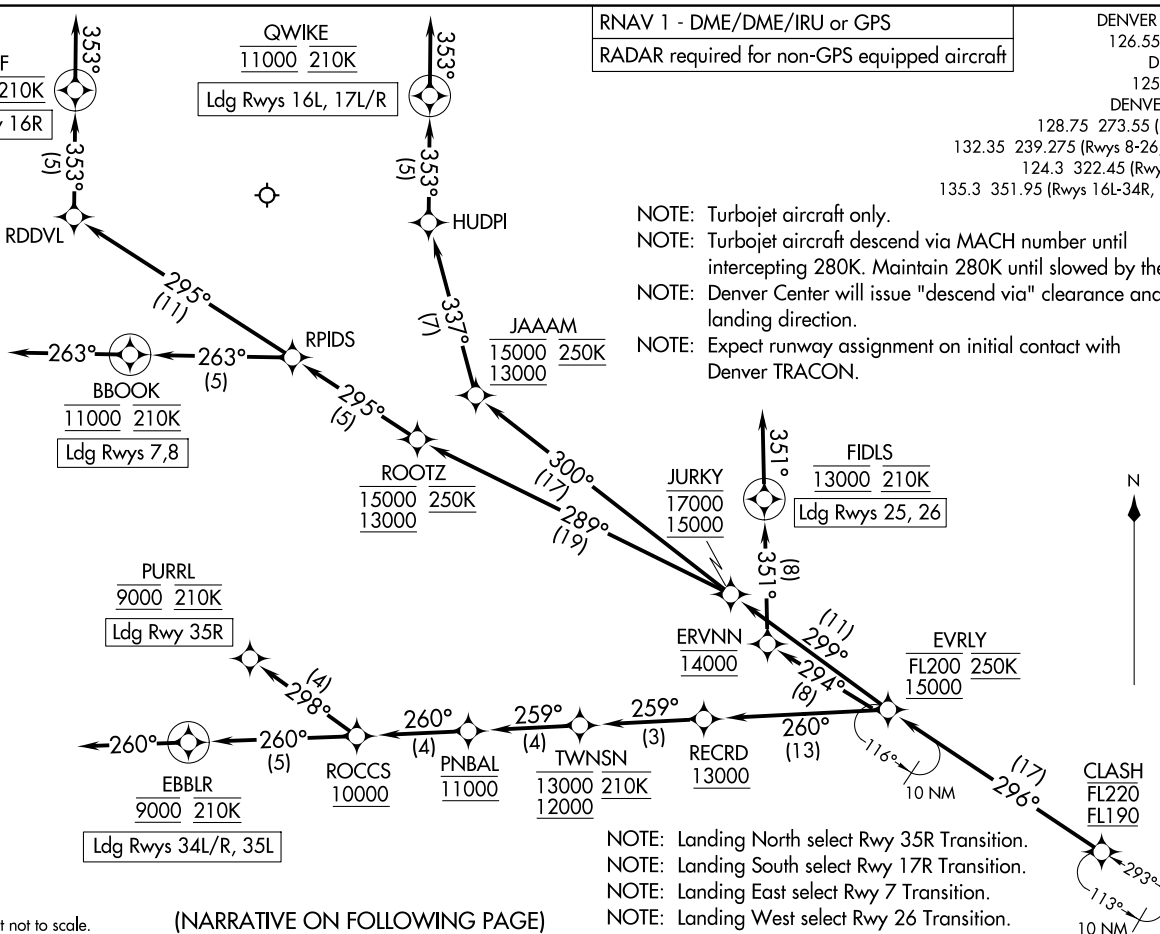
CLASH FOUR ARRIVAL (RNAV) Transition Routes
 (CLASH.CLASH4) 07OCT21
 DENVER, COLORADO
 DENVER INTL (DEN)

CLASH FOUR ARRIVAL (RNAV) Transition Routes
 AL-9077 (FAA)
 DENVER INTL (DEN)
 DENVER, COLORADO

DENVER APP CON
126.55 269.525
D-ATIS ARR
125.6 379.9
DENVER TOWER
128.75 273.55 (Rwy 7-25)
132.35 239.275 (Rwys 8-26, 17L-35R)
124.3 322.45 (Rwy 17R-35L)
135.3 351.95 (Rwys 16L-34R, 16R-34L)

RNAV 1 - DME/DME/IRU or GPS
RADAR required for non-GPS equipped aircraft

- NOTE: Turbojet aircraft only.
- NOTE: Turbojet aircraft descend via MACH number until intercepting 280K. Maintain 280K until slowed by the STAR.
- NOTE: Denver Center will issue "descend via" clearance and landing direction.
- NOTE: Expect runway assignment on initial contact with Denver TRACON.



- NOTE: Landing North select Rwy 35R Transition.
- NOTE: Landing South select Rwy 17R Transition.
- NOTE: Landing East select Rwy 7 Transition.
- NOTE: Landing West select Rwy 26 Transition.

(NARRATIVE ON FOLLOWING PAGE)

NOTE: Chart not to scale.

ARRIVAL ROUTE DESCRIPTION

From CLASH on track 296° to cross EVRLY between 15000 and FL200 and at 250K.

LANDING RUNWAYS 7, 8: From EVRLY on track 299° to cross JURKY between 15000 and 17000, then on track 289° to cross ROOTZ between 13000 and 15000 and at 250K, then on track 295° to RPIDS, then on track 263° to cross BBOOK at 11000 and at 210K, then on track 263°. Expect RADAR vectors to final approach course.

LANDING RUNWAYS 16L, 17L/R: From EVRLY on track 299° to cross JURKY between 15000 and 17000, then on track 300° to cross JAAAM between 13000 and 15000 and at 250K, then on track 337° to HUDPI, then on track 353° to cross QWIKE at 11000 and at 210K, then on track 353°. Expect RADAR vectors to final approach course.

LANDING RUNWAY 16R: From EVRLY on track 299° to cross JURKY between 15000 and 17000, then on track 289° to cross ROOTZ between 13000 and 15000 and at 250K, then on track 295° to RPIDS, then on track 295° to RDDVL, then on track 353° to cross CLFFF at 11000 and at 210K, then on track 353°. Expect RADAR vectors to final approach course.

LANDING RUNWAYS 25, 26: From EVRLY on track 294° to cross ERVNN at 14000, then on track 351° to cross FIDLS at 13000 and at 210K, then on track 351°. Expect RADAR vectors to final approach course.

LANDING RUNWAYS 34L/R, 35L: From EVRLY on track 260° to cross RECRD at or above 13000, then on track 259° to cross TWNSN between 12000 and 13000 and at 210K, then on track 259° to cross PNBAL at 11000, then on track 260° to cross ROCCS at or above 10000, then on track 260° to cross EBBLR at 9000 and at 210K, then on track 260°. Expect RADAR vectors to final approach course.

LANDING RUNWAY 35R: From EVRLY on track 260° to cross RECRD at or above 13000, then on track 259° to cross TWNSN between 12000 and 13000 and at 210K, then on track 259° to cross PNBAL at 11000, then on track 260° to cross ROCCS at or above 10000, then on track 298° to cross PURRL at 9000 and at 210K. Expect ILS or LOC RWY 35R approach.

LOST COMMUNICATIONS: In the event of lost communications prior to runway transition assignment, when DEN is landing south, execute the ILS RWY 17R, when DEN is landing north, execute the ILS RWY 35R.

SW-1, 23 JAN 2025 to 20 FEB 2025

SW-1, 23 JAN 2025 to 20 FEB 2025