

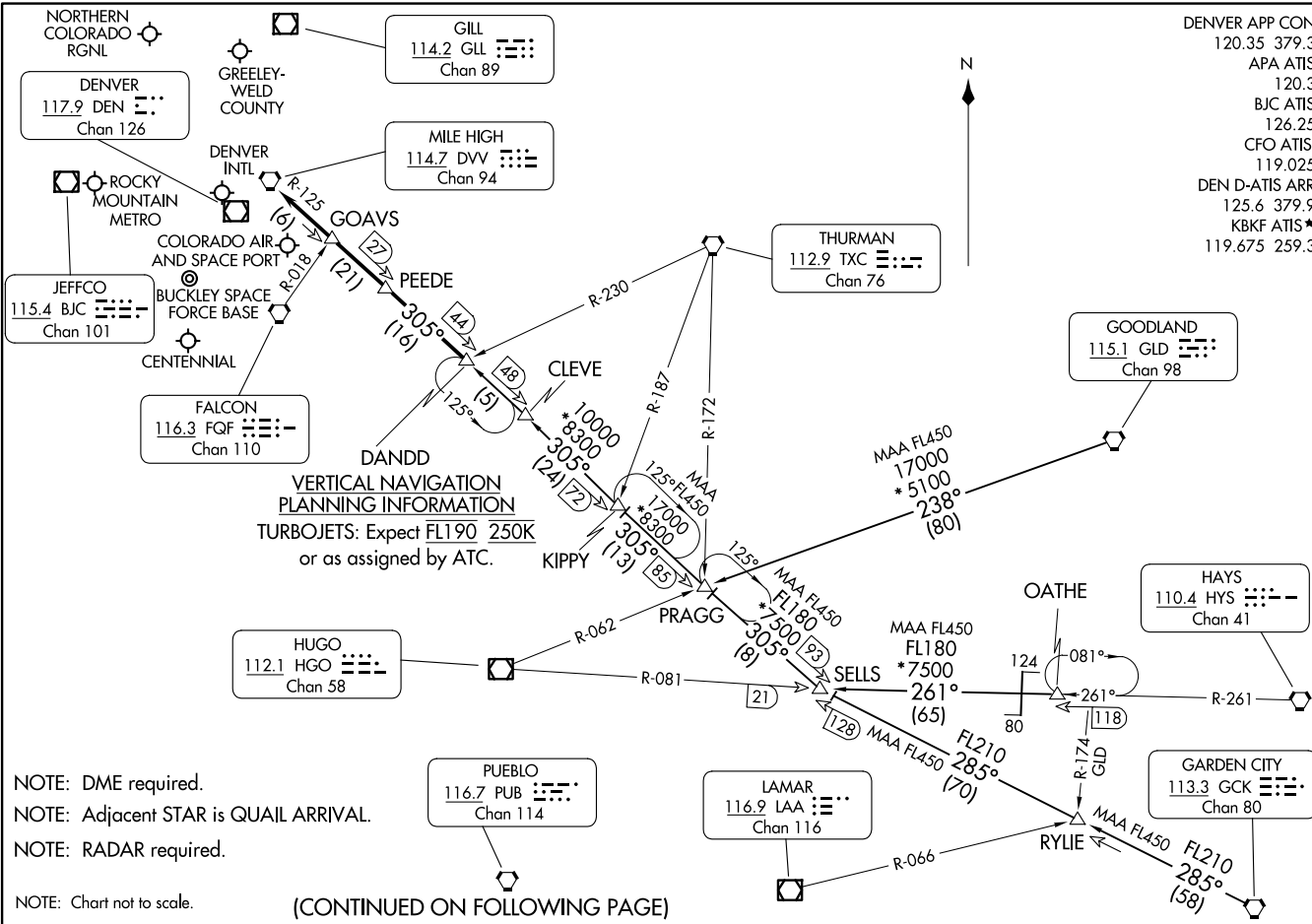
DANDD ONE ARRIVAL
(DANDD.DANDD1) 30ANZ0

(DANDD.DANDD1) 23334
DANDD ONE ARRIVAL

AL-9077 (FAA)

DENVER, COLORADO

DENVER APP CON 120.35 379.3
 APA ATIS 120.3
 BJC ATIS 126.25
 CFO ATIS 119.025
 DEN D-ATIS ARR 125.6 379.9
 KBKF ATIS* 119.675 259.3



NOTE: DME required.
 NOTE: Adjacent STAR is QUAIL ARRIVAL.
 NOTE: RADAR required.
 NOTE: Chart not to scale.

(CONTINUED ON FOLLOWING PAGE)

DENVER, COLORADO

ARRIVAL ROUTE DESCRIPTION

GARDEN CITY TRANSITION (GCK.DANDD1): From over GCK VORTAC on GCK R-285 and DVV R-125 to DANDD. Thence. . . .

GOODLAND TRANSITION (GLD.DANDD1): From over GLD VORTAC on GLD R-238 and DVV R-125 to DANDD. Thence. . . .

OATHE TRANSITION (OATHE.DANDD1): From over OATHE on HYS R-261 and HGO R-081 to SELLS, then on DVV R-125 to DANDD. Thence. . . .

. . . .from over DANDD on DVV R-125 to DVV VORTAC. Expect RADAR vectors to the final approach course at or before DVV VORTAC.

SW-1, 23 JAN 2025 to 20 FEB 2025

SW-1, 23 JAN 2025 to 20 FEB 2025