

**TOP ALTITUDE:
FL230**

D-ATIS DEP
134.025
CLNC DEL
118.75
CPDLC
DENVER DEP CON
128.25 371.95

NOTE: DME/DME/IRU or GPS required.
NOTE: RNAV 1.
NOTE: Turbojets only.
NOTE: Takeoff Rwy 8, 16L/R, 17L/R, 34L/R, 35L/35R - RADAR required for non-GPS equipped aircraft.
NOTE: Rwy 25 Departures - RADAR required.
NOTE: Accelerate to 250K or greater upon reaching 10000. If slower speed is required to meet crossing restrictions advise CLNC DEL prior to taxi.

(EEO NS8, WYN DM) 21168

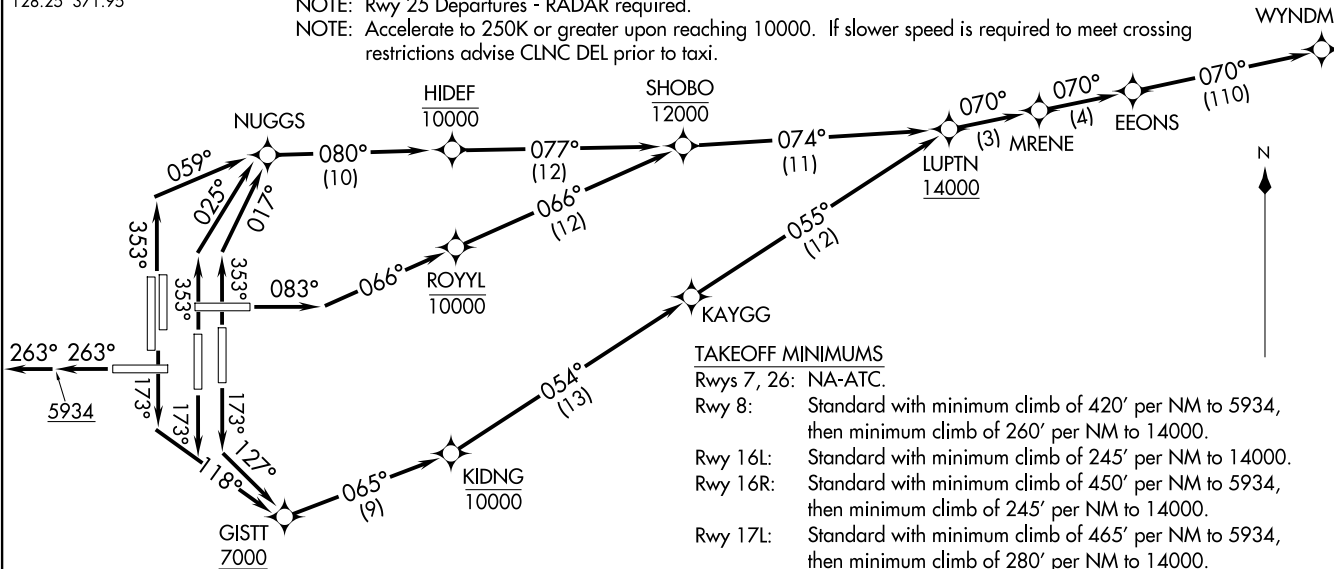
EEO NS EIGHT DEPARTURE (RNAV)

AL-9077 (FAA)

DENVER INTL (DEN)
DENVER, COLORADO

EEO NS EIGHT DEPARTURE (RNAV)
(EEO NS8, WYN DM) 17JUN21

DENVER, COLORADO
DENVER INTL (DEN)



TAKEOFF MINIMUMS
Rwys 7, 26: NA-ATC.

- Rwy 8: Standard with minimum climb of 420' per NM to 5934, then minimum climb of 260' per NM to 14000.
- Rwy 16L: Standard with minimum climb of 245' per NM to 14000.
- Rwy 16R: Standard with minimum climb of 450' per NM to 5934, then minimum climb of 245' per NM to 14000.
- Rwy 17L: Standard with minimum climb of 465' per NM to 5934, then minimum climb of 280' per NM to 14000.
- Rwy 17R: Standard with minimum climb of 465' per NM to 5934, then minimum climb of 250' per NM to 14000.
- Rwy 25: Standard with minimum climb of 400' per NM to 5934.
- Rwys 34L/R: Standard with minimum climb of 500' per NM to 5934, then minimum climb of 230' per NM to 14000.
- Rwy 35L: Standard with minimum climb of 320' per NM to 8400.
- Rwy 35R: Standard with minimum climb of 300' per NM to 5934, then minimum climb of 230' per NM to 14000.

NOTE: Chart not to scale.

(NARRATIVE ON FOLLOWING PAGE)



DEPARTURE ROUTE DESCRIPTION

TAKEOFF RUNWAY 8: Climb on heading 083° to intercept course 066° to cross ROYYL at/below 10000, then on track 066° to cross SHOBO at/below 12000, then on track 074° to cross LUPTN at/above 14000, thence

TAKEOFF RUNWAYS 16L/R, 17R: Climb on heading 173° to intercept course 118° to cross GISTT at/above 7000, then on track 065° to cross KIDNG at/below 10000, then on track 054° to KAYGG, then on track 055° to cross LUPTN at/above 14000, thence

TAKEOFF RUNWAY 17L: Climb on heading 173° to intercept course 127° to cross GISTT at/above 7000, then on track 065° to cross KIDNG at/below 10000, then on track 054° to KAYGG, then on track 055° to cross LUPTN at/above 14000, thence

TAKEOFF RUNWAY 25: Climb on heading 263° to 5934, then continue climb on heading 263° or as assigned by ATC for RADAR vectors to EEONS, thence

TAKEOFF RUNWAYS 34L/R: Climb on heading 353° to intercept course 059° to NUGGS, then on track 080° to cross HIDEF at/below 10000, then on track 077° to cross SHOBO at/below 12000, then on track 074° to cross LUPTN at/above 14000, thence

TAKEOFF RUNWAY 35L: Climb on heading 353° to intercept course 025° to NUGGS, then on track 080° to cross HIDEF at/below 10000, then on track 077° to cross SHOBO at/below 12000, then on track 074° to cross LUPTN at/above 14000, thence

TAKEOFF RUNWAY 35R: Climb on heading 353° to intercept course 017° to NUGGS, then on track 080° to cross HIDEF at/below 10000, then on track 077° to cross SHOBO at/below 12000, then on track 074° to cross LUPTN at/above 14000, thence

. . . . on depicted route to WYNDM, maintain FL230 or lower filed altitude. Expect higher filed altitude 10 minutes after departure.

SW-1, 23 JAN 2025 to 20 FEB 2025

SW-1, 23 JAN 2025 to 20 FEB 2025